

Product datasheet

Anti-PBX1/PRL antibody ab97994

★★★★★ 2 Abreviews 4 References 2 Images

Overview

Product name	Anti-PBX1/PRL antibody
Description	Rabbit polyclonal to PBX1/PRL
Host species	Rabbit
Tested applications	Suitable for: ICC/IF, WB
Species reactivity	Reacts with: Human Predicted to work with: Mouse, Rat, Chicken, Zebrafish
Immunogen	Synthetic peptide corresponding to Human PBX1/PRL aa 400 to the C-terminus (C terminal) conjugated to keyhole limpet haemocyanin. (Peptide available as ab112482)
Positive control	This antibody gave a positive signal in the following whole cell lysates: HeLa; Jurkat; HL60; K562; MOLT4.
General notes	Previously labelled as PBX1.

Reproducibility is key to advancing scientific discovery and accelerating scientists' next breakthrough.

Abcam is leading the way with our range of recombinant antibodies, knockout-validated antibodies and knockout cell lines, all of which support improved reproducibility.

We are also planning to innovate the way in which we present recommended applications and species on our product datasheets, so that only applications & species that have been tested in our own labs, our suppliers or by selected trusted collaborators are covered by our Abpromise™ guarantee.

In preparation for this, we have started to update the applications & species that this product is Abpromise guaranteed for.

We are also updating the applications & species that this product has been “predicted to work with,” however this information is not covered by our Abpromise guarantee.

Applications & species from publications and Abreviews that have not been tested in our own labs or in those of our suppliers are not covered by the Abpromise guarantee.

Please check that this product meets your needs before purchasing. If you have any questions, special requirements or concerns, please send us an inquiry and/or contact our Support team ahead of purchase. Recommended alternatives for this product can be found below, as well as customer reviews and Q&As.

Properties

Form	Liquid
Storage instructions	Shipped at 4°C. Store at +4°C short term (1-2 weeks). Upon delivery aliquot. Store at -20°C or -80°C. Avoid freeze / thaw cycle.
Storage buffer	pH: 7.40 Preservative: 0.02% Sodium azide Constituent: PBS Batches of this product that have a concentration < 1mg/ml may have BSA added as a stabilising agent. If you would like information about the formulation of a specific lot, please contact our scientific support team who will be happy to help.
Purity	Immunogen affinity purified
Clonality	Polyclonal
Isotype	IgG

Applications

Our [Abpromise guarantee](#) covers the use of **ab97994** in the following tested applications.

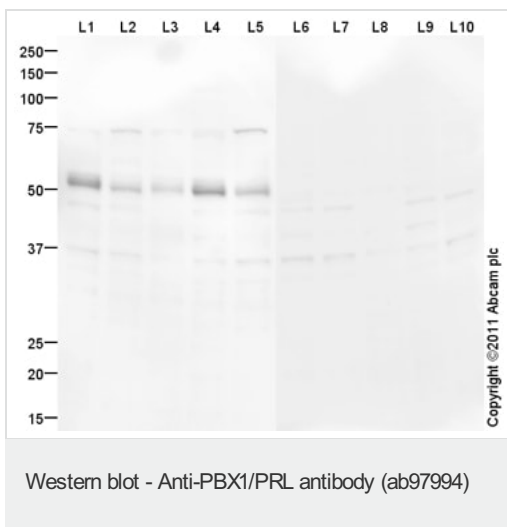
The application notes include recommended starting dilutions; optimal dilutions/concentrations should be determined by the end user.

Application	Abreviews	Notes
ICC/IF	★★★★★	Use a concentration of 5 µg/ml.
WB		Use a concentration of 1 µg/ml. Detects a band of approximately 50 kDa (predicted molecular weight: 47 kDa).

Target

Function	Binds the sequence 5'-ATCAATCAA-3'. Acts as a transcriptional activator of PF4 in complex with MEIS1. Converted into a potent transcriptional activator by the (1;19) translocation. May have a role in steroidogenesis and, subsequently, sexual development and differentiation.
Tissue specificity	Expressed in all tissues except in cells of the B and T lineage.
Involvement in disease	Note=A chromosomal aberration involving PBX1 is a cause of pre-B-cell acute lymphoblastic leukemia (B-ALL). Translocation t(1;19)(q23;p13.3) with TCF3. E2A-PBX1 transforms cells by constitutively activating transcription of genes regulated by PBX1 or by other members of the PBX protein family.
Sequence similarities	Belongs to the TALE/PBX homeobox family. Contains 1 homeobox DNA-binding domain.
Cellular localization	Nucleus.

Images



All lanes : Anti-PBX1/PRL antibody (ab97994) at 1 µg/ml

Lane 1 : HeLa (Human epithelial carcinoma cell line) Whole Cell Lysate

Lane 2 : Jurkat (Human T cell lymphoblast-like cell line) Whole Cell Lysate

Lane 3 : HL60 (Human promyelocytic leukemia cell line) Whole Cell Lysate

Lane 4 : K562 (Human erythromyeloblastoid leukemia cell line) Whole Cell Lysate

Lane 5 : MOLT4 (Human acute lymphoblastic leukemia cell line) Whole Cell Lysate

Lane 6 : HeLa (Human epithelial carcinoma cell line) Whole Cell Lysate with immunizing peptide at 1 µg/ml

Lane 7 : Jurkat (Human T cell lymphoblast-like cell line) Whole Cell Lysate with immunizing peptide at 1 µg/ml

Lane 8 : HL60 (Human promyelocytic leukemia cell line) Whole Cell Lysate with immunizing peptide at 1 µg/ml

Lane 9 : K562 (Human erythromyeloblastoid leukemia cell line) Whole Cell Lysate with immunizing peptide at 1 µg/ml

Lane 10 : MOLT4 (Human acute lymphoblastic leukemia cell line) Whole Cell Lysate with immunizing peptide at 1 µg/ml

Lysates/proteins at 10 µg per lane.

Secondary

All lanes : Goat Anti-Rabbit IgG H&L (HRP) preadsorbed ([ab97080](#)) at 1/5000 dilution

Developed using the ECL technique.

Performed under reducing conditions.

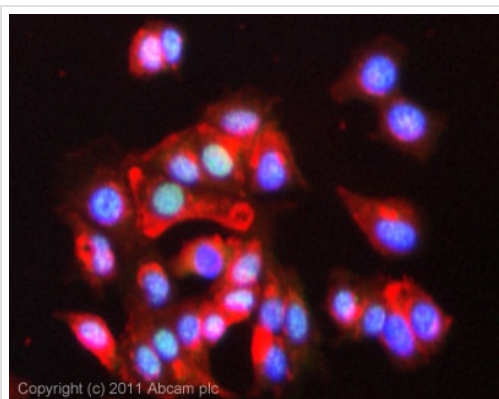
Predicted band size: 47 kDa

Observed band size: 50 kDa

[why is the actual band size different from the predicted?](#)

Additional bands at: 37 kDa, 75 kDa. We are unsure as to the identity of these extra bands.

Exposure time: 12 minutes



Immunocytochemistry/ Immunofluorescence - Anti-PBX1/PRL antibody (ab97994)

ICC/IF image of ab97994 stained MCF7 cells. The cells were 4% PFA fixed (10 min) and then incubated in 1%BSA / 10% normal goat serum / 0.3M glycine in 0.1% PBS-Tween for 1h to permeabilise the cells and block non-specific protein-protein interactions. The cells were then incubated with the antibody (ab97994, 5µg/ml) overnight at +4°C. The secondary antibody (green) was ab96899, DyLight® 488 goat anti-rabbit IgG (H+L) used at a 1/250 dilution for 1h. Alexa Fluor® 594 WGA was used to label plasma membranes (red) at a 1/200 dilution for 1h. DAPI was used to stain the cell nuclei (blue) at a concentration of 1.43µM. This antibody also gave a positive result in 100% methanol fixed (5 min) MCF7 and Hek392 cells at 5µg/ml.

Please note: All products are "FOR RESEARCH USE ONLY. NOT FOR USE IN DIAGNOSTIC PROCEDURES"

Our Abpromise to you: Quality guaranteed and expert technical support

- Replacement or refund for products not performing as stated on the datasheet
- Valid for 12 months from date of delivery
- Response to your inquiry within 24 hours
- We provide support in Chinese, English, French, German, Japanese and Spanish
- Extensive multi-media technical resources to help you
- We investigate all quality concerns to ensure our products perform to the highest standards

If the product does not perform as described on this datasheet, we will offer a refund or replacement. For full details of the Abpromise, please visit <https://www.abcam.com/abpromise> or contact our technical team.

Terms and conditions

- Guarantee only valid for products bought direct from Abcam or one of our authorized distributors