


## Product datasheet

# Anti-PCB antibody - C-terminal ab229266

3 Images

### Overview

---

<b>Product name</b>	Anti-PCB antibody - C-terminal
<b>Description</b>	Rabbit polyclonal to PCB - C-terminal
<b>Host species</b>	Rabbit
<b>Tested applications</b>	<b>Suitable for:</b> ICC/IF, IHC-P, WB
<b>Species reactivity</b>	<b>Reacts with:</b> Mouse, Human <b>Predicted to work with:</b> Rat, Cow, Pig, Rhesus monkey 
<b>Immunogen</b>	Recombinant fragment within Human PCB (C terminal). The exact sequence is proprietary. Database link: <a href="#">P11498</a>
<b>Positive control</b>	WB: HEK-293T, A431 and HeLa whole cell lysate; mouse liver tissue lysate. IHC-P: Mouse liver tissue. ICC/IF: HeLa cells.
<b>General notes</b>	<p>Reproducibility is key to advancing scientific discovery and accelerating scientists' next breakthrough.</p> <p>Abcam is leading the way with our range of recombinant antibodies, knockout-validated antibodies and knockout cell lines, all of which support improved reproducibility.</p> <p>We are also planning to innovate the way in which we present recommended applications and species on our product datasheets, so that only applications &amp; species that have been tested in our own labs, our suppliers or by selected trusted collaborators are covered by our Abpromise™ guarantee.</p> <p>In preparation for this, we have started to update the applications &amp; species that this product is Abpromise guaranteed for.</p> <p>We are also updating the applications &amp; species that this product has been “predicted to work with,” however this information is not covered by our Abpromise guarantee.</p> <p>Applications &amp; species from publications and Abreviews that have not been tested in our own labs or in those of our suppliers are not covered by the Abpromise guarantee.</p> <p>Please check that this product meets your needs before purchasing. If you have any questions, special requirements or concerns, please send us an inquiry and/or contact our Support team ahead of purchase. Recommended alternatives for this product can be found below, as well as customer reviews and Q&amp;As.</p>

### Properties

---

<b>Form</b>	Liquid
<b>Storage instructions</b>	Shipped at 4°C. Store at +4°C short term (1-2 weeks). Upon delivery aliquot. Store at -20°C long term. Avoid freeze / thaw cycle.
<b>Storage buffer</b>	pH: 7.00 Preservative: 0.025% Proclin 300 Constituents: 79% PBS, 20% Glycerol (glycerin, glycerine)
<b>Purity</b>	Immunogen affinity purified
<b>Clonality</b>	Polyclonal
<b>Isotype</b>	IgG

## Applications

Our [Abpromise guarantee](#) covers the use of **ab229266** in the following tested applications.

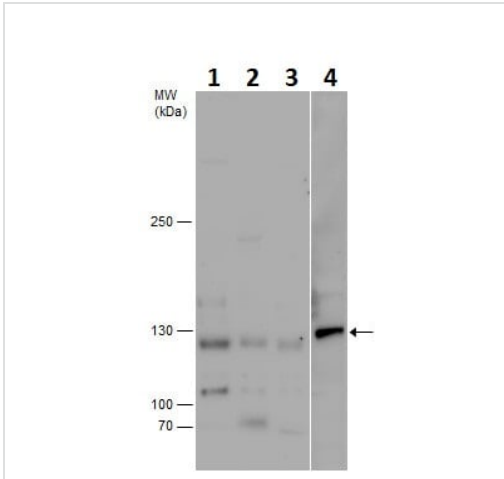
The application notes include recommended starting dilutions; optimal dilutions/concentrations should be determined by the end user.

Application	Abreviews	Notes
ICC/IF		1/100 - 1/1000.
IHC-P		1/100 - 1/1000.
WB		1/500 - 1/3000.

## Target

<b>Function</b>	Pyruvate carboxylase catalyzes a 2-step reaction, involving the ATP-dependent carboxylation of the covalently attached biotin in the first step and the transfer of the carboxyl group to pyruvate in the second. Catalyzes in a tissue specific manner, the initial reactions of glucose (liver, kidney) and lipid (adipose tissue, liver, brain) synthesis from pyruvate.
<b>Pathway</b>	Carbohydrate biosynthesis; gluconeogenesis.
<b>Involvement in disease</b>	Defects in PC are the cause of pyruvate carboxylase deficiency (PC deficiency) [MIM:266150]. PC deficiency leads to lactic acidosis, mental retardation and death. It occurs in three forms: mild or type A, severe neonatal or type B, and a very mild lacticacidemia.
<b>Sequence similarities</b>	Contains 1 ATP-grasp domain. Contains 1 biotin carboxylation domain. Contains 1 biotinyl-binding domain. Contains 1 carboxyltransferase domain.
<b>Cellular localization</b>	Mitochondrion matrix.

## Images



Western blot - Anti-PCB antibody - C-terminal (ab229266)

**All lanes** : Anti-PCB antibody - C-terminal (ab229266) at 1/1000 dilution

**Lane 1** : HEK-293T (human epithelial cell line from embryonic kidney transformed with large T antigen) whole cell lysate

**Lane 2** : A431 (human epidermoid carcinoma cell line) whole cell lysate

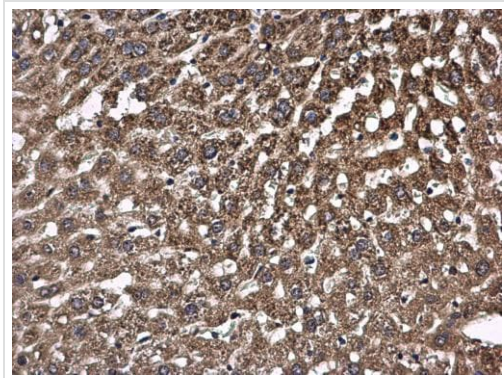
**Lane 3** : HeLa (human epithelial cell line from cervix adenocarcinoma) whole cell lysate

**Lane 4** : Mouse liver tissue lysate

Lysates/proteins at 30 µg per lane.

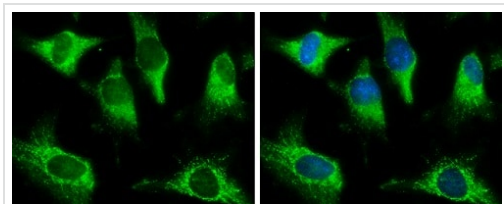
Developed using the ECL technique.

#### 5% SDS-PAGE



Immunohistochemistry (Formalin/PFA-fixed paraffin-embedded sections) - Anti-PCB antibody - C-terminal (ab229266)

Paraffin-embedded mouse liver tissue stained for PCB using ab229266 at 1/500 dilution in immunohistochemical analysis.



Immunocytochemistry/ Immunofluorescence - Anti-PCB antibody - C-terminal (ab229266)

HeLa (human epithelial cell line from cervix adenocarcinoma) cells stained for PCB using ab229266 (green) at 1/500 dilution in ICC/IF. Cells were fixed in ice-cold methanol for 5 minutes. Blue: Hoechst 33342 staining.

**Please note:** All products are "FOR RESEARCH USE ONLY. NOT FOR USE IN DIAGNOSTIC PROCEDURES"

### **Our Abpromise to you: Quality guaranteed and expert technical support**

---

- Replacement or refund for products not performing as stated on the datasheet
- Valid for 12 months from date of delivery
- Response to your inquiry within 24 hours
  
- We provide support in Chinese, English, French, German, Japanese and Spanish
- Extensive multi-media technical resources to help you
- We investigate all quality concerns to ensure our products perform to the highest standards

If the product does not perform as described on this datasheet, we will offer a refund or replacement. For full details of the Abpromise, please visit <https://www.abcam.com/abpromise> or contact our technical team.

### **Terms and conditions**

---

- Guarantee only valid for products bought direct from Abcam or one of our authorized distributors