

Product datasheet

Anti-PCDH10 antibody ab230408

2 Images

Overview

<b>Product name</b>	Anti-PCDH10 antibody
<b>Description</b>	Rabbit polyclonal to PCDH10
<b>Host species</b>	Rabbit
<b>Tested applications</b>	<b>Suitable for:</b> IHC-P
<b>Species reactivity</b>	<b>Reacts with:</b> Human
<b>Immunogen</b>	Recombinant fragment corresponding to Human PCDH10 aa 515-715.

Sequence:

YVSINSENGLYALRSFDYEQLKDFSQVEARDAGSP  
 QALAGNATVNILI  
 VDQNDNAPAVAPLPGRNGTPAREVLPRSAEPGYLLT  
 RVAAVDADDGENA  
 RLTYSMRGNEMNLFMRMDWRTGELRTARRVPAKRDPQ  
 RPYELVIEVRDHG  
 QPPLSSTATLVVQLVDGAVEPQGGGGSGGGGSGEH  
 QRPSRSGGGETSLDL T

Database link: [Q9P2E7](#)

 [Run BLAST with](#)

 [Run BLAST with](#)

<b>Positive control</b>	IHC-P: Human brain and glioma tissue.
-------------------------	---------------------------------------

Properties

<b>Form</b>	Liquid
<b>Storage instructions</b>	Shipped at 4°C. Store at +4°C short term (1-2 weeks). Upon delivery aliquot. Store at -20°C long term. Avoid freeze / thaw cycle.
<b>Storage buffer</b>	pH: 7.3 Preservative: 0.02% Sodium azide Constituents: PBS, 50% Glycerol
<b>Purity</b>	Immunogen affinity purified
<b>Clonality</b>	Polyclonal
<b>Isotype</b>	IgG

## Applications

---

Our [Abpromise guarantee](#) covers the use of **ab230408** in the following tested applications.

The application notes include recommended starting dilutions; optimal dilutions/concentrations should be determined by the end user.

Application	Abreviews	Notes
IHC-P		1/20 - 1/200.

---

## Target

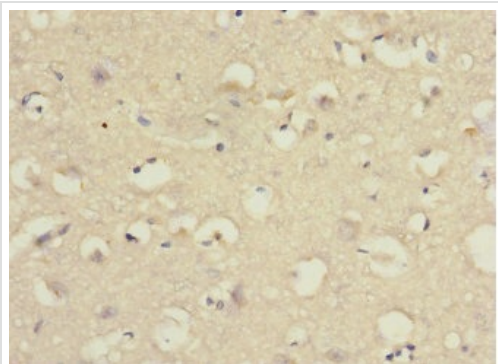
---

<b>Function</b>	Potential calcium-dependent cell-adhesion protein.
<b>Tissue specificity</b>	Moderately expressed in all regions of the brain examined, as well as in testis and ovary, and low expression in all other tissues tested.
<b>Sequence similarities</b>	Contains 6 cadherin domains.
<b>Cellular localization</b>	Cell membrane.

---

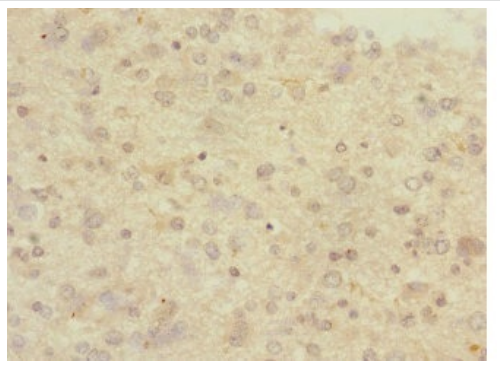
## Images

---



Paraffin-embedded human brain tissue stained for PCDH10 using ab230408 at 1/100 dilution in immunohistochemical analysis.

Immunohistochemistry (Formalin/PFA-fixed paraffin-embedded sections) - Anti-PCDH10 antibody (ab230408)



Paraffin-embedded human glioma tissue stained for PCDH10 using ab230408 at 1/100 dilution in immunohistochemical analysis.

Immunohistochemistry (Formalin/PFA-fixed paraffin-embedded sections) - Anti-PCDH10 antibody (ab230408)

**Please note:** All products are "FOR RESEARCH USE ONLY. NOT FOR USE IN DIAGNOSTIC PROCEDURES"

### Our Abpromise to you: Quality guaranteed and expert technical support

---

- Replacement or refund for products not performing as stated on the datasheet
- Valid for 12 months from date of delivery
- Response to your inquiry within 24 hours
- We provide support in Chinese, English, French, German, Japanese and Spanish
- Extensive multi-media technical resources to help you
- We investigate all quality concerns to ensure our products perform to the highest standards

If the product does not perform as described on this datasheet, we will offer a refund or replacement. For full details of the Abpromise, please visit <https://www.abcam.com/abpromise> or contact our technical team.

### Terms and conditions

---

- Guarantee only valid for products bought direct from Abcam or one of our authorized distributors