

Product datasheet

Anti-PCIF1 antibody [EPR24319-21] ab271081

Recombinant RabMAb

5 Images

Overview

Product name	Anti-PCIF1 antibody [EPR24319-21]
Description	Rabbit monoclonal [EPR24319-21] to PCIF1
Host species	Rabbit
Tested applications	Suitable for: IP, WB Unsuitable for: Flow Cyt, ICC or IHC-P
Species reactivity	Reacts with: Rat, Human
Immunogen	Recombinant fragment. This information is proprietary to Abcam and/or its suppliers.
Positive control	WB: 293T, MCF-7, HeLa, Jurkat, Human testis, Rat liver, Rat testis lysates. IP: MCF-7 cells.
General notes	This product is a recombinant monoclonal antibody, which offers several advantages including: <ul style="list-style-type: none"> - High batch-to-batch consistency and reproducibility - Improved sensitivity and specificity - Long-term security of supply - Animal-free production For more information see here . Our RabMAb [®] technology is a patented hybridoma-based technology for making rabbit monoclonal antibodies. For details on our patents, please refer to RabMAb[®] patents .

Properties

Form	Liquid
Storage instructions	Shipped at 4°C. Store at +4°C short term (1-2 weeks). Upon delivery aliquot. Store at -20°C. Avoid freeze / thaw cycle.
Storage buffer	pH: 7.2 Preservative: 0.01% Sodium azide Constituents: 59.94% PBS, 40% Glycerol (glycerin, glycerine), 0.05% BSA
Purity	Protein A purified
Clonality	Monoclonal
Clone number	EPR24319-21
Isotype	IgG

Applications

The Abpromise guarantee

Our [Abpromise guarantee](#) covers the use of ab271081 in the following tested applications.

The application notes include recommended starting dilutions; optimal dilutions/concentrations should be determined by the end user.

Application	Abreviews	Notes
IP		1/30.
WB		1/1000. Predicted molecular weight: 81 kDa.

Application notes

Is unsuitable for Flow Cyt, ICC or IHC-P.

Target

Function

May play a role in transcription elongation or in coupling transcription to pre-mRNA processing through its association with the phosphorylated C-terminal domain (CTD) of RNAPII largest subunit.

Tissue specificity

Ubiquitous.

Sequence similarities

Contains 1 WW domain.

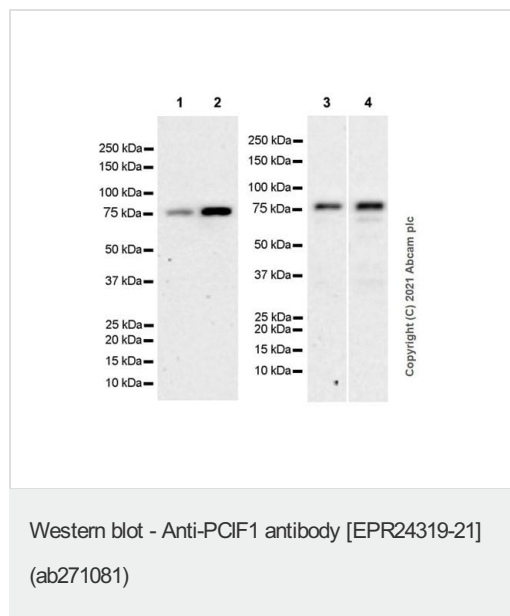
Domain

The WW domain is sufficient for direct and specific interaction with the phosphorylated CTD of RNAPII largest subunit.

Cellular localization

Nucleus.

Images



All lanes : Anti-PCIF1 antibody [EPR24319-21] (ab271081) at 1/1000 dilution

Lane 1 : 293T (human embryonic kidney epithelial cell) whole cell lysate

Lane 2 : MCF-7 (human breast adenocarcinoma epithelial cell) whole cell lysate

Lane 3 : HeLa (human cervix adenocarcinoma epithelial cell) whole cell lysate

Lane 4 : Jurkat (human T cell leukemia T lymphocyte) whole cell lysate

Lysates/proteins at 20 µg per lane.

Secondary

All lanes : Goat Anti-Rabbit IgG H&L (HRP) (ab97051) at 1/100000 dilution (Goat Anti-Rabbit IgG, (H+L), Peroxidase conjugated)

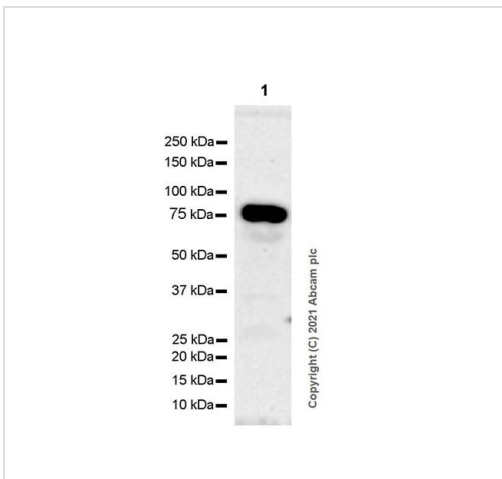
Predicted band size: 81 kDa

Observed band size: 85 kDa

Blocking and diluting buffer and concentration: 5% NFDM/TBST

This blot (lane 3 and 4) was developed using a higher sensitivity ECL substrate.

Exposure time: 3 minutes.



Western blot - Anti-PCIF1 antibody [EPR24319-21]
(ab271081)

Anti-PCIF1 antibody [EPR24319-21] (ab271081) at 1/1000 dilution
+ Human testis tissue lysate at 20 µg

Secondary

Goat Anti-Rabbit IgG (HRP) with minimal cross-reactivity with human IgG at 1/2000 dilution

Predicted band size: 81 kDa

Observed band size: 85 kDa

Blocking and diluting buffer and concentration: 5% NFDM/TBST.

Exposure time: 3 minutes.



Western blot - Anti-PCIF1 antibody [EPR24319-21]
(ab271081)

All lanes : Anti-PCIF1 antibody [EPR24319-21] (ab271081) at 1/1000 dilution

Lane 1 : Rat liver tissue lysate

Lane 2 : Rat testis tissue lysate

Lysates/proteins at 20 µg per lane.

Secondary

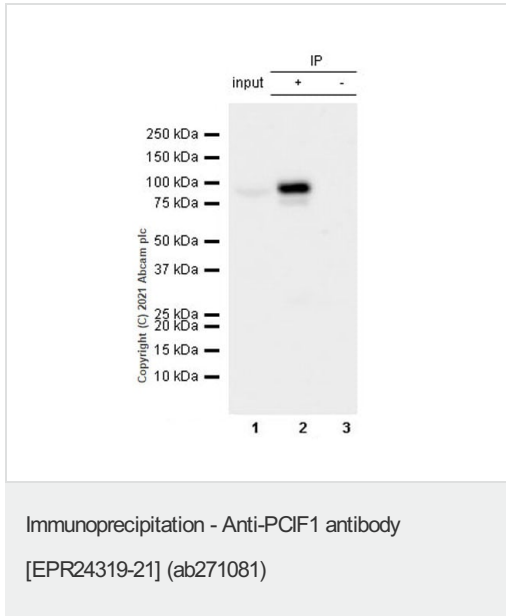
All lanes : Goat Anti-Rabbit IgG H&L (HRP) (ab97051) at 1/100000 dilution (Goat Anti-Rabbit IgG, (H+L), Peroxidase conjugated)

Predicted band size: 81 kDa

Observed band size: 85 kDa

Blocking and diluting buffer and concentration: 5% NFDm/TBST.

Exposure time: 3 minutes.



PCIF1 was immunoprecipitated from 0.35 mg MCF-7 (human breast adenocarcinoma epithelial cell) whole cell lysate 10 ug with ab271081 at 1/30 dilution (2ug in 0.35mg lysates). Western blot was performed on the immunoprecipitate using ab271081 at 1/1000 dilution. VeriBlot for IP secondary antibody(HRP) (ab131366) was used at 1/5000 dilution.

Lane 1: MCF-7 (human breast adenocarcinoma epithelial cell) whole cell lysate 10 ug

Lane 2: ab271081 IP in MCF-7 whole cell lysate

Lane 3: Rabbit monoclonal IgG (ab172730) instead of ab271081 in MCF-7 whole cell lysate

Blocking and dilution buffer and concentration: 5% NFDm/TBST.

Exposure time: 24 seconds

This blot was developed using a higher sensitivity ECL substrate.

Why choose a recombinant antibody?

- Research with confidence**
Consistent and reproducible results
- Long-term and scalable supply**
Recombinant technology
- Success from the first experiment**
Confirmed specificity
- Ethical standards compliant**
Animal-free production

Anti-PCIF1 antibody [EPR24319-21] (ab271081)

Please note: All products are "FOR RESEARCH USE ONLY. NOT FOR USE IN DIAGNOSTIC PROCEDURES"

Our Abpromise to you: Quality guaranteed and expert technical support

- Replacement or refund for products not performing as stated on the datasheet
- Valid for 12 months from date of delivery
- Response to your inquiry within 24 hours

- We provide support in Chinese, English, French, German, Japanese and Spanish
- Extensive multi-media technical resources to help you
- We investigate all quality concerns to ensure our products perform to the highest standards

If the product does not perform as described on this datasheet, we will offer a refund or replacement. For full details of the Abpromise, please visit <https://www.abcam.com/abpromise> or contact our technical team.

Terms and conditions

- Guarantee only valid for products bought direct from Abcam or one of our authorized distributors