


Product datasheet

Anti-PCM1 antibody ab72443

★★★★☆ 2 Abreviews 6 References 2 Images

Overview

Product name	Anti-PCM1 antibody
Description	Rabbit polyclonal to PCM1
Host species	Rabbit
Tested applications	Suitable for: WB, IP
Species reactivity	Reacts with: Mouse, Human Predicted to work with: Rat, Rabbit, Horse, Guinea pig, Cow, Dog, Pig, Chimpanzee, Ferret, Rhesus monkey, Orangutan 
Immunogen	A synthetic peptide corresponding to a region between residues 1925 and 1975 of human PCM1.
Positive control	HeLa whole cell lysate; 293T and mouse NIH3T3 cell lysates
General notes	<p>Reproducibility is key to advancing scientific discovery and accelerating scientists' next breakthrough.</p> <p>Abcam is leading the way with our range of recombinant antibodies, knockout-validated antibodies and knockout cell lines, all of which support improved reproducibility.</p> <p>We are also planning to innovate the way in which we present recommended applications and species on our product datasheets, so that only applications & species that have been tested in our own labs, our suppliers or by selected trusted collaborators are covered by our Abpromise™ guarantee.</p> <p>In preparation for this, we have started to update the applications & species that this product is Abpromise guaranteed for.</p> <p>We are also updating the applications & species that this product has been “predicted to work with,” however this information is not covered by our Abpromise guarantee.</p> <p>Applications & species from publications and Abreviews that have not been tested in our own labs or in those of our suppliers are not covered by the Abpromise guarantee.</p> <p>Please check that this product meets your needs before purchasing. If you have any questions, special requirements or concerns, please send us an inquiry and/or contact our Support team ahead of purchase. Recommended alternatives for this product can be found below, as well as customer reviews and Q&As.</p>

Properties

Form	Liquid
-------------	--------

Storage instructions	Shipped at 4°C. Upon delivery aliquot and store at -20°C. Avoid freeze / thaw cycles.
Storage buffer	pH: 6.8 Preservative: 0.09% Sodium azide Constituents: 0.1% BSA, Tris buffered saline
Purity	Immunogen affinity purified
Clonality	Polyclonal
Isotype	IgG

Applications

Our [Abpromise guarantee](#) covers the use of **ab72443** in the following tested applications.

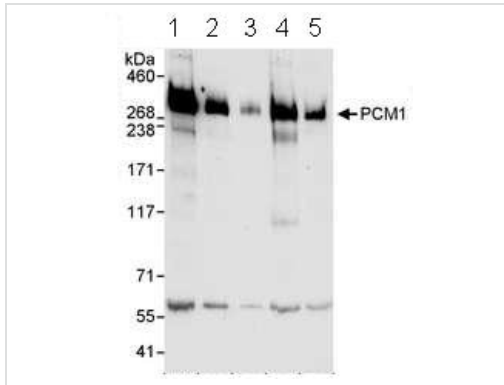
The application notes include recommended starting dilutions; optimal dilutions/concentrations should be determined by the end user.

Application	Abreviews	Notes
WB		1/2000 - 1/10000. Detects a band of approximately 270 kDa.
IP		Use a concentration of 2 - 5 µg/ml.

Target

Function	Required for centrosome assembly and function. Essential for the correct localization of several centrosomal proteins including CEP250, CETN3, PCNT and NEK2. Required to anchor microtubules to the centrosome. Involved in the biogenesis of cilia.
Tissue specificity	Expressed in blood, bone marrow, breast, lymph node, ovary and thyroid.
Involvement in disease	Defects in PCM1 are a cause of thyroid papillary carcinoma (TPC) [MIM:188550]. TPC is a common tumor of the thyroid that typically arises as an irregular, solid or cystic mass from otherwise normal thyroid tissue. Papillary carcinomas are malignant neoplasm characterized by the formation of numerous, irregular, finger-like projections of fibrous stroma that is covered with a surface layer of neoplastic epithelial cells. Note=A chromosomal aberration involving PCM1 is found in thyroid papillary carcinomas. Translocation t(8;10)(p21.3;q11.2) with RET links the protein kinase domain of RET to the major portion of PCM1. Note=A chromosomal aberration involving PCM1 is found in a variety of hematological malignancies including atypical chronic myeloid leukemia (atypical CML) and T-cell lymphoma. Translocation t(8;9)(p22;p24) with JAK2 links the protein kinase domain of JAK2 to the major portion of PCM1.
Sequence similarities	Belongs to the PCM1 family.
Post-translational modifications	Phosphorylated upon DNA damage, probably by ATM or ATR.
Cellular localization	Cytoplasm > cytoskeleton. Cytoplasm > cytoskeleton > centrosome. Cytoplasmic granule. Localizes to cytoplasmic granules which are enriched around the centrosome. This centrosomal enrichment requires microtubules and dynein. The majority of the protein dissociates from the centrosome during metaphase and subsequently localizes to the cleavage site in telophase.

Images



Western blot - Anti-PCM1 antibody (ab72443)

All lanes : Anti-PCM1 antibody (ab72443) at 0.04 µg/ml

Lane 1 : HeLa whole cell lysate at 50 µg

Lane 2 : HeLa whole cell lysate at 15 µg

Lane 3 : HeLa whole cell lysate at 5 µg

Lane 4 : 293T cell lysate at 50 µg

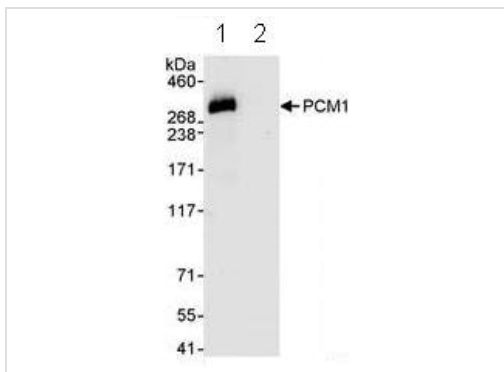
Lane 5 : Mouse NIH3T3 cell lysate at 50 µg

Observed band size: 270 kDa

[why is the actual band size different from the predicted?](#)

Additional bands at: 60 kDa. We are unsure as to the identity of these extra bands.

Detection: Chemiluminescence with exposure times of 30 seconds



Immunoprecipitation - Anti-PCM1 antibody (ab72443)

Immunoprecipitation of PCM1 from 1mg HeLa whole cell lysate by 3 µg ab72443 followed by WB (20% of IP loaded):

Lane 1: PCM1 precipitate

Lane 2: Control IgG

For blotting immunoprecipitated PCM1, ab72443 was used at 1 µg/ml.

Detection: Chemiluminescence with an exposure time of 10 seconds.

Please note: All products are "FOR RESEARCH USE ONLY. NOT FOR USE IN DIAGNOSTIC PROCEDURES"

Our Abpromise to you: Quality guaranteed and expert technical support

- Replacement or refund for products not performing as stated on the datasheet
- Valid for 12 months from date of delivery
- Response to your inquiry within 24 hours
- We provide support in Chinese, English, French, German, Japanese and Spanish
- Extensive multi-media technical resources to help you
- We investigate all quality concerns to ensure our products perform to the highest standards

If the product does not perform as described on this datasheet, we will offer a refund or replacement. For full details of the Abpromise, please visit <https://www.abcam.com/abpromise> or contact our technical team.

Terms and conditions

- Guarantee only valid for products bought direct from Abcam or one of our authorized distributors