

Product datasheet

Anti-PCPE-2 antibody ab232721

8 Images

Overview

Product name	Anti-PCPE-2 antibody
Description	Rabbit polyclonal to PCPE-2
Host species	Rabbit
Tested applications	Suitable for: WB, IHC-P
Species reactivity	Reacts with: Mouse, Human
Immunogen	<p>Recombinant fragment corresponding to Human PCPE-2 aa 297-415. (N-terminal His-tag and S-tags; Expressed in E.coli). Sequence:</p> <p>CQQKCRRTGTLEGNYCSSDFVLAGTVITITRDGSLHATVS IINIYKEGN LAIQQAGKNMSARLTVVCKQCPLLRRLNYIIMGQVGEDG RGKIMPNSFI MMFKTKNQKLLDALKNKQC</p> <p>Database link: Q9UKZ9</p> <p style="text-align: right;"> Run BLAST with Run BLAST with </p>
Positive control	IHC-P: Human liver, stomach, kidney, cerebrum, prostate and colorectal cancer tissues. WB: Mouse heart tissue lysate; Recombinant human PCPE-2 protein.
General notes	<p>Previously labelled as PCOLE2.</p> <p>Reproducibility is key to advancing scientific discovery and accelerating scientists' next breakthrough.</p> <p>Abcam is leading the way with our range of recombinant antibodies, knockout-validated antibodies and knockout cell lines, all of which support improved reproducibility.</p> <p>We are also planning to innovate the way in which we present recommended applications and species on our product datasheets, so that only applications & species that have been tested in our own labs, our suppliers or by selected trusted collaborators are covered by our Abpromise™ guarantee.</p> <p>In preparation for this, we have started to update the applications & species that this product is Abpromise guaranteed for.</p> <p>We are also updating the applications & species that this product has been “predicted to work with,” however this information is not covered by our Abpromise guarantee.</p> <p>Applications & species from publications and Abreviews that have not been tested in our own labs or in those of our suppliers are not covered by the Abpromise guarantee.</p>

Please check that this product meets your needs before purchasing. If you have any questions, special requirements or concerns, please send us an inquiry and/or contact our Support team ahead of purchase. Recommended alternatives for this product can be found below, as well as customer reviews and Q&As.

Properties

Form	Liquid
Storage instructions	Shipped at 4°C. Store at +4°C short term (1-2 weeks). Upon delivery aliquot. Store at -20°C long term. Avoid freeze / thaw cycle.
Storage buffer	pH: 7.40 Preservative: 0.02% Sodium azide Constituents: PBS, 50% Glycerol
Purity	Immunogen affinity purified
Purification notes	Antigen-specific affinity chromatography followed by Protein A affinity chromatography.
Clonality	Polyclonal
Isotype	IgG

Applications

Our [Abpromise guarantee](#) covers the use of **ab232721** in the following tested applications.

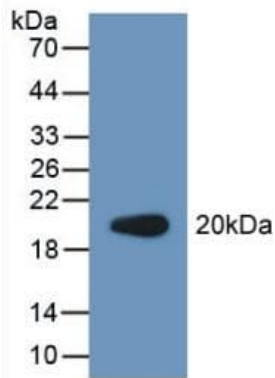
The application notes include recommended starting dilutions; optimal dilutions/concentrations should be determined by the end user.

Application	Abreviews	Notes
WB		Use a concentration of 0.5 - 2 µg/ml. Predicted molecular weight: 46 kDa.
IHC-P		Use a concentration of 5 - 20 µg/ml.

Target

Function	Binds to the C-terminal propeptide of types I and II procollagens and may enhance the cleavage of that propeptide by BMP1.
Tissue specificity	Highly expressed in the heart, trabecular meshwork, pituitary gland, bladder, mammary gland, trachea and placenta and weakly expressed in the brain. Expressed in cartilage.
Sequence similarities	Contains 2 CUB domains. Contains 1 NTR domain.
Post-translational modifications	O-glycosylated; contains sialic acid.
Cellular localization	Secreted.

Images



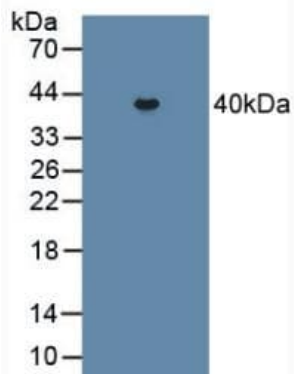
Western blot - Anti-PCPE-2 antibody (ab232721)

Anti-PCPE-2 antibody (ab232721) at 2 µg/ml + Recombinant human PCPE-2 protein

Secondary

HRP-Linked Guinea pig anti-rabbit at 1/2000 dilution

Predicted band size: 46 kDa



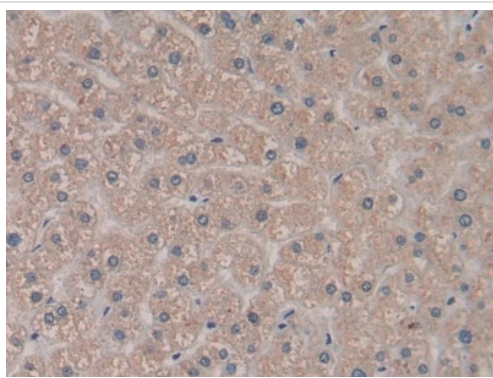
Western blot - Anti-PCPE-2 antibody (ab232721)

Anti-PCPE-2 antibody (ab232721) at 2 µg/ml + Mouse heart tissue lysate

Secondary

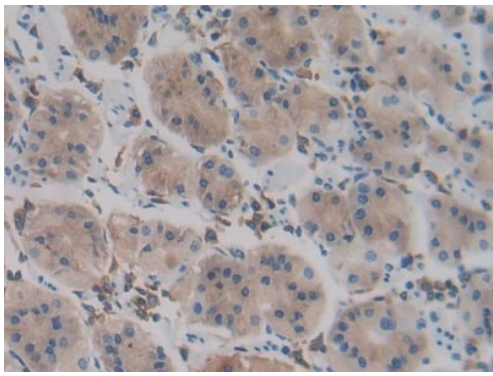
HRP-Linked Guinea pig anti-rabbit at 1/2000 dilution

Predicted band size: 46 kDa



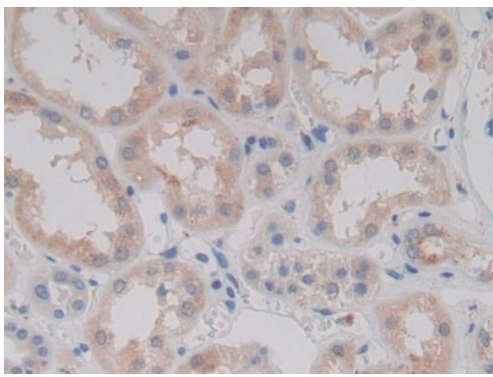
Immunohistochemistry (Formalin/PFA-fixed paraffin-embedded sections) - Anti-PCPE-2 antibody (ab232721)

Formalin-fixed, paraffin-embedded human liver tissue stained for PCPE-2 using ab232721 at 20 µg/ml in immunohistochemical analysis. DAB staining.



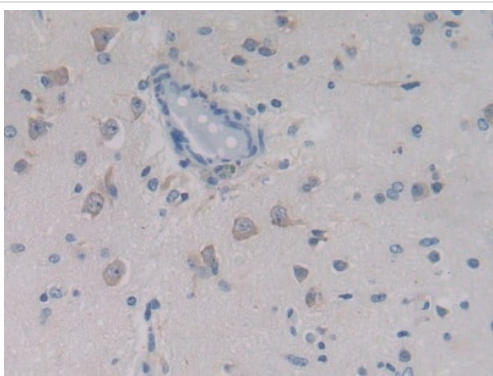
Immunohistochemistry (Formalin/PFA-fixed paraffin-embedded sections) - Anti-PCPE-2 antibody (ab232721)

Formalin-fixed, paraffin-embedded human stomach tissue stained for PCPE-2 using ab232721 at 20 $\mu\text{g/ml}$ in immunohistochemical analysis. DAB staining.



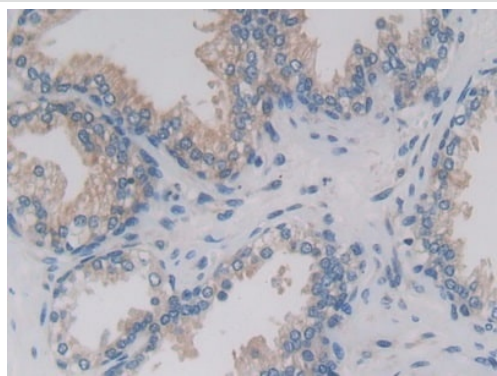
Immunohistochemistry (Formalin/PFA-fixed paraffin-embedded sections) - Anti-PCPE-2 antibody (ab232721)

Formalin-fixed, paraffin-embedded human kidney tissue stained for PCPE-2 using ab232721 at 20 $\mu\text{g/ml}$ in immunohistochemical analysis. DAB staining.



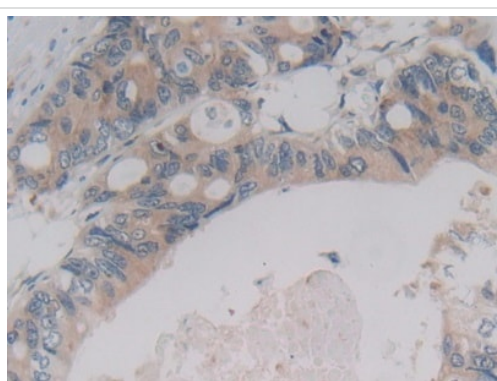
Immunohistochemistry (Formalin/PFA-fixed paraffin-embedded sections) - Anti-PCPE-2 antibody (ab232721)

Formalin-fixed, paraffin-embedded human cerebrum tissue stained for PCPE-2 using ab232721 at 20 $\mu\text{g/ml}$ in immunohistochemical analysis. DAB staining.



Immunohistochemistry (Formalin/PFA-fixed paraffin-embedded sections) - Anti-PCPE-2 antibody (ab232721)

Formalin-fixed, paraffin-embedded human prostate tissue stained for PCPE-2 using ab232721 at 20 µg/ml in immunohistochemical analysis. DAB staining.



Immunohistochemistry (Formalin/PFA-fixed paraffin-embedded sections) - Anti-PCPE-2 antibody (ab232721)

Formalin-fixed, paraffin-embedded human colorectal cancer tissue stained for PCPE-2 using ab232721 at 20 µg/ml in immunohistochemical analysis. DAB staining.

Please note: All products are "FOR RESEARCH USE ONLY. NOT FOR USE IN DIAGNOSTIC PROCEDURES"

Our Abpromise to you: Quality guaranteed and expert technical support

- Replacement or refund for products not performing as stated on the datasheet
- Valid for 12 months from date of delivery
- Response to your inquiry within 24 hours

- We provide support in Chinese, English, French, German, Japanese and Spanish
- Extensive multi-media technical resources to help you
- We investigate all quality concerns to ensure our products perform to the highest standards

If the product does not perform as described on this datasheet, we will offer a refund or replacement. For full details of the Abpromise, please visit <https://www.abcam.com/abpromise> or contact our technical team.

Terms and conditions

- Guarantee only valid for products bought direct from Abcam or one of our authorized distributors