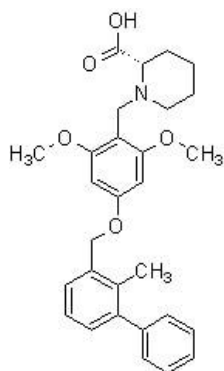


Product datasheet

PD-1/PD-L1 inhibitor 1, small molecule inhibitor
ab230369

Overview

Product name	PD-1/PD-L1 inhibitor 1, small molecule inhibitor
Description	Small molecule inhibitor of the PD-1/PD-L1 interaction
Biological description	PD-1/PD-L1 inhibitor 1 blocks the PD-1/PD-L1 interaction with an IC ₅₀ of 6 nM in a cell-free HTRF assay.
Purity	> 98%
CAS Number	1675201-83-8
Chemical structure	



Properties

Chemical name	(2S)-1-[[2,6-dimethoxy-4-[(2-methyl-3-phenylphenyl)methoxy]phenyl]methyl]piperidine-2-carboxylic acid
Molecular weight	475.86
Molecular formula	C ₂₉ H ₃₃ NO ₅
PubChem identifier	91663303
Storage instructions	Shipped at 4°C. Store at -20°C.
Solubility overview	200 mM in DMSO 200 mM in water 200 mM in ethanol
SMILES	<chem>CC1=C(C=CC=C1COC2=CC(=C(C(=C2)OC)CN3CCCCC3C(=O)O)OC)C4=CC=CC=C4</chem>

Source

Synthetic

Please note: All products are "FOR RESEARCH USE ONLY. NOT FOR USE IN DIAGNOSTIC PROCEDURES, NOT FOR USE IN HUMANS"

Our Abpromise to you: Quality guaranteed and expert technical support

- Replacement or refund for products not performing as stated on the datasheet
- Valid for 12 months from date of delivery
- Response to your inquiry within 24 hours

- We provide support in Chinese, English, French, German, Japanese and Spanish
- Extensive multi-media technical resources to help you
- We investigate all quality concerns to ensure our products perform to the highest standards

If the product does not perform as described on this datasheet, we will offer a refund or replacement. For full details of the Abpromise, please visit <https://www.abcam.com/abpromise> or contact our technical team.

Terms and conditions

- Guarantee only valid for products bought direct from Abcam or one of our authorized distributors
- Abcam biochemicals are novel compounds and we have not tested their biological activity in house. Please use the literature to identify how to use these products effectively. If you require further assistance please contact the scientific support team