

Product datasheet

PerCP/Cy5.5® Anti-PD-L1 antibody [29E.2A3] ab272349

2 Images

Overview

Product name	PerCP/Cy5.5® Anti-PD-L1 antibody [29E.2A3]
Description	PerCP/Cy5.5® Mouse monoclonal [29E.2A3] to PD-L1
Host species	Mouse
Conjugation	PerCP/Cy5.5®. Ex: 482nm, Em: 690nm
Tested applications	Suitable for: Flow Cyt
Species reactivity	Reacts with: Human
Immunogen	Full length native protein (purified) corresponding to Human PD-L1. Database link: Q9NZQ7
Positive control	Flow cyt: peripheral blood mononuclear cells.
General notes	<p>This product or portions thereof is manufactured under license from Carnegie Mellon University under U.S. Patent Number 5, 268, 486 and related patents. Cy and CyDye are trademarks of GE Healthcare Limited.</p> <p>Reproducibility is key to advancing scientific discovery and accelerating scientists' next breakthrough.</p> <p>Abcam is leading the way with our range of recombinant antibodies, knockout-validated antibodies and knockout cell lines, all of which support improved reproducibility.</p> <p>We are also planning to innovate the way in which we present recommended applications and species on our product datasheets, so that only applications & species that have been tested in our own labs, our suppliers or by selected trusted collaborators are covered by our Abpromise™ guarantee.</p> <p>In preparation for this, we have started to update the applications & species that this product is Abpromise guaranteed for.</p> <p>We are also updating the applications & species that this product has been “predicted to work with,” however this information is not covered by our Abpromise guarantee.</p> <p>Applications & species from publications and Abreviews that have not been tested in our own labs or in those of our suppliers are not covered by the Abpromise guarantee.</p> <p>Please check that this product meets your needs before purchasing. If you have any questions, special requirements or concerns, please send us an inquiry and/or contact our Support team ahead of purchase. Recommended alternatives for this product can be found below, as well as customer reviews and Q&As.</p>

Properties

Form	Liquid
Storage instructions	Shipped at 4°C. Store at +4°C short term (1-2 weeks). Store at +4°C. Do Not Freeze.
Storage buffer	pH: 7.4 Preservative: 0.1% Sodium azide Constituent: PBS
Purity	Size exclusion
Purification notes	Purified from TCS.
Clonality	Monoclonal
Clone number	29E.2A3
Isotype	IgG2a
Light chain type	kappa

Applications

Our [Abpromise guarantee](#) covers the use of **ab272349** in the following tested applications.

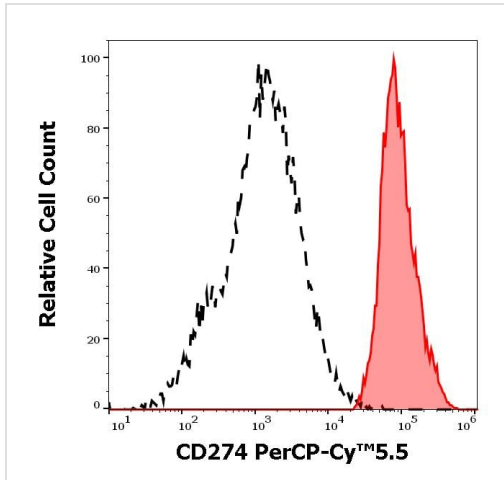
The application notes include recommended starting dilutions; optimal dilutions/concentrations should be determined by the end user.

Application	Abreviews	Notes
Flow Cyt		Use 4µg for 10 cells.

Target

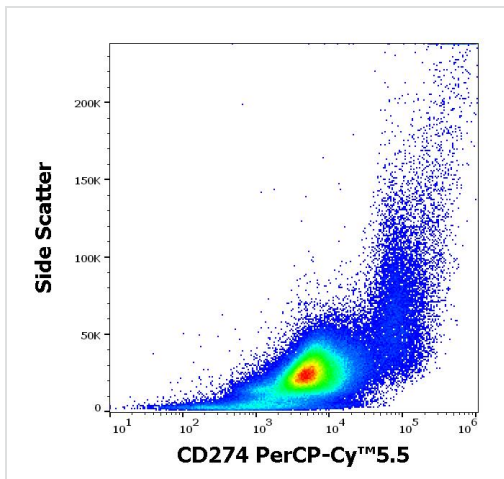
Function	Involved in the costimulatory signal, essential for T-cell proliferation and production of IL10 and IFNG, in an IL2-dependent and a PDCD1-independent manner. Interaction with PDCD1 inhibits T-cell proliferation and cytokine production.
Tissue specificity	Highly expressed in the heart, skeletal muscle, placenta and lung. Weakly expressed in the thymus, spleen, kidney and liver. Expressed on activated T- and B-cells, dendritic cells, keratinocytes and monocytes.
Sequence similarities	Belongs to the immunoglobulin superfamily. BTN/MOG family. Contains 1 Ig-like C2-type (immunoglobulin-like) domain. Contains 1 Ig-like V-type (immunoglobulin-like) domain.
Cellular localization	Cell membrane and Endomembrane system.

Images



Separation of human monocytes (Red) from cellular debris (black-dashed) in flow cytometric analysis labeling CD274 using ab272349. (4 μ l reagent per million cells in 100 μ l of cell suspension).

Flow Cytometry - PerCP/Cy5.5® Anti-PD-L1 antibody [29E.2A3] (ab272349)



Flow cytometric analysis of peripheral blood mononuclear cells labeling CD274 with ab272349 at 4 μ l reagent per million cells in 100 μ l of cell suspension. (4 μ l reagent per million cells in 100 μ l of cell suspension).

Flow Cytometry - PerCP/Cy5.5® Anti-PD-L1 antibody [29E.2A3] (ab272349)

Please note: All products are "FOR RESEARCH USE ONLY. NOT FOR USE IN DIAGNOSTIC PROCEDURES"

Our Abpromise to you: Quality guaranteed and expert technical support

- Replacement or refund for products not performing as stated on the datasheet
- Valid for 12 months from date of delivery
- Response to your inquiry within 24 hours
- We provide support in Chinese, English, French, German, Japanese and Spanish

- Extensive multi-media technical resources to help you
- We investigate all quality concerns to ensure our products perform to the highest standards

If the product does not perform as described on this datasheet, we will offer a refund or replacement. For full details of the Abpromise, please visit <https://www.abcam.com/abpromise> or contact our technical team.

Terms and conditions

- Guarantee only valid for products bought direct from Abcam or one of our authorized distributors