

Product datasheet

Anti-PD-L1 antibody [MIH6] - Low endotoxin, Azide free ab80276

★★★★★ 5 Abreviews 13 References 1 Image

Overview

Product name	Anti-PD-L1 antibody [MIH6] - Low endotoxin, Azide free
Description	Rat monoclonal [MIH6] to PD-L1 - Low endotoxin, Azide free
Host species	Rat
Tested applications	Suitable for: Flow Cyt
Species reactivity	Reacts with: Mouse
Immunogen	Tissue, cells or virus. This information is proprietary to Abcam and/or its suppliers.
Positive control	Flow Cyt: C57BL/6 mouse splenocytes.
General notes	<p>Please note the manufacture has changed and this item is currently only recommended for Flow Cytometry.</p> <p>The Life Science industry has been in the grips of a reproducibility crisis for a number of years. Abcam is leading the way in addressing this with our range of recombinant monoclonal antibodies and knockout edited cell lines for gold-standard validation. Please check that this product meets your needs before purchasing.</p> <p>If you have any questions, special requirements or concerns, please send us an inquiry and/or contact our Support team ahead of purchase. Recommended alternatives for this product can be found below, along with publications, customer reviews and Q&As</p>

Properties

Form	Liquid
Storage instructions	Shipped at 4°C. Store at +4°C short term (1-2 weeks). Upon delivery aliquot. Store at -20°C. Avoid freeze / thaw cycle.
Storage buffer	pH: 7.20 Constituent: PBS
Carrier free	Yes
Purity	Affinity purified
Purification notes	<0.01 EU/ug Endotoxin (LAL).
Clonality	Monoclonal

Clone number	MIH6
Isotype	IgG2a
Light chain type	kappa

Applications

The Abpromise guarantee Our [Abpromise guarantee](#) covers the use of ab80276 in the following tested applications.

The application notes include recommended starting dilutions; optimal dilutions/concentrations should be determined by the end user.

Application	Abreviews	Notes
Flow Cyt		Use at an assay dependent concentration. Use $\leq 0.5 \mu\text{g}$ per million cells in 100 μl volume or 100 μl of whole blood.

Target

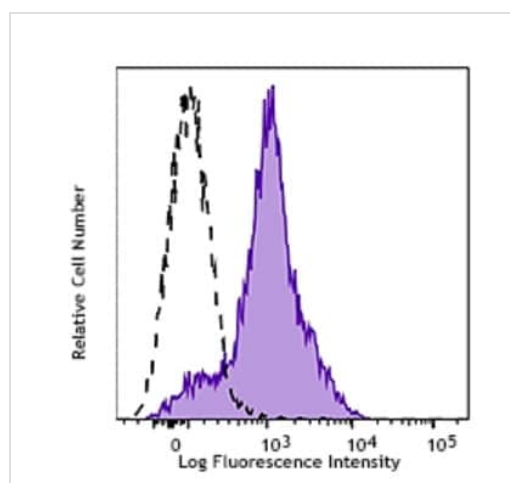
Function Involved in the costimulatory signal, essential for T-cell proliferation and production of IL10 and IFNG, in an IL2-dependent and a PDCD1-independent manner. Interaction with PDCD1 inhibits T-cell proliferation and cytokine production.

Tissue specificity Highly expressed in the heart, skeletal muscle, placenta and lung. Weakly expressed in the thymus, spleen, kidney and liver. Expressed on activated T- and B-cells, dendritic cells, keratinocytes and monocytes.

Sequence similarities Belongs to the immunoglobulin superfamily. BTN/MOG family.
Contains 1 Ig-like C2-type (immunoglobulin-like) domain.
Contains 1 Ig-like V-type (immunoglobulin-like) domain.

Cellular localization Cell membrane and Endomembrane system.

Images



C57BL/6 mouse splenocytes were stained with ab80276 (purple filled histogram) or purified rat IgG2a, κ isotype control (black dashed line open histogram), followed by anti-Rat IgG PE.

Flow Cytometry - Anti-PD-L1 antibody [B7-H1] - Low endotoxin, Azide free (ab80276)

Please note: All products are "FOR RESEARCH USE ONLY. NOT FOR USE IN DIAGNOSTIC PROCEDURES"

Our Abpromise to you: Quality guaranteed and expert technical support

- Replacement or refund for products not performing as stated on the datasheet
- Valid for 12 months from date of delivery
- Response to your inquiry within 24 hours

- We provide support in Chinese, English, French, German, Japanese and Spanish
- Extensive multi-media technical resources to help you
- We investigate all quality concerns to ensure our products perform to the highest standards

If the product does not perform as described on this datasheet, we will offer a refund or replacement. For full details of the Abpromise, please visit <https://www.abcam.com/abpromise> or contact our technical team.

Terms and conditions

- Guarantee only valid for products bought direct from Abcam or one of our authorized distributors