

Product datasheet

Anti-PD1 antibody [EPR4877(2)] ab137132

Recombinant RabMAb

★★★★★ 2 Abreviews 22 References 7 Images

Overview

Product name	Anti-PD1 antibody [EPR4877(2)]
Description	Rabbit monoclonal [EPR4877(2)] to PD1
Host species	Rabbit
Tested applications	Suitable for: IHC-P Unsuitable for: Flow Cyt or ICC/IF
Species reactivity	Reacts with: Human
Immunogen	Synthetic peptide within Human PD1 aa 1-100. The exact sequence is proprietary. (Peptide available as ab173374)
Positive control	IHC-P: Human T cell lymphoma and Human tonsil tissues; Human normal brain and skeletal muscle tissue.
General notes	<p>Mouse, Rat: We have preliminary internal testing data to indicate this antibody may not react with these species. Please contact us for more information.</p> <p>Our RabMAb[®] technology is a patented hybridoma-based technology for making rabbit monoclonal antibodies. For details on our patents, please refer to RabMab[®] patents</p> <p>We are constantly working hard to ensure we provide our customers with best in class antibodies. As a result of this work we are pleased to now offer this antibody in purified format. We are in the process of updating our datasheets. The purified format is designated 'PUR' on our product labels. If you have any questions regarding this update, please contact our Scientific Support team.</p> <p>This product is a recombinant rabbit monoclonal antibody.</p>

Properties

Form	Liquid
Storage instructions	Shipped at 4°C. Store at +4°C short term (1-2 weeks). Upon delivery aliquot. Store at -20°C. Avoid freeze / thaw cycle.
Storage buffer	Preservative: 0.01% Sodium azide Constituents: 40% Glycerol, 0.05% BSA, 59% PBS
Purity	Protein A purified
Clonality	Monoclonal

Clone number EPR4877(2)

Isotype IgG

Applications

Our [Abpromise guarantee](#) covers the use of **ab137132** in the following tested applications.

The application notes include recommended starting dilutions; optimal dilutions/concentrations should be determined by the end user.

Application	Abreviews	Notes
IHC-P	★★★★★	1/250 - 1/500. Perform heat mediated antigen retrieval before commencing with IHC staining protocol. See IHC antigen retrieval protocols .

Application notes Is unsuitable for Flow Cyt or ICC/IF.

Target

Function Possible cell death inducer, in association with other factors.

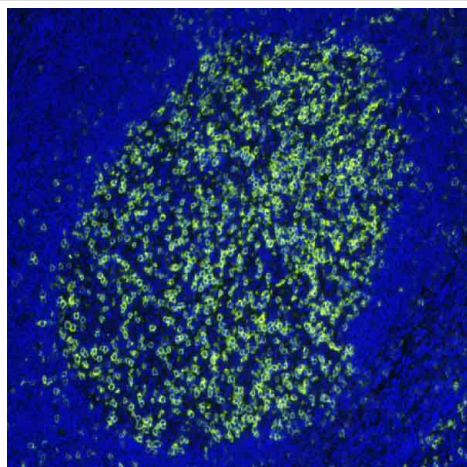
Involvement in disease Genetic variation in PDCD1 is associated with susceptibility to systemic lupus erythematosus type 2 (SLEB2) [MIM:605218]. Systemic lupus erythematosus is a chronic, inflammatory and often febrile multisystemic disorder of connective tissue. It affects principally the skin, joints, kidneys and serosal membranes. It is thought to represent a failure of the regulatory mechanisms of the autoimmune system.

Sequence similarities Contains 1 Ig-like V-type (immunoglobulin-like) domain.

Developmental stage Induced at programmed cell death.

Cellular localization Membrane.

Images

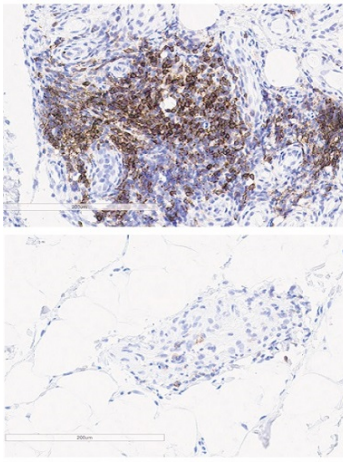


Immunohistochemistry (Formalin/PFA-fixed paraffin-embedded sections) - Anti-PD1 antibody [EPR4877(2)] (ab137132)

Immunohistochemistry (Formalin/PFA-fixed paraffin-embedded sections) analysis of human tonsil tissue labelling PD1 with ab137132 at a dilution of 1/500. Heat mediated antigen retrieval was performed using EDTA antigen retrieval solution, and microwave treatment for 20 min at 20% power. Anti-Rabbit HRP polymer was used as secondary antibody. Opal tyramide amplification was performed using Opal 540 fluorophore. Counterstained with DAPI stain.

Image scanned with Vectra 3.0 and analyzed via Inform software.

This image was courteously provided by Dr. Houssein Abdul Sater, Georgia Cancer Center.

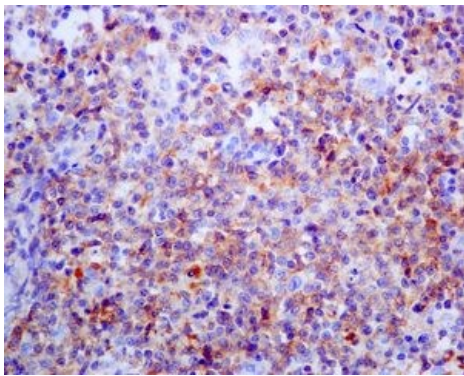


Immunohistochemical analysis of rheumatoid arthritis synovial biopsy specimens stained for PD1 using ab137132 in immunohistochemical analysis.

Immunohistochemistry (Formalin/PFA-fixed paraffin-embedded sections) - Anti-PD1 antibody

[EPR4877(2)] (ab137132)

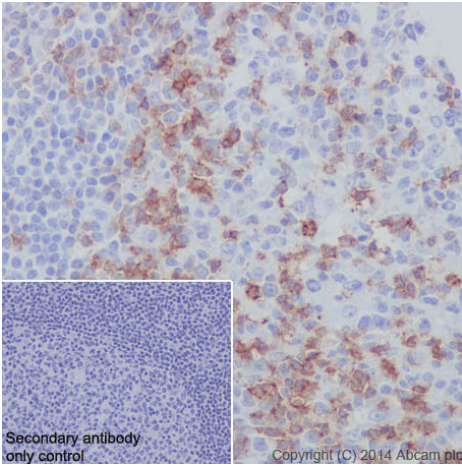
Guo Y et al. Immune checkpoint inhibitor PD-1 pathway is down-regulated in synovium at various stages of rheumatoid arthritis disease progression. PLoS One 13:e0192704 (2018).



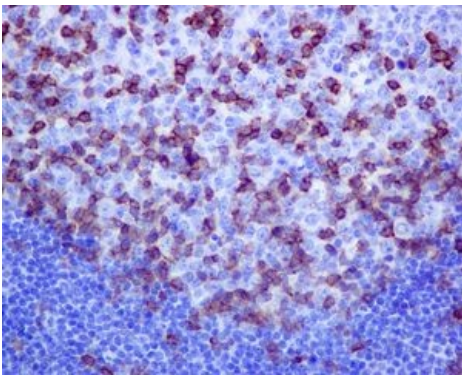
Immunohistochemistry (Formalin/PFA-fixed paraffin-embedded sections) analysis of human T-cell lymphoma tissue labelling PD1 with unpurified ab137132 at a dilution of 1/250.

Immunohistochemistry (Formalin/PFA-fixed paraffin-embedded sections) - Anti-PD1 antibody

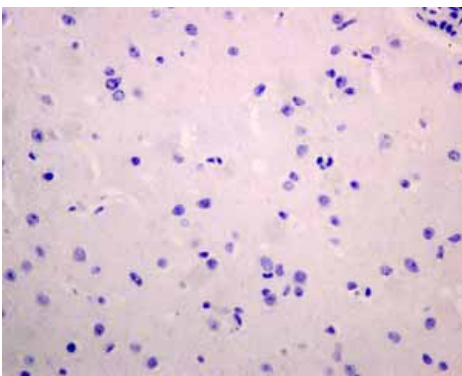
[EPR4877(2)] (ab137132)



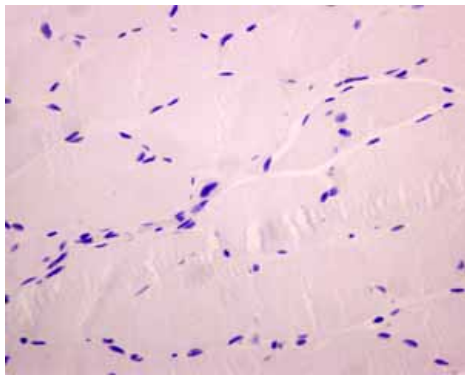
Immunohistochemistry (Formalin/PFA-fixed paraffin-embedded sections) - Anti-PD1 antibody [EPR4877(2)] (ab137132)



Immunohistochemistry (Formalin/PFA-fixed paraffin-embedded sections) - Anti-PD1 antibody [EPR4877(2)] (ab137132)



Immunohistochemistry (Formalin/PFA-fixed paraffin-embedded sections) - Anti-PD1 antibody [EPR4877(2)] (ab137132)



Immunohistochemical analysis using ab137132 showing negative staining in human skeletal muscle tissue.

Immunohistochemistry (Formalin/PFA-fixed paraffin-embedded sections) - Anti-PD1 antibody [EPR4877(2)] (ab137132)

Please note: All products are "FOR RESEARCH USE ONLY AND ARE NOT INTENDED FOR DIAGNOSTIC OR THERAPEUTIC USE"

Our Abpromise to you: Quality guaranteed and expert technical support

- Replacement or refund for products not performing as stated on the datasheet
- Valid for 12 months from date of delivery
- Response to your inquiry within 24 hours
- We provide support in Chinese, English, French, German, Japanese and Spanish
- Extensive multi-media technical resources to help you
- We investigate all quality concerns to ensure our products perform to the highest standards

If the product does not perform as described on this datasheet, we will offer a refund or replacement. For full details of the Abpromise, please visit <https://www.abcam.com/abpromise> or contact our technical team.

Terms and conditions

- Guarantee only valid for products bought direct from Abcam or one of our authorized distributors