

Product datasheet

Anti-PDCD2 antibody [EPR7158] ab133324

Recombinant **RabMAb**

[2 References](#) [2 Images](#)

Overview

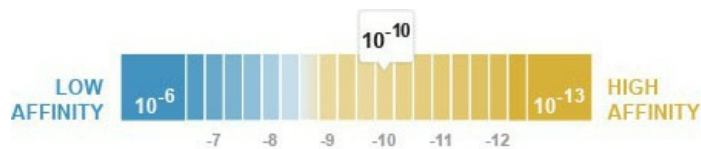
Product name	Anti-PDCD2 antibody [EPR7158]
Description	Rabbit monoclonal [EPR7158] to PDCD2
Host species	Rabbit
Tested applications	Suitable for: WB, IP Unsuitable for: Flow Cyt, ICC or IHC-P
Species reactivity	Reacts with: Mouse, Rat, Human
Immunogen	Synthetic peptide within Human PDCD2 aa 1-100. The exact sequence is proprietary.
Positive control	293T, HeLa, and Ramos cell lysates.
General notes	

Our RabMAb[®] technology is a patented hybridoma-based technology for making rabbit monoclonal antibodies. For details on our patents, please refer to [RabMAb[®] patents](#).

This product is a [recombinant rabbit monoclonal antibody](#).

Properties

Form	Liquid
Storage instructions	Shipped at 4°C. Store at -20°C. Stable for 12 months at -20°C.
Dissociation constant (K_D)	K _D = 1.06 x 10 ⁻¹⁰ M



[Learn more about K_D](#)

Storage buffer	pH: 7.20 Preservative: 0.01% Sodium azide Constituents: 9% PBS, 40% Glycerol, 0.05% BSA, 50% Tissue culture supernatant
Purity	Tissue culture supernatant
Clonality	Monoclonal

Clone number EPR7158
Isotype IgG

Applications

Our [Abpromise guarantee](#) covers the use of **ab133324** in the following tested applications.

The application notes include recommended starting dilutions; optimal dilutions/concentrations should be determined by the end user.

Application	Abreviews	Notes
WB		1/1000 - 1/10000. Predicted molecular weight: 39 kDa.
IP		1/10 - 1/100.

Application notes Is unsuitable for Flow Cyt, ICC or IHC-P.

Target

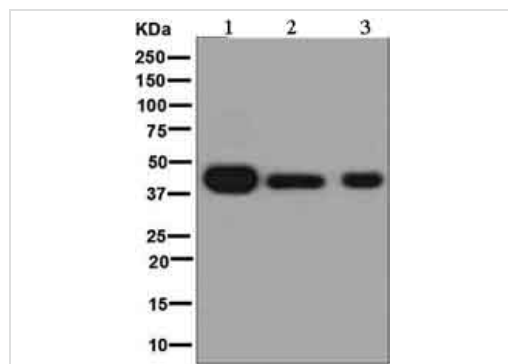
Function May be a DNA-binding protein with a regulatory function. May play an important role in cell death and/or in regulation of cell proliferation.

Tissue specificity Ubiquitous.

Sequence similarities Contains 1 MYND-type zinc finger.

Cellular localization Nucleus.

Images



Western blot - Anti-PDCD2 antibody [EPR7158]
(ab133324)

All lanes : Anti-PDCD2 antibody [EPR7158] (ab133324) at 1/1000 dilution

Lane 1 : 293T cell lysate

Lane 2 : HeLa cell lysate

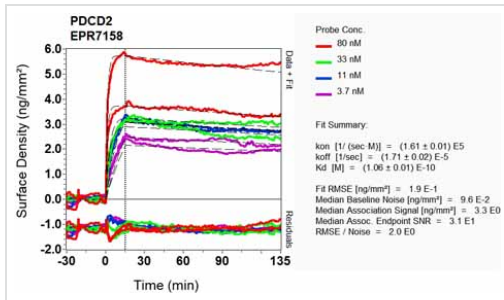
Lane 3 : Ramos cell lysate

Lysates/proteins at 10 µg per lane.

Secondary

All lanes : HRP labelled goat anti-rabbit at 1/2000 dilution

Predicted band size: 39 kDa



Other - Anti-PDCD2 antibody [EPR7158] (ab133324)

Equilibrium dissociation constant (K_D)

Learn more about K_D

[Click here to learn more about \$K_D\$](#)

Please note: All products are "FOR RESEARCH USE ONLY. NOT FOR USE IN DIAGNOSTIC PROCEDURES"

Our Abpromise to you: Quality guaranteed and expert technical support

- Replacement or refund for products not performing as stated on the datasheet
- Valid for 12 months from date of delivery
- Response to your inquiry within 24 hours
- We provide support in Chinese, English, French, German, Japanese and Spanish
- Extensive multi-media technical resources to help you
- We investigate all quality concerns to ensure our products perform to the highest standards

If the product does not perform as described on this datasheet, we will offer a refund or replacement. For full details of the Abpromise, please visit <https://www.abcam.com/abpromise> or contact our technical team.

Terms and conditions

- Guarantee only valid for products bought direct from Abcam or one of our authorized distributors