

Product datasheet

Anti-PDCL3 antibody - C-terminal ab191612

3 Images

Overview

Product name	Anti-PDCL3 antibody - C-terminal
Description	Rabbit polyclonal to PDCL3 - C-terminal
Host species	Rabbit
Specificity	ab191612 is predicted to not cross-react with other members of the PDCL protein family.
Tested applications	Suitable for: WB, IHC-P
Species reactivity	Reacts with: Mouse, Rat, Human
Immunogen	Synthetic peptide within Human PDCL3 (C terminal). The exact sequence is proprietary. Raised against a 14 amino acid peptide near the carboxy terminus. Database link: Q9H2J4
Positive control	Human brain tissue lysate, Mouse liver tissue.
General notes	<p>Reproducibility is key to advancing scientific discovery and accelerating scientists' next breakthrough.</p> <p>Abcam is leading the way with our range of recombinant antibodies, knockout-validated antibodies and knockout cell lines, all of which support improved reproducibility.</p> <p>We are also planning to innovate the way in which we present recommended applications and species on our product datasheets, so that only applications & species that have been tested in our own labs, our suppliers or by selected trusted collaborators are covered by our Abpromise™ guarantee.</p> <p>In preparation for this, we have started to update the applications & species that this product is Abpromise guaranteed for.</p> <p>We are also updating the applications & species that this product has been “predicted to work with,” however this information is not covered by our Abpromise guarantee.</p> <p>Applications & species from publications and Abreviews that have not been tested in our own labs or in those of our suppliers are not covered by the Abpromise guarantee.</p> <p>Please check that this product meets your needs before purchasing. If you have any questions, special requirements or concerns, please send us an inquiry and/or contact our Support team ahead of purchase. Recommended alternatives for this product can be found below, as well as customer reviews and Q&As.</p>

Properties

Form	Liquid
Storage instructions	Shipped at 4°C. Store at +4°C short term (1-2 weeks). Upon delivery aliquot. Store at -20°C long term. Avoid freeze / thaw cycle.
Storage buffer	pH: 7.2 Preservative: 0.02% Sodium azide Constituent: 99% PBS
Purity	Immunogen affinity purified
Clonality	Polyclonal
Isotype	IgG

Applications

Our [Abpromise guarantee](#) covers the use of **ab191612** in the following tested applications.

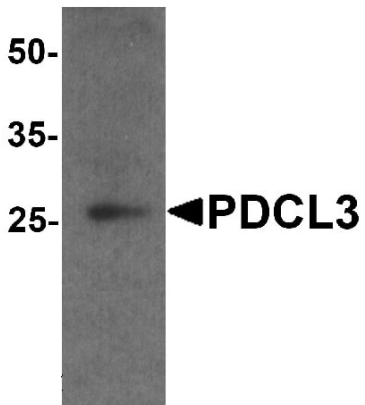
The application notes include recommended starting dilutions; optimal dilutions/concentrations should be determined by the end user.

Application	Abreviews	Notes
WB		Use a concentration of 1 - 2 µg/ml. Detects a band of approximately 25 kDa (predicted molecular weight: 28 kDa).
IHC-P		Use a concentration of 5 - 20 µg/ml.

Target

Function	Modulates the activation of caspases during apoptosis. Is a substrate for <i>Orgyia pseudotsugata</i> multicapsid polyhedrosis virus (OpMNPV) IAP-mediated ubiquitination.
Tissue specificity	Expressed in all tissues examined including spleen, thymus, prostate, testis, ovary, small intestine and colon.
Sequence similarities	Belongs to the phosphatidylcholine-specific phospholipase C family.
Cellular localization	Cytoplasm.

Images



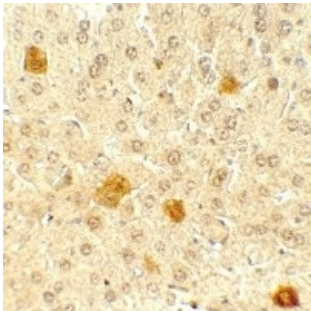
Western blot - Anti-PDCL3 antibody - C-terminal (ab191612)

Anti-PDCL3 antibody - C-terminal (ab191612) at 1 μ g/ml + Human brain tissue lysate at 15 μ g

Predicted band size: 28 kDa

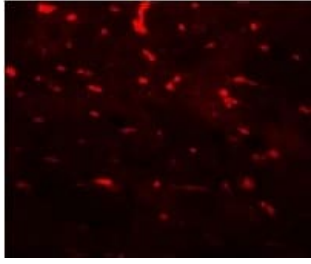
Observed band size: 25 kDa

[why is the actual band size different from the predicted?](#)



Immunohistochemistry (Formalin/PFA-fixed paraffin-embedded sections) - Anti-PDCL3 antibody - C-terminal (ab191612)

Immunohistochemistry of mouse liver tissue labelling PDCL3 with ab191612 at 5 μ g/ml.



Immunohistochemistry of mouse liver tissue labelling PDCL3 with ab191612 at 20 µg/ml.

Immunohistochemistry (Formalin/PFA-fixed paraffin-embedded sections) - Anti-PDCL3 antibody - C-terminal (ab191612)

Please note: All products are "FOR RESEARCH USE ONLY. NOT FOR USE IN DIAGNOSTIC PROCEDURES"

Our Abpromise to you: Quality guaranteed and expert technical support

- Replacement or refund for products not performing as stated on the datasheet
- Valid for 12 months from date of delivery
- Response to your inquiry within 24 hours
- We provide support in Chinese, English, French, German, Japanese and Spanish
- Extensive multi-media technical resources to help you
- We investigate all quality concerns to ensure our products perform to the highest standards

If the product does not perform as described on this datasheet, we will offer a refund or replacement. For full details of the Abpromise, please visit <https://www.abcam.com/abpromise> or contact our technical team.

Terms and conditions

- Guarantee only valid for products bought direct from Abcam or one of our authorized distributors