




Product datasheet

Anti-PDE11A antibody ab115624

2 Images

Overview

Product name	Anti-PDE11A antibody
Description	Goat polyclonal to PDE11A
Host species	Goat
Tested applications	Suitable for: WB, IHC-P
Species reactivity	<p>Reacts with: Human</p> <p>Predicted to work with: Mouse, Rat, Dog </p>
Immunogen	<p>Synthetic peptide:</p> <p>C-NSFKESMEKSSYSD</p> <p>, corresponding to internal sequence amino acids 455-468 of Human PDE11A (NP_058649.3; NP_001070665.1; NP_001070826.1; NP_001070664.1)</p> <p style="text-align: right;">  Run BLAST with  Run BLAST with </p>
Positive control	Human prostate tissue; Human prostate lysate
General notes	<p>Reproducibility is key to advancing scientific discovery and accelerating scientists' next breakthrough.</p> <p>Abcam is leading the way with our range of recombinant antibodies, knockout-validated antibodies and knockout cell lines, all of which support improved reproducibility.</p> <p>We are also planning to innovate the way in which we present recommended applications and species on our product datasheets, so that only applications & species that have been tested in our own labs, our suppliers or by selected trusted collaborators are covered by our Abpromise™ guarantee.</p> <p>In preparation for this, we have started to update the applications & species that this product is Abpromise guaranteed for.</p> <p>We are also updating the applications & species that this product has been “predicted to work with,” however this information is not covered by our Abpromise guarantee.</p> <p>Applications & species from publications and Abreviews that have not been tested in our own labs or in those of our suppliers are not covered by the Abpromise guarantee.</p> <p>Please check that this product meets your needs before purchasing. If you have any questions, special requirements or concerns, please send us an inquiry and/or contact our Support team ahead of purchase. Recommended alternatives for this product can be found below, as well as customer reviews and Q&As.</p>

Properties

Form	Liquid
Storage instructions	Shipped at 4°C. Store at +4°C short term (1-2 weeks). Upon delivery aliquot. Store at -20°C long term.
Storage buffer	pH: 7.30 Preservative: 0.02% Sodium azide Constituents: 0.5% BSA, 99% Tris buffered saline
Purity	Immunogen affinity purified
Clonality	Polyclonal
Isotype	IgG

Applications

Our [Abpromise guarantee](#) covers the use of **ab115624** in the following tested applications.

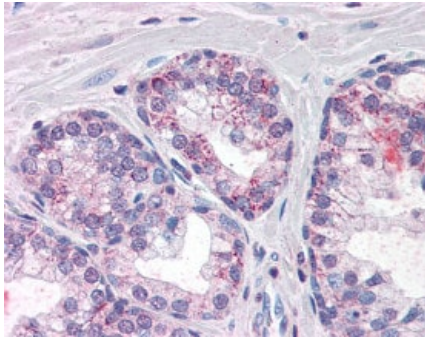
The application notes include recommended starting dilutions; optimal dilutions/concentrations should be determined by the end user.

Application	Abreviews	Notes
WB		Use a concentration of 0.5 - 1.5 µg/ml. Predicted molecular weight: 105 kDa.
IHC-P		Use a concentration of 10 µg/ml. Perform heat mediated antigen retrieval with citrate buffer pH 6 before commencing with IHC staining protocol.

Target

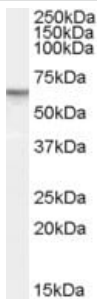
Function	Plays a role in signal transduction by regulating the intracellular concentration of cyclic nucleotides cAMP and cGMP. Catalyzes the hydrolysis of both cAMP and cGMP to 5'-AMP and 5'-GMP, respectively.
Tissue specificity	Isoform 1 is present in prostate, pituitary, heart and liver. It is however not present in testis nor in penis, suggesting that weak inhibition by Tadalafil (Cialis) is not relevant (at protein level). Isoform 2 may be expressed in testis. Isoform 4 is expressed in adrenal cortex.
Involvement in disease	Defects in PDE11A are the cause of primary pigmented nodular adrenocortical disease type 2 (PPNAD2) [MIM:610475]. Primary pigmented nodular adrenocortical disease is a rare bilateral adrenal defect causing ACTH-independent Cushing syndrome. PPNAD2 is characterized by adrenal glands with overall normal size and weight, and multiple small yellow-to-dark brown nodules surrounded by a cortex with a uniform appearance. Microscopically, there are moderate diffuse cortical hyperplasia with mostly nonpigmented nodules, multiple capsular deficits and massive circumscribed and infiltrating extra-adrenal cortical excrescences with micronodules. PPNAD2 leads to Cushing syndrome.
Sequence similarities	Belongs to the cyclic nucleotide phosphodiesterase family. Contains 2 GAF domains.
Domain	The tandem GAF domains bind cGMP, and regulate enzyme activity. The binding of cGMP leading to stimulate the enzyme activity.
Cellular localization	Cytoplasm > cytosol.

Images



Immunohistochemistry (Formalin/PFA-fixed paraffin-embedded sections) - Anti-PDE11A antibody (ab115624)

ab115624, at 10 µg/ml, staining PDE11A in formalin fixed, paraffin embedded Human prostate tissue by Immunohistochemistry. Following primary incubation slides were incubated with biotinylated anti-goat IgG secondary antibody, alkaline phosphatase-streptavidin and chromogen.



Western blot - Anti-PDE11A antibody (ab115624)

Anti-PDE11A antibody (ab115624) at 1 µg/ml + Human prostate lysate (in RIPA buffer) at 35 µg

Developed using the ECL technique.

Predicted band size: 105 kDa

Primary incubation: 1 hour

Please note: All products are "FOR RESEARCH USE ONLY. NOT FOR USE IN DIAGNOSTIC PROCEDURES"

Our Abpromise to you: Quality guaranteed and expert technical support

- Replacement or refund for products not performing as stated on the datasheet
- Valid for 12 months from date of delivery
- Response to your inquiry within 24 hours
- We provide support in Chinese, English, French, German, Japanese and Spanish
- Extensive multi-media technical resources to help you
- We investigate all quality concerns to ensure our products perform to the highest standards

If the product does not perform as described on this datasheet, we will offer a refund or replacement. For full details of the Abpromise, please visit <https://www.abcam.com/abpromise> or contact our technical team.

Terms and conditions

- Guarantee only valid for products bought direct from Abcam or one of our authorized distributors