

## Product datasheet

# Anti-PDE1B antibody [EPR12293(2)] ab182565

Recombinant RabMAb

★★★★☆ 1 Abreviews 8 Images

### Overview

<b>Product name</b>	Anti-PDE1B antibody [EPR12293(2)]
<b>Description</b>	Rabbit monoclonal [EPR12293(2)] to PDE1B
<b>Host species</b>	Rabbit
<b>Tested applications</b>	<b>Suitable for:</b> WB, IHC-P
<b>Species reactivity</b>	<b>Reacts with:</b> Mouse, Rat, Human
<b>Immunogen</b>	Recombinant fragment within Human PDE1B aa 1-150. The exact sequence is proprietary. Database link: <a href="#">Q01064</a>
<b>Positive control</b>	WB: Human cerebellum, Human brain, Mouse brain, and Rat brain lysates. IHC-P: human cerebellum, mouse cerebrum, and rat cerebrum tissues.
<b>General notes</b>	

This product is a recombinant monoclonal antibody, which offers several advantages including:

- High batch-to-batch consistency and reproducibility
- Improved sensitivity and specificity
- Long-term security of supply
- Animal-free production

For more information [see here](#).

Our RabMAb<sup>®</sup> technology is a patented hybridoma-based technology for making rabbit monoclonal antibodies. For details on our patents, please refer to [RabMAb<sup>®</sup> patents](#).

**We are constantly working hard to ensure we provide our customers with best in class antibodies. As a result of this work we are pleased to now offer this antibody in purified format. We are in the process of updating our datasheets. The purified format is designated 'PUR' on our product labels. If you have any questions regarding this update, please contact our Scientific Support team.**

Reproducibility is key to advancing scientific discovery and accelerating scientists' next breakthrough.

Abcam is leading the way with our range of recombinant antibodies, knockout-validated antibodies and knockout cell lines, all of which support improved reproducibility.

We are also planning to innovate the way in which we present recommended applications and species on our product datasheets, so that only applications & species that have been tested in

our own labs, our suppliers or by selected trusted collaborators are covered by our Abpromise™ guarantee.

In preparation for this, we have started to update the applications & species that this product is Abpromise guaranteed for.

We are also updating the applications & species that this product has been “predicted to work with,” however this information is not covered by our Abpromise guarantee.

Applications & species from publications and Abreviews that have not been tested in our own labs or in those of our suppliers are not covered by the Abpromise guarantee.

Please check that this product meets your needs before purchasing. If you have any questions, special requirements or concerns, please send us an inquiry and/or contact our Support team ahead of purchase. Recommended alternatives for this product can be found below, as well as customer reviews and Q&As.

## Properties

---

<b>Form</b>	Liquid
<b>Storage instructions</b>	Shipped at 4°C. Store at +4°C short term (1-2 weeks). Upon delivery aliquot. Store at -20°C long term. Avoid freeze / thaw cycle.
<b>Storage buffer</b>	pH: 7.2 Preservative: 0.01% Sodium azide Constituents: PBS, 40% Glycerol (glycerin, glycerine), 0.05% BSA
<b>Purity</b>	Protein A purified
<b>Clonality</b>	Monoclonal
<b>Clone number</b>	EPR12293(2)
<b>Isotype</b>	IgG

## Applications

---

Our [Abpromise guarantee](#) covers the use of **ab182565** in the following tested applications.

The application notes include recommended starting dilutions; optimal dilutions/concentrations should be determined by the end user.

Application	Abreviews	Notes
WB		1/1000 - 1/10000. Detects a band of approximately 61 kDa (predicted molecular weight: 61 kDa).
IHC-P		1/100 - 1/2000. Perform heat mediated antigen retrieval with Tris/EDTA buffer pH 9.0 before commencing with IHC staining protocol. 1:100 in human tissues / 1:2000 in mouse and rat tissues

---

## Target

---

<b>Function</b>	Cyclic nucleotide phosphodiesterase with a dual-specificity for the second messengers cAMP and cGMP, which are key regulators of many important physiological processes. Has a preference for cGMP as a substrate.
-----------------	--

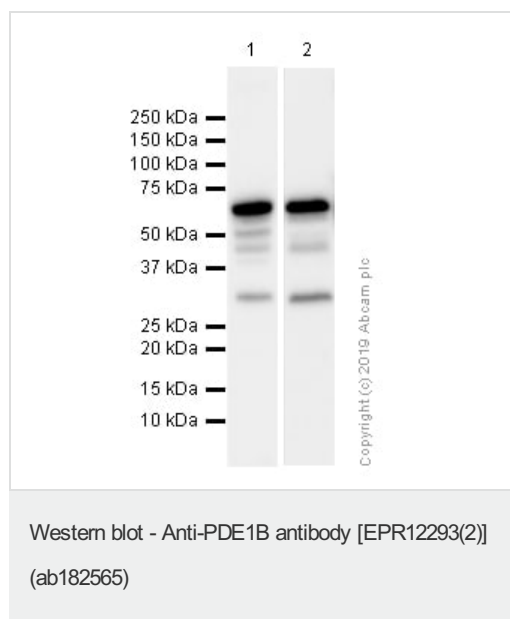
## Sequence similarities

Belongs to the cyclic nucleotide phosphodiesterase family. PDE1 subfamily.

## Cellular localization

Cytoplasm.

## Images



**All lanes :** Anti-PDE1B antibody [EPR12293(2)] (ab182565) at 1/1000 dilution (Purified)

**Lane 1 :** Human cerebellum lysates

**Lane 2 :** Human brain lysates

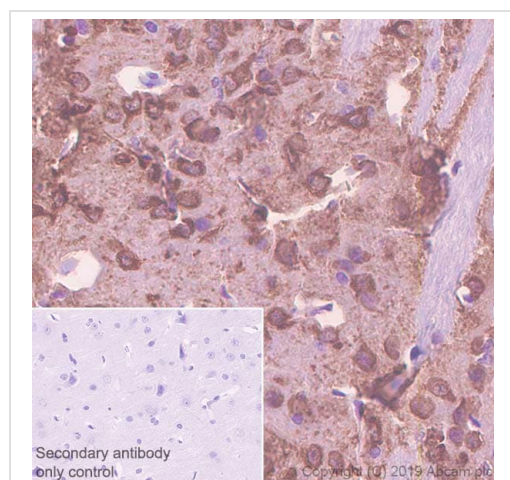
Lysates/proteins at 20 µg per lane.

### Secondary

**All lanes :** Goat Anti-Rabbit IgG (HRP) with minimal cross-reactivity with human IgG at 1/2000 dilution

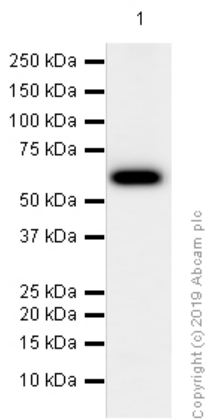
**Predicted band size:** 61 kDa

**Observed band size:** 61 kDa



Immunohistochemistry (Formalin/PFA-fixed paraffin-embedded sections) analysis of rat cerebrum tissue sections labeling PDE1B with purified ab182565 at 1/2000 dilution (0.47 µg/ml). Heat mediated antigen retrieval using Bond™ Epitope Retrieval Solution 1 (pH 6.0). Rabbit specific IHC polymer detection kit HRP/DAB (ab209101) was used as the secondary antibody. Negative control: PBS instead of the primary antibody. Hematoxylin was used as a counterstain.

Immunohistochemistry (Formalin/PFA-fixed paraffin-embedded sections) - Anti-PDE1B antibody [EPR12293(2)] (ab182565)



Western blot - Anti-PDE1B antibody [EPR12293(2)]  
(ab182565)

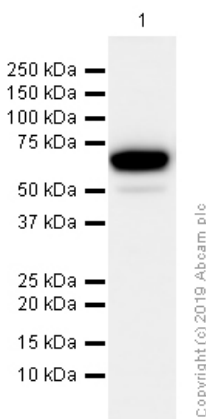
Anti-PDE1B antibody [EPR12293(2)] (ab182565) at 1/10000 dilution (Purified) + Rat brain lysates at 15  $\mu$ g

**Secondary**

Goat Anti-Rabbit IgG (HRP) with minimal cross-reactivity with human IgG at 1/5000 dilution

**Predicted band size:** 61 kDa

**Observed band size:** 61 kDa



Western blot - Anti-PDE1B antibody [EPR12293(2)]  
(ab182565)

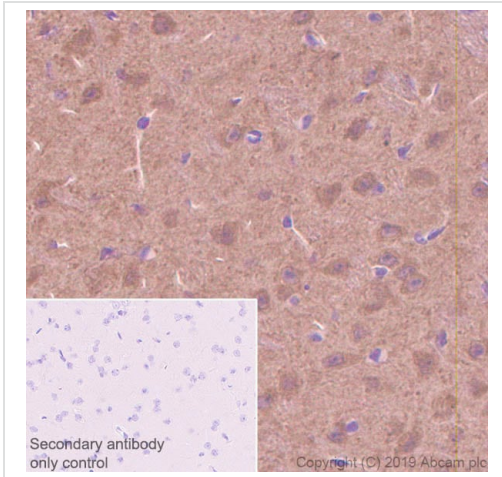
Anti-PDE1B antibody [EPR12293(2)] (ab182565) at 1/5000 dilution (Purified) + Mouse brain lysates at 20  $\mu$ g

**Secondary**

Goat Anti-Rabbit IgG (HRP) with minimal cross-reactivity with human IgG at 1/5000 dilution

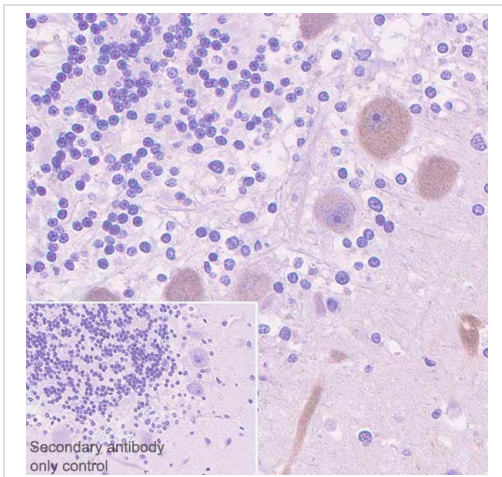
**Predicted band size:** 61 kDa

**Observed band size:** 61 kDa



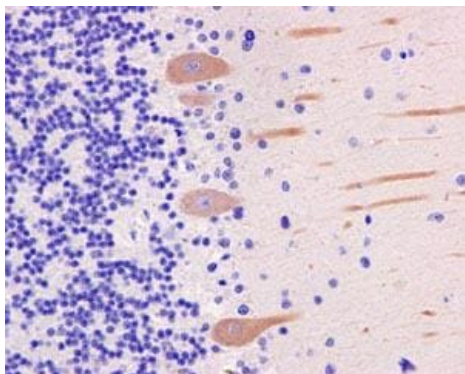
Immunohistochemistry (Formalin/PFA-fixed paraffin-embedded sections) analysis of mouse cerebrum tissue sections labeling PDE1B with purified ab182565 at 1/2000 dilution (0.47  $\mu\text{g/ml}$ ). Heat mediated antigen retrieval using Bond™ Epitope Retrieval Solution 1 (pH 6.0). Rabbit specific IHC polymer detection kit HRP/DAB (ab209101) was used as the secondary antibody. Negative control: PBS instead of the primary antibody. Hematoxylin was used as a counterstain.

Immunohistochemistry (Formalin/PFA-fixed paraffin-embedded sections) - Anti-PDE1B antibody [EPR12293(2)] (ab182565)



Immunohistochemistry (Formalin/PFA-fixed paraffin-embedded sections) analysis of human cerebellum tissue sections labeling PDE1B with purified ab182565 at 1/100 dilution (9.43  $\mu\text{g/ml}$ ). Heat mediated antigen retrieval using Bond™ Epitope Retrieval Solution 1 (pH 6.0). Rabbit specific IHC polymer detection kit HRP/DAB (ab209101) was used as the secondary antibody. Negative control: PBS instead of the primary antibody. Hematoxylin was used as a counterstain.

Immunohistochemistry (Formalin/PFA-fixed paraffin-embedded sections) - Anti-PDE1B antibody [EPR12293(2)] (ab182565)



Immunohistochemistry (Formalin/PFA-fixed paraffin-embedded sections) - Anti-PDE1B antibody [EPR12293(2)] (ab182565)

Immunohistochemical analysis of paraffin-embedded Human cerebellum tissue labeling PDE1B with unpurified ab182565 at 1/100 dilution followed by prediluted HRP Polymer for Rabbit IgG. Counter stained with Hematoxylin.

Perform heat mediated antigen retrieval with EDTA buffer pH 9 before commencing with IHC staining protocol.

### Why choose a recombinant antibody?



**Research with confidence**  
Consistent and reproducible results



**Long-term and scalable supply**  
Recombinant technology



**Success from the first experiment**  
Confirmed specificity



**Ethical standards compliant**  
Animal-free production

Anti-PDE1B antibody [EPR12293(2)] (ab182565)

**Please note:** All products are "FOR RESEARCH USE ONLY. NOT FOR USE IN DIAGNOSTIC PROCEDURES"

### Our Abpromise to you: Quality guaranteed and expert technical support

- Replacement or refund for products not performing as stated on the datasheet
- Valid for 12 months from date of delivery
- Response to your inquiry within 24 hours
- We provide support in Chinese, English, French, German, Japanese and Spanish
- Extensive multi-media technical resources to help you
- We investigate all quality concerns to ensure our products perform to the highest standards

If the product does not perform as described on this datasheet, we will offer a refund or replacement. For full details of the Abpromise,

please visit <https://www.abcam.com/abpromise> or contact our technical team.

## **Terms and conditions**

---

- Guarantee only valid for products bought direct from Abcam or one of our authorized distributors