


Product datasheet

Anti-PDE1C/PDE1 antibody ab61821

1 Image

Overview

<b>Product name</b>	Anti-PDE1C/PDE1 antibody
<b>Description</b>	Rabbit polyclonal to PDE1C/PDE1
<b>Host species</b>	Rabbit
<b>Tested applications</b>	<b>Suitable for:</b> IHC-P
<b>Species reactivity</b>	<b>Reacts with:</b> Human <b>Predicted to work with:</b> Mouse, Rat 
<b>Immunogen</b>	Synthetic peptide corresponding to Human PDE1C/PDE1 (C terminal) conjugated to keyhole limpet haemocyanin.
<b>Positive control</b>	Thyroid
<b>General notes</b>	This product was previously labelled as PDE1C

Properties

<b>Form</b>	Liquid
<b>Storage instructions</b>	Shipped at 4°C. Store at +4°C short term (1-2 weeks). Upon delivery aliquot. Store at -20°C or -80°C. Avoid freeze / thaw cycle.
<b>Storage buffer</b>	pH: 7.70 Preservative: 0.1% Sodium azide Constituent: PBS
<b>Purity</b>	Immunogen affinity purified
<b>Clonality</b>	Polyclonal
<b>Isotype</b>	IgG

Applications

Our [Abpromise guarantee](#) covers the use of **ab61821** in the following tested applications.

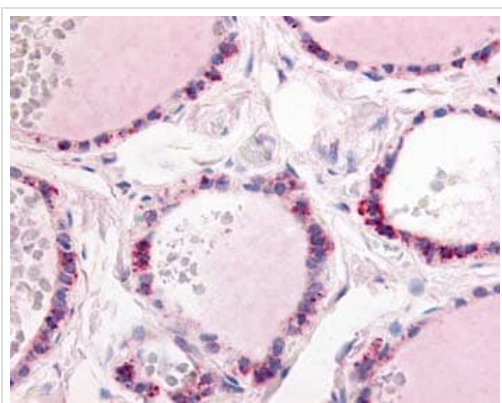
The application notes include recommended starting dilutions; optimal dilutions/concentrations should be determined by the end user.

Application	Abreviews	Notes
IHC-P		Use a concentration of 5 µg/ml.

## Target

<b>Function</b>	Cyclic nucleotide phosphodiesterase with a dual-specificity for the second messengers cAMP and cGMP, which are key regulators of many important physiological processes. Has a high affinity for both cAMP and cGMP.
<b>Tissue specificity</b>	Expressed in several tissues, including brain and heart.
<b>Sequence similarities</b>	Belongs to the cyclic nucleotide phosphodiesterase family. PDE1 subfamily.

## Images



ab61821, at 5µg/ml, staining human PDE1C/PDE1 in thyroid tissue by immunohistochemistry. Formalin-fixed paraffin-embedded tissue.

Immunohistochemistry (Formalin/PFA-fixed paraffin-embedded sections) - Anti-PDE1C/PDE1 antibody (ab61821)

**Please note:** All products are "FOR RESEARCH USE ONLY. NOT FOR USE IN DIAGNOSTIC PROCEDURES"

## Our Abpromise to you: Quality guaranteed and expert technical support

- Replacement or refund for products not performing as stated on the datasheet
- Valid for 12 months from date of delivery
- Response to your inquiry within 24 hours
- We provide support in Chinese, English, French, German, Japanese and Spanish
- Extensive multi-media technical resources to help you
- We investigate all quality concerns to ensure our products perform to the highest standards

If the product does not perform as described on this datasheet, we will offer a refund or replacement. For full details of the Abpromise, please visit <https://www.abcam.com/abpromise> or contact our technical team.

## Terms and conditions

---

- Guarantee only valid for products bought direct from Abcam or one of our authorized distributors