

Product datasheet

Anti-PDE6C antibody ab198744

1 References 1 Image

Overview

<b>Product name</b>	Anti-PDE6C antibody
<b>Description</b>	Rabbit polyclonal to PDE6C
<b>Host species</b>	Rabbit
<b>Tested applications</b>	<b>Suitable for:</b> WB
<b>Species reactivity</b>	<b>Reacts with:</b> Human
<b>Immunogen</b>	Synthetic peptide within Human PDE6C (N terminal). The exact sequence is proprietary. Database link: <a href="#">P51160</a>
<b>Positive control</b>	A172 cell lysate

Properties

<b>Form</b>	Liquid
<b>Storage instructions</b>	Shipped at 4°C. Store at +4°C short term (1-2 weeks). Upon delivery aliquot. Store at -20°C long term. Avoid freeze / thaw cycle.
<b>Storage buffer</b>	pH: 7.3 Preservative: 0.05% Sodium azide Constituents: 50% Glycerol, 49% PBS
<b>Purity</b>	Immunogen affinity purified
<b>Clonality</b>	Polyclonal
<b>Isotype</b>	IgG

Applications

Our [Abpromise guarantee](#) covers the use of **ab198744** in the following tested applications.

The application notes include recommended starting dilutions; optimal dilutions/concentrations should be determined by the end user.

Application	Abreviews	Notes
WB		1/500 - 1/2000. Predicted molecular weight: 99 kDa.

## Target

---

### Involvement in disease

Defects in PDE6C are the cause of cone dystrophy type 4 (COD4) [MIM:613093]. An early-onset cone dystrophy. Cone dystrophies are retinal dystrophies characterized by progressive degeneration of the cone photoreceptors with preservation of rod function, as indicated by electroretinogram. However, some rod involvement may be present in some cone dystrophies, particularly at late stage. Affected individuals suffer from photophobia, loss of visual acuity, color vision and central visual field. Another sign is the absence of macular lesions for many years. Cone dystrophies are distinguished from the cone-rod dystrophies in which some loss of peripheral vision also occurs.

### Sequence similarities

Belongs to the cyclic nucleotide phosphodiesterase family.  
Contains 2 GAF domains.

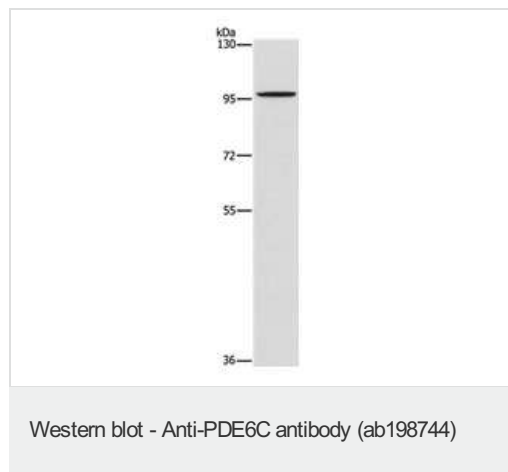
### Cellular localization

Cell membrane.

---

## Images

---



Anti-PDE6C antibody (ab198744) at 1/1400 dilution + A172 cell lysate at 40 µg

**Predicted band size:** 99 kDa

**Exposure time:** 10 seconds

**Please note:** All products are "FOR RESEARCH USE ONLY. NOT FOR USE IN DIAGNOSTIC PROCEDURES"

## Our Abpromise to you: Quality guaranteed and expert technical support

---

- Replacement or refund for products not performing as stated on the datasheet
- Valid for 12 months from date of delivery
- Response to your inquiry within 24 hours
- We provide support in Chinese, English, French, German, Japanese and Spanish
- Extensive multi-media technical resources to help you
- We investigate all quality concerns to ensure our products perform to the highest standards

If the product does not perform as described on this datasheet, we will offer a refund or replacement. For full details of the Abpromise, please visit <https://www.abcam.com/abpromise> or contact our technical team.

## Terms and conditions

---

- Guarantee only valid for products bought direct from Abcam or one of our authorized distributors