

Product datasheet

Anti-PDLIM1/CLP36 antibody [EPR7186(B)] ab129015

Recombinant **RabMAb**

[1 References](#) [5 Images](#)

Overview

Product name	Anti-PDLIM1/CLP36 antibody [EPR7186(B)]
Description	Rabbit monoclonal [EPR7186(B)] to PDLIM1/CLP36
Host species	Rabbit
Tested applications	Suitable for: Flow Cyt (Intra), WB, ICC/IF Unsuitable for: IHC-P
Species reactivity	Reacts with: Mouse, Rat, Human
Immunogen	Synthetic peptide within Human PDLIM1/CLP36 aa 50-150. The exact sequence is proprietary.
Positive control	Human heart, L6, 293T, Caco 2, Saos 2, C2C12, Rat lung and Mouse lung lysates; Saos 2 cells. ICC/IF: 293T cells
General notes	<p>This product is a recombinant monoclonal antibody, which offers several advantages including:</p> <ul style="list-style-type: none"> - High batch-to-batch consistency and reproducibility - Improved sensitivity and specificity - Long-term security of supply - Animal-free production <p>For more information see here.</p> <p>Our RabMAb[®] technology is a patented hybridoma-based technology for making rabbit monoclonal antibodies. For details on our patents, please refer to RabMAb[®] patents.</p> <p>We are constantly working hard to ensure we provide our customers with best in class antibodies. As a result of this work we are pleased to now offer this antibody in purified format. We are in the process of updating our datasheets. The purified format is designated 'PUR' on our product labels. If you have any questions regarding this update, please contact our Scientific Support team.</p>

Properties

Form	Liquid
Storage instructions	Shipped at 4°C. Store at -20°C. Stable for 12 months at -20°C.
Dissociation constant (K_D)	K _D = 9.54 x 10 ⁻¹¹ M





[Learn more about K_D](#)

Storage buffer	pH: 7.20 Preservative: 0.01% Sodium azide Constituents: 9% PBS, 40% Glycerol (glycerin, glycerine), 0.05% BSA, 50% Tissue culture supernatant
Purity	Protein A purified
Clonality	Monoclonal
Clone number	EPR7186(B)
Isotype	IgG

Applications

The Abpromise guarantee Our [Abpromise guarantee](#) covers the use of ab129015 in the following tested applications. The application notes include recommended starting dilutions; optimal dilutions/concentrations should be determined by the end user.

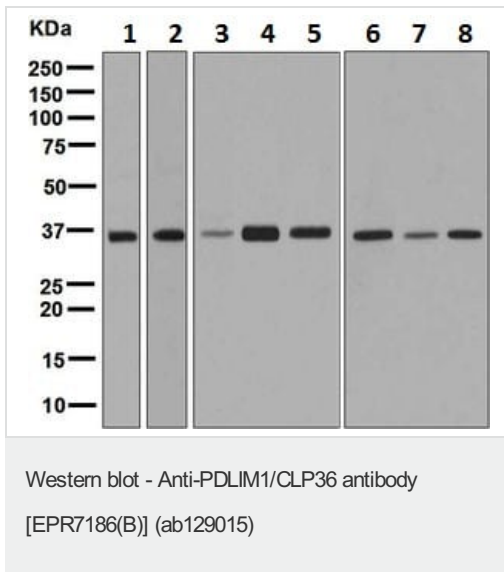
Application	Abreviews	Notes
Flow Cyt (Intra)		1/100 - 1/500. ab172730 - Rabbit monoclonal IgG, is suitable for use as an isotype control with this antibody.
WB		1/1000 - 1/10000. Detects a band of approximately 36 kDa (predicted molecular weight: 36 kDa).
ICC/IF		1/100.

Application notes Is unsuitable for IHC-P.

Target

Function	Cytoskeletal protein that may act as an adapter that brings other proteins (like kinases) to the cytoskeleton.
Tissue specificity	Strongly expressed in the heart and skeletal muscle, moderately expressed in the spleen, small intestine, colon, placenta, and lung. A lower level expression is seen in liver, thymus, kidney, prostate and pancreas and is not found in the brain, testis, ovary, and peripheral blood leukocytes.
Sequence similarities	Contains 1 LIM zinc-binding domain. Contains 1 PDZ (DHR) domain.
Cellular localization	Cytoplasm. Cytoplasm > cytoskeleton. Associates with the actin stress fibers.

Images



All lanes : Anti-PDLIM1/CLP36 antibody [EPR7186(B)] (ab129015) at 1/1000 dilution

Lane 1 : Human heart cell lysate

Lane 2 : L6 cell lysate

Lane 3 : 293T cell lysate

Lane 4 : Caco 2 cell lysate

Lane 5 : Saos 2 cell lysate

Lane 6 : C2C12 cell lysate

Lane 7 : Rat lung cell lysate

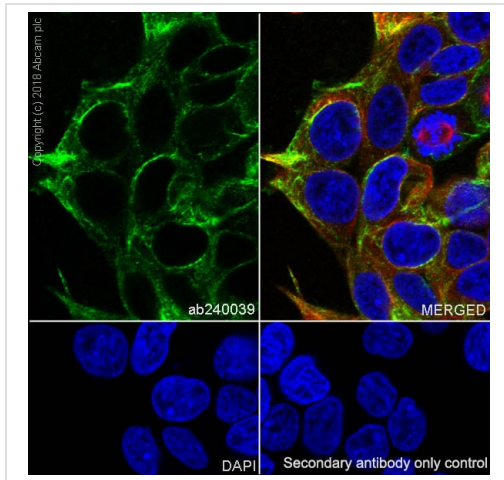
Lane 8 : Mouse lung cell lysate

Lysates/proteins at 10 µg per lane.

Secondary

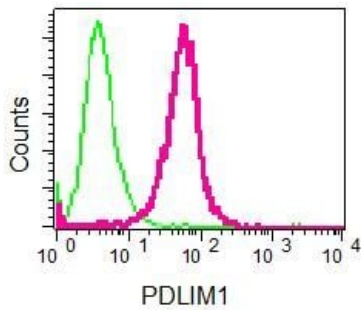
All lanes : HRP labelled Goat anti-Rabbit IgG at 1/2000 dilution

Predicted band size: 36 kDa



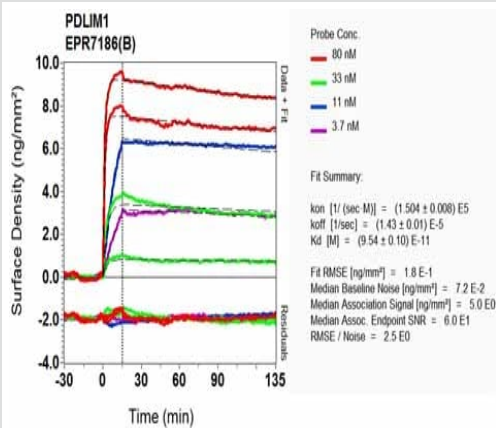
Immunocytochemistry/ Immunofluorescence analysis of 293T (human embryonic kidney epithelial cell) cells labeling PDLIM1/CLP36 with purified ab129015 at 1/100 dilution (10 µg/mL). Cells were fixed in 4% Paraformaldehyde and permeabilized with 0.1% tritonX-100. Cells were counterstained with [ab195889](#) Anti-alpha Tubulin antibody [DM1A] - Microtubule Marker (Alexa Fluor® 594) 1/200 (2.5 µg/mL). Goat anti rabbit IgG (Alexa Fluor® 488, [ab150077](#)) was used as the secondary antibody at 1/1000 (2 µg/mL) dilution. DAPI (blue) was used as nuclear counterstain. [ab195889](#) Anti-alpha Tubulin antibody [DM1A] - Microtubule Marker (Alexa Fluor® 594) 1/200 (2.5 µg/mL) was used as the secondary antibody only control.

Immunocytochemistry/ Immunofluorescence - Anti-PDLIM1/CLP36 antibody [EPR7186(B)] (ab129015)



Flow Cytometry (Intracellular) - Anti-PDLIM1/CLP36 antibody [EPR7186(B)] (ab129015)

ab129015, at 1/100 dilution, staining PDLIM1/CLP36 in permeabilized Saos 2 cells by intracellular flow cytometry or a Rabbit IgG negative control (green).



OI-RD Scanning - Anti-PDLIM1/CLP36 antibody [EPR7186(B)] (ab129015)

Equilibrium disassociation constant (K_D)

Learn more about K_D

[Click here to learn more about \$K_D\$](#)

Why choose a recombinant antibody?



Research with confidence
Consistent and reproducible results



Long-term and scalable supply
Recombinant technology



Success from the first experiment
Confirmed specificity



Ethical standards compliant
Animal-free production

Anti-PDLIM1/CLP36 antibody [EPR7186(B)]
(ab129015)

Please note: All products are "FOR RESEARCH USE ONLY. NOT FOR USE IN DIAGNOSTIC PROCEDURES"

Our Abpromise to you: Quality guaranteed and expert technical support

- Replacement or refund for products not performing as stated on the datasheet
- Valid for 12 months from date of delivery
- Response to your inquiry within 24 hours
- We provide support in Chinese, English, French, German, Japanese and Spanish
- Extensive multi-media technical resources to help you
- We investigate all quality concerns to ensure our products perform to the highest standards

If the product does not perform as described on this datasheet, we will offer a refund or replacement. For full details of the Abpromise, please visit <https://www.abcam.com/abpromise> or contact our technical team.

Terms and conditions

- Guarantee only valid for products bought direct from Abcam or one of our authorized distributors