


Product datasheet

Anti-PDLIM7 antibody ab86065

1 References 2 Images

Overview

<b>Product name</b>	Anti-PDLIM7 antibody
<b>Description</b>	Rabbit polyclonal to PDLIM7
<b>Host species</b>	Rabbit
<b>Tested applications</b>	<b>Suitable for:</b> WB, IP
<b>Species reactivity</b>	<b>Reacts with:</b> Human <b>Predicted to work with:</b> Horse, Cow, Dog, Chimpanzee, Ferret, Rhesus monkey, Gorilla, Bat 
<b>Immunogen</b>	Synthetic peptide corresponding to a region between amino acids 125 and 175 of Human PDLIM7 (NP_005442.2)
<b>Positive control</b>	Hela cell lysate

Properties

<b>Form</b>	Liquid
<b>Storage instructions</b>	Shipped at 4°C. Upon delivery aliquot and store at -20°C. Avoid freeze / thaw cycles.
<b>Storage buffer</b>	pH: 6.8 Preservative: 0.09% Sodium azide Constituents: 0.1% BSA, Tris buffered saline
<b>Purity</b>	Immunogen affinity purified
<b>Clonality</b>	Polyclonal
<b>Isotype</b>	IgG

Applications

Our [Abpromise guarantee](#) covers the use of **ab86065** in the following tested applications.

The application notes include recommended starting dilutions; optimal dilutions/concentrations should be determined by the end user.

Application	Abreviews	Notes
WB		1/2000 - 1/10000. Predicted molecular weight: 50 kDa.

Application	Abreviews	Notes
IP		Use at 2-5 µg/mg of lysate.

## Target

**Function** May function as a scaffold on which the coordinated assembly of proteins can occur. May play a role as an adapter that, via its PDZ domain, localizes LIM-binding proteins to actin filaments of both skeletal muscle and nonmuscle tissues. Involved in both of the two fundamental mechanisms of bone formation, direct bone formation (e.g. embryonic flat bones mandible and cranium), and endochondral bone formation (e.g. embryonic long bone development). Plays a role during fracture repair. Involved in BMP6 signaling pathway.

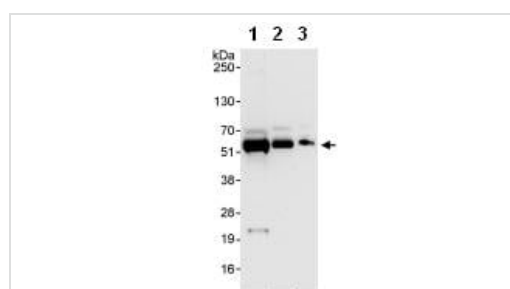
**Tissue specificity** Isoform 1 and isoform 2 are expressed ubiquitously, however, isoform 2 predominates in skeletal muscle, isoform 1 is more abundant in lung, spleen, leukocytes and fetal liver.

**Sequence similarities** Contains 3 LIM zinc-binding domains.  
Contains 1 PDZ (DHR) domain.

**Domain** The LIM zinc-binding 2 (LIM 2) domain interacts with TBX4.  
The LIM zinc-binding 3 (LIM 3) domain provides the structural basis for recognition of tyrosine-containing tight turn structures. This domain is necessary and sufficient for interaction with TBX5. Anchored to cell periphery via its N-terminal PDZ domain.

**Cellular localization** Cytoplasm. Cytoplasm > cytoskeleton. Colocalizes with RET to the cell periphery and in some cytoskeletal components. Colocalizes with TPM2 near the Z line in muscle. Co-localizes with TBX4 and TBX5 to actin filaments.

## Images



Western blot - Anti-PDLIM7 antibody (ab86065)

**All lanes :** Anti-PDLIM7 antibody (ab86065) at 0.04 µg/ml

**Lane 1 :** HeLa whole cell lysate at 50 µg

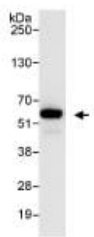
**Lane 2 :** HeLa whole cell lysate at 15 µg

**Lane 3 :** HeLa whole cell lysate at 5 µg

Developed using the ECL technique.

**Predicted band size:** 50 kDa

**Exposure time:** 30 seconds



Immunoprecipitation - Anti-PDLIM7 antibody  
(ab86065)

Detection of PDLIM7 by Western blot of Immunoprecipitate.  
ab86065, at 1  $\mu\text{g/ml}$ , staining PDLIM7 in HeLa whole cell lysate immunoprecipitated using ab86065 at 3  $\mu\text{g/mg}$  lysate (1 mg/IP; 20% of IP loaded/lane).

Detection: Chemiluminescence with an exposure time of 3 seconds.

**Please note:** All products are "FOR RESEARCH USE ONLY. NOT FOR USE IN DIAGNOSTIC PROCEDURES"

### Our Abpromise to you: Quality guaranteed and expert technical support

---

- Replacement or refund for products not performing as stated on the datasheet
- Valid for 12 months from date of delivery
- Response to your inquiry within 24 hours
  
- We provide support in Chinese, English, French, German, Japanese and Spanish
- Extensive multi-media technical resources to help you
- We investigate all quality concerns to ensure our products perform to the highest standards

If the product does not perform as described on this datasheet, we will offer a refund or replacement. For full details of the Abpromise, please visit <https://www.abcam.com/abpromise> or contact our technical team.

### Terms and conditions

---

- Guarantee only valid for products bought direct from Abcam or one of our authorized distributors