


Product datasheet

Anti-PDP1/PDP antibody ab198261

★★★★★ 1 Abreviews 2 Images

Overview

<b>Product name</b>	Anti-PDP1/PDP antibody
<b>Description</b>	Rabbit polyclonal to PDP1/PDP
<b>Host species</b>	Rabbit
<b>Tested applications</b>	<b>Suitable for:</b> IHC-P, WB
<b>Species reactivity</b>	<b>Reacts with:</b> Human <b>Predicted to work with:</b> Mouse, Rat 
<b>Immunogen</b>	Fusion protein corresponding to Human PDP1/PDP (C terminal). The identity of the protein fusion partner is GST (BC047619). Database link: <a href="#">Q9P0J1</a>
<b>Positive control</b>	Human bladder carcinoma tissue lysate; Human thyroid cancer tissue.
<b>General notes</b>	This product was previously labelled as PDP1

Properties

<b>Form</b>	Liquid
<b>Storage instructions</b>	Shipped at 4°C. Store at +4°C short term (1-2 weeks). Upon delivery aliquot. Store at -20°C long term. Avoid freeze / thaw cycle.
<b>Storage buffer</b>	pH: 7.3 Preservative: 0.05% Sodium azide Constituents: 49% PBS, 50% Glycerol
<b>Purity</b>	Immunogen affinity purified
<b>Clonality</b>	Polyclonal
<b>Isotype</b>	IgG

Applications

Our [Abpromise guarantee](#) covers the use of **ab198261** in the following tested applications.

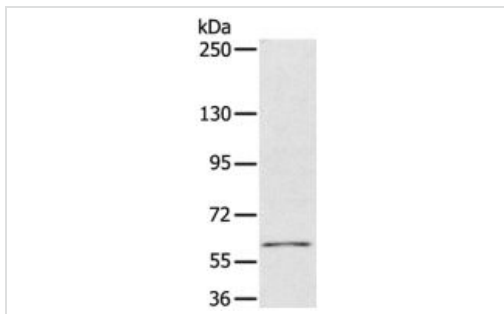
The application notes include recommended starting dilutions; optimal dilutions/concentrations should be determined by the end user.

Application	Abreviews	Notes
IHC-P		1/25 - 1/100.
WB	★★★★★	1/200 - 1/1000. Predicted molecular weight: 61 kDa.

## Target

<b>Function</b>	Catalyzes the dephosphorylation and concomitant reactivation of the alpha subunit of the E1 component of the pyruvate dehydrogenase complex.
<b>Involvement in disease</b>	Defects in PDP1 are the cause of pyruvate dehydrogenase phosphatase deficiency (PDP deficiency) [MIM:608782]. PDP deficiency results in lactic acidosis leading to neurological dysfunction.
<b>Sequence similarities</b>	Belongs to the PP2C family.
<b>Cellular localization</b>	Mitochondrion matrix.

## Images

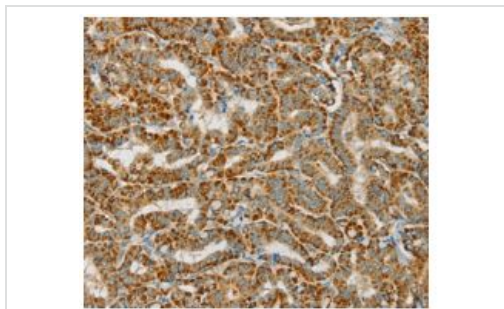


Western blot - Anti-PDP1/PDP antibody (ab198261)

Anti-PDP1/PDP antibody (ab198261) at 1/300 dilution + Human bladder carcinoma tissue lysate at 40 µg

**Predicted band size:** 61 kDa

Gel: 6% SDS-PAGE



Immunohistochemistry (Formalin/PFA-fixed paraffin-embedded sections) - Anti-PDP1/PDP antibody (ab198261)

Immunohistochemical analysis of paraffin-embedded Human thyroid cancer tissue labeling PDP1/PDP with ab198261 at 1/25 dilution.

**Please note:** All products are "FOR RESEARCH USE ONLY. NOT FOR USE IN DIAGNOSTIC PROCEDURES"

## **Our Abpromise to you: Quality guaranteed and expert technical support**

---

- Replacement or refund for products not performing as stated on the datasheet
- Valid for 12 months from date of delivery
- Response to your inquiry within 24 hours
  
- We provide support in Chinese, English, French, German, Japanese and Spanish
- Extensive multi-media technical resources to help you
- We investigate all quality concerns to ensure our products perform to the highest standards

If the product does not perform as described on this datasheet, we will offer a refund or replacement. For full details of the Abpromise, please visit <https://www.abcam.com/abpromise> or contact our technical team.

## **Terms and conditions**

---

- Guarantee only valid for products bought direct from Abcam or one of our authorized distributors