



Product datasheet

Anti-PDZ-RhoGEF antibody ab223714

5 Images

Overview

<b>Product name</b>	Anti-PDZ-RhoGEF antibody
<b>Description</b>	Rabbit polyclonal to PDZ-RhoGEF
<b>Host species</b>	Rabbit
<b>Tested applications</b>	<b>Suitable for:</b> IHC-P, WB
<b>Species reactivity</b>	<b>Reacts with:</b> Human
<b>Immunogen</b>	<p>Recombinant fragment corresponding to Human PDZ-RhoGEF aa 383-527. Sequence:</p> <p>LQAEIDSRLRNSEDARGVLC EAQEAAMPEIQEQIHDYRTK RTLGLGSLYG ENDLLDLGDPLRERQVAEKQLAALGDILSKYEEDRSAP MDFALNTYMSH AGIRLREARPSNTAEKAQSAPDKDKWLPFFPKTKKSSNS KKEQDA</p> <p>Database link: <a href="#">O15085</a></p> <p style="text-align: right;"> <a href="#">Run BLAST with</a>       <a href="#">Run BLAST with</a></p>
<b>Positive control</b>	IHC-P: Human testis, colon, lymph node and cerebral cortex tissue. WB: ARHGEF11 over-expression HEK-293T whole cell lysates.
<b>General notes</b>	<p>Previously labelled as ARHGEF11.</p> <p>Reproducibility is key to advancing scientific discovery and accelerating scientists' next breakthrough.</p> <p>Abcam is leading the way with our range of recombinant antibodies, knockout-validated antibodies and knockout cell lines, all of which support improved reproducibility.</p> <p>We are also planning to innovate the way in which we present recommended applications and species on our product datasheets, so that only applications &amp; species that have been tested in our own labs, our suppliers or by selected trusted collaborators are covered by our Abpromise™ guarantee.</p> <p>In preparation for this, we have started to update the applications &amp; species that this product is Abpromise guaranteed for.</p> <p>We are also updating the applications &amp; species that this product has been "predicted to work with," however this information is not covered by our Abpromise guarantee.</p> <p>Applications &amp; species from publications and Abreviews that have not been tested in our own</p>

labs or in those of our suppliers are not covered by the Abpromise guarantee.

Please check that this product meets your needs before purchasing. If you have any questions, special requirements or concerns, please send us an inquiry and/or contact our Support team ahead of purchase. Recommended alternatives for this product can be found below, as well as customer reviews and Q&As.

## Properties

---

<b>Form</b>	Liquid
<b>Storage instructions</b>	Shipped at 4°C. Store at +4°C short term (1-2 weeks). Upon delivery aliquot. Store at -20°C long term. Avoid freeze / thaw cycle.
<b>Storage buffer</b>	pH: 7.20 Preservative: 0.02% Sodium azide Constituents: 40% Glycerol (glycerin, glycerine), PBS
<b>Purity</b>	Immunogen affinity purified
<b>Clonality</b>	Polyclonal
<b>Isotype</b>	IgG

## Applications

---

Our [Abpromise guarantee](#) covers the use of **ab223714** in the following tested applications.

The application notes include recommended starting dilutions; optimal dilutions/concentrations should be determined by the end user.

Application	Abreviews	Notes
IHC-P		1/50 - 1/200. Perform heat mediated antigen retrieval with citrate buffer pH 6 before commencing with IHC staining protocol.
WB		Use a concentration of 0.04 - 0.4 µg/ml. Predicted molecular weight: 168 kDa.

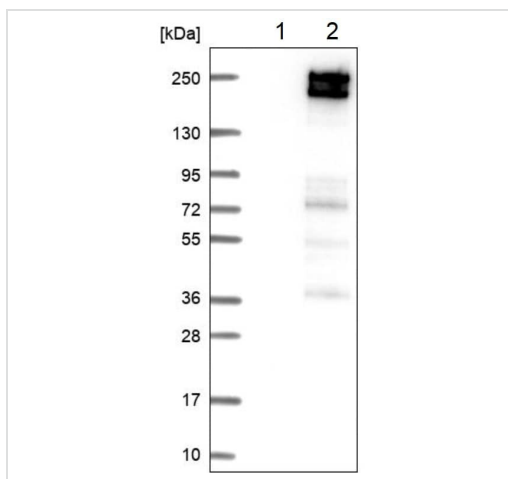
## Target

---

<b>Function</b>	May play a role in the regulation of RhoA GTPase by guanine nucleotide-binding alpha-12 (GNA12) and alpha-13 (GNA13). Acts as guanine nucleotide exchange factor (GEF) for RhoA GTPase and may act as GTPase-activating protein (GAP) for GNA12 and GNA13.
<b>Tissue specificity</b>	Ubiquitously expressed.
<b>Sequence similarities</b>	Contains 1 DH (DBL-homology) domain. Contains 1 PDZ (DHR) domain. Contains 1 PH domain. Contains 1 RGSL (RGS-like) domain.
<b>Domain</b>	The poly-Pro region is essential for plasma membrane localization upon stimulation.
<b>Cellular localization</b>	Cytoplasm. Membrane. Translocated to the membrane upon stimulation.

---

## Images



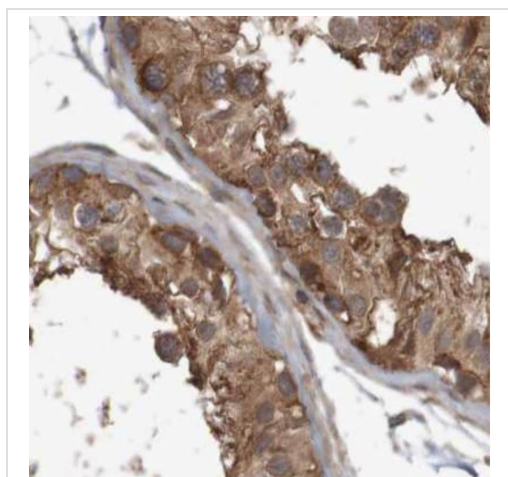
Western blot - Anti-PDZ-RhoGEF antibody (ab223714)

**All lanes :** Anti-PDZ-RhoGEF antibody (ab223714) at 0.4 µg/ml

**Lane 1 :** Only vector transfected - HEK-293T (Human epithelial cell line from embryonic kidney transformed with large T antigen) whole cell lysate

**Lane 2 :** ARHGEF11 over-expression - HEK-293T whole cell lysate, Co-expressed with a C-terminal myc-DDK tag (~3.1 kDa)

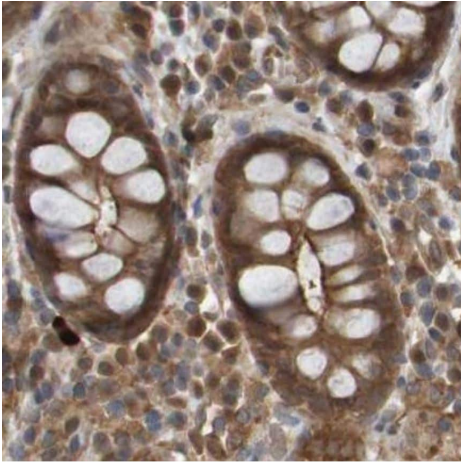
**Predicted band size:** 168 kDa



Immunohistochemistry (Formalin/PFA-fixed paraffin-embedded sections) - Anti-PDZ-RhoGEF antibody (ab223714)

Immunohistochemical analysis of human testis tissue labeling PDZ-RhoGEF with ab223714 at a 1/50 dilution.

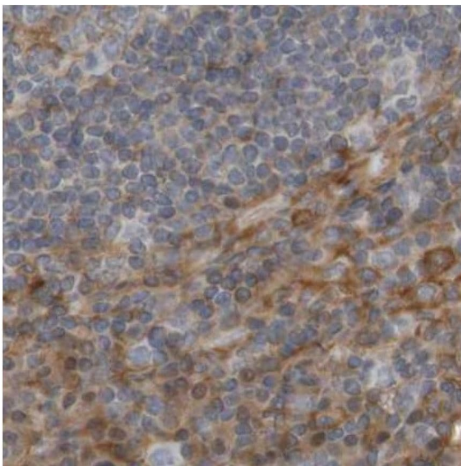
Performed heat mediated antigen retrieval with citrate buffer pH 6 before commencing with IHC staining protocol.



Immunohistochemistry (Formalin/PFA-fixed paraffin-embedded sections) - Anti-PDZ-RhoGEF antibody (ab223714)

Immunohistochemical analysis of human colon tissue labeling PDZ-RhoGEF with ab223714 at a 1/50 dilution.

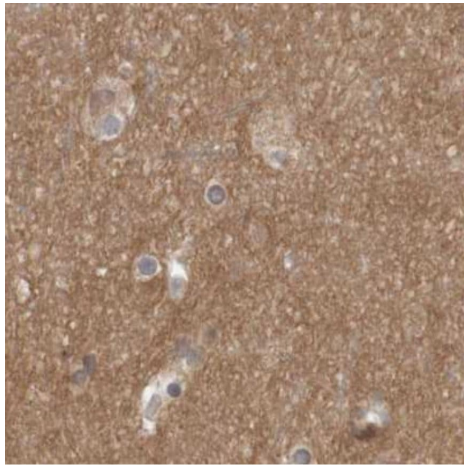
Performed heat mediated antigen retrieval with citrate buffer pH 6 before commencing with IHC staining protocol.



Immunohistochemistry (Formalin/PFA-fixed paraffin-embedded sections) - Anti-PDZ-RhoGEF antibody (ab223714)

Immunohistochemical analysis of human lymph node tissue labeling PDZ-RhoGEF with ab223714 at a 1/50 dilution.

Performed heat mediated antigen retrieval with citrate buffer pH 6 before commencing with IHC staining protocol.



Immunohistochemical analysis of human cerebral cortex tissue labeling PDZ-RhoGEF with ab223714 at a 1/50 dilution.

Performed heat mediated antigen retrieval with citrate buffer pH 6 before commencing with IHC staining protocol.

Immunohistochemistry (Formalin/PFA-fixed paraffin-embedded sections) - Anti-PDZ-RhoGEF antibody (ab223714)

**Please note:** All products are "FOR RESEARCH USE ONLY. NOT FOR USE IN DIAGNOSTIC PROCEDURES"

#### **Our Abpromise to you: Quality guaranteed and expert technical support**

---

- Replacement or refund for products not performing as stated on the datasheet
- Valid for 12 months from date of delivery
- Response to your inquiry within 24 hours
- We provide support in Chinese, English, French, German, Japanese and Spanish
- Extensive multi-media technical resources to help you
- We investigate all quality concerns to ensure our products perform to the highest standards

If the product does not perform as described on this datasheet, we will offer a refund or replacement. For full details of the Abpromise, please visit <https://www.abcam.com/abpromise> or contact our technical team.

#### **Terms and conditions**

---

- Guarantee only valid for products bought direct from Abcam or one of our authorized distributors