

Product datasheet

PE Anti-CD1 antibody [76-7-4] ab25599

2 References 1 Image

Overview

Product name	PE Anti-CD1 antibody [76-7-4]
Description	PE Mouse monoclonal [76-7-4] to CD1
Host species	Mouse
Conjugation	PE. Ex: 488nm, Em: 575nm
Tested applications	Suitable for: Flow Cyt
Immunogen	Tissue, cells or virus corresponding to CD1. Fresh dd miniature swine thymocytes
General notes	<p>The Life Science industry has been in the grips of a reproducibility crisis for a number of years. Abcam is leading the way in addressing this with our range of recombinant monoclonal antibodies and knockout edited cell lines for gold-standard validation. Please check that this product meets your needs before purchasing.</p> <p>If you have any questions, special requirements or concerns, please send us an inquiry and/or contact our Support team ahead of purchase. Recommended alternatives for this product can be found below, along with publications, customer reviews and Q&As</p>

Properties

Form	Liquid
Storage instructions	Shipped at 4°C. Store at +4°C.
Storage buffer	<p>pH: 7.3</p> <p>Preservative: 0.09% Sodium azide</p> <p>Constituents: PBS, 16% Sucrose</p> <p>Also contains a stabilizing agent.</p>
Purity	Affinity purified
Clonality	Monoclonal
Clone number	76-7-4
Isotype	IgG2a
Light chain type	kappa

Applications

The Abpromise guarantee

Our [Abpromise guarantee](#) covers the use of ab25599 in the following tested applications.

The application notes include recommended starting dilutions; optimal dilutions/concentrations should be determined by the end user.

Application	Abreviews	Notes
Flow Cyt		Use 0.2µg for 10 ⁶ cells.

Target

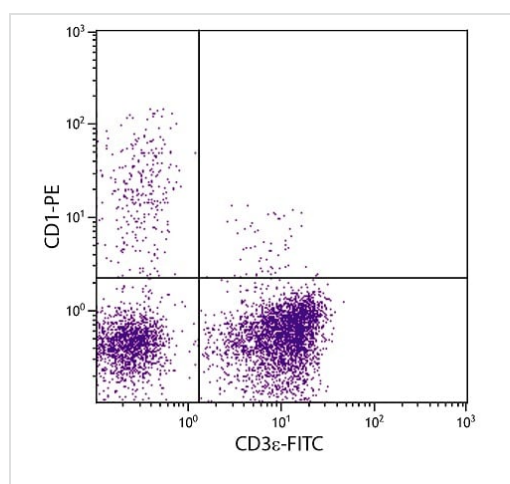
Relevance

All CD1 molecules, except CD1e, are cell surface glycoproteins that are structurally related to the MHC molecules, however, in distinction, CD1 proteins are essentially non polymorphic. CD1 has considerable structural homology with both MHC class I and class II molecules, and CD1 molecules are involved in T cell activation. In contrast to MHC, however, CD1 molecules appear to present predominantly non peptide molecules originating from lipids and glycolipids.

Cellular localization

Cell Membrane. Type I membrane protein.

Images



Flow cytometry analysis staining CD1 in cells using ab25599 at a dilution of 0.1 µg/10⁶ cells.

Flow Cytometry - PE Anti-CD1 antibody [76-7-4]
(ab25599)

Please note: All products are "FOR RESEARCH USE ONLY. NOT FOR USE IN DIAGNOSTIC PROCEDURES"

Our Abpromise to you: Quality guaranteed and expert technical support

- Replacement or refund for products not performing as stated on the datasheet
- Valid for 12 months from date of delivery
- Response to your inquiry within 24 hours
- We provide support in Chinese, English, French, German, Japanese and Spanish
- Extensive multi-media technical resources to help you

- We investigate all quality concerns to ensure our products perform to the highest standards

If the product does not perform as described on this datasheet, we will offer a refund or replacement. For full details of the Abpromise, please visit <https://www.abcam.com/abpromise> or contact our technical team.

Terms and conditions

- Guarantee only valid for products bought direct from Abcam or one of our authorized distributors