

Product datasheet

PE Anti-CD20 antibody [2H7] ab112461

1 Image

Overview

Product name	PE Anti-CD20 antibody [2H7]
Description	PE Mouse monoclonal [2H7] to CD20
Host species	Mouse
Conjugation	PE. Ex: 488nm, Em: 575nm
Tested applications	Suitable for: Flow Cyt
Species reactivity	Reacts with: Human, Non human primates
Immunogen	Human tonsillar B cells.
Positive control	Flow Cyt: Human peripheral blood lymphocytes/
General notes	<p>The Life Science industry has been in the grips of a reproducibility crisis for a number of years. Abcam is leading the way in addressing this with our range of recombinant monoclonal antibodies and knockout edited cell lines for gold-standard validation. Please check that this product meets your needs before purchasing.</p> <p>If you have any questions, special requirements or concerns, please send us an inquiry and/or contact our Support team ahead of purchase. Recommended alternatives for this product can be found below, along with publications, customer reviews and Q&As</p>

Properties

Form	Liquid
Storage instructions	Shipped at 4°C. Store at +4°C. Do Not Freeze. Store In the Dark.
Storage buffer	<p>pH: 7.20</p> <p>Preservative: 0.09% Sodium azide</p> <p>Constituents: 0.1% Gelatin, 0.88% Sodium chloride, 0.12% Monobasic dihydrogen sodium phosphate</p>
Purity	Affinity purified
Clonality	Monoclonal
Clone number	2H7
Isotype	IgG2b

Applications

Applications

The Abpromise guarantee

Our [Abpromise guarantee](#) covers the use of ab112461 in the following tested applications.

The application notes include recommended starting dilutions; optimal dilutions/concentrations should be determined by the end user.

Application	Abreviews	Notes
Flow Cyt		Use 5µl for 10 ⁵⁻⁸ cells. Use 5µl in a final volume of 100µl. ab91532 - Mouse monoclonal IgG2b, is suitable for use as an isotype control with this antibody.

Target

Function

This protein may be involved in the regulation of B-cell activation and proliferation.

Tissue specificity

Expressed on B-cells.

Involvement in disease

Defects in MS4A1 are the cause of immunodeficiency common variable type 5 (CVID5) [MIM:613495]; also called antibody deficiency due to CD20 defect. CVID5 is a primary immunodeficiency characterized by antibody deficiency, hypogammaglobulinemia, recurrent bacterial infections and an inability to mount an antibody response to antigen. The defect results from a failure of B-cell differentiation and impaired secretion of immunoglobulins; the numbers of circulating B cells is usually in the normal range, but can be low.

Sequence similarities

Belongs to the MS4A family.

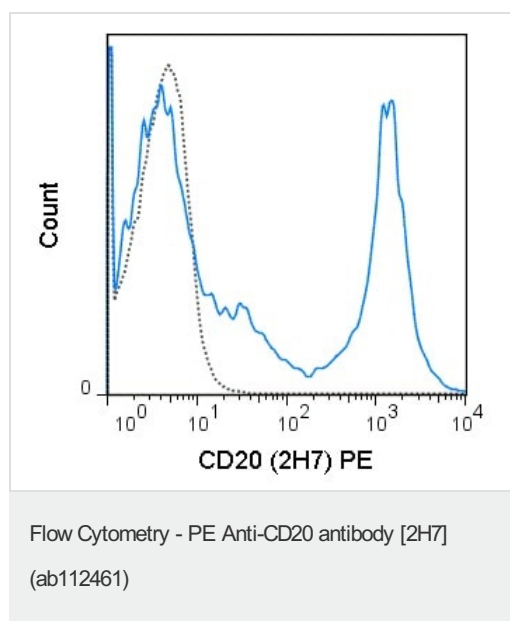
Post-translational modifications

Phosphorylated. Might be functionally regulated by protein kinase(s).

Cellular localization

Membrane.

Images



Human peripheral blood lymphocytes stained with 5µL (0.06µg) ab112461 (solid line) or 0.06µg PE-conjugated mouse IgG2b isotype control (dashed line).

Our Abpromise to you: Quality guaranteed and expert technical support

- Replacement or refund for products not performing as stated on the datasheet
- Valid for 12 months from date of delivery
- Response to your inquiry within 24 hours

- We provide support in Chinese, English, French, German, Japanese and Spanish
- Extensive multi-media technical resources to help you
- We investigate all quality concerns to ensure our products perform to the highest standards

If the product does not perform as described on this datasheet, we will offer a refund or replacement. For full details of the Abpromise, please visit <https://www.abcam.com/abpromise> or contact our technical team.

Terms and conditions

- Guarantee only valid for products bought direct from Abcam or one of our authorized distributors