


Product datasheet

PE Anti-CTLA4 antibody [BNI3] ab210254

1 References 1 Image

Overview

Product name	PE Anti-CTLA4 antibody [BNI3]
Description	PE Mouse monoclonal [BNI3] to CTLA4
Host species	Mouse
Conjugation	PE. Ex: 488nm, Em: 575nm
Tested applications	Suitable for: Flow Cyt (Intra)
Species reactivity	Reacts with: Human Predicted to work with: Baboon, Cynomolgus monkey, Rhesus monkey 
Immunogen	The details of the immunogen for this antibody are not available.
Positive control	Flow Cyt (Intra): Human PBMC stimulated overnight with PMA and Ionomycin.
General notes	This is a neutralizing antibody. The Life Science industry has been in the grips of a reproducibility crisis for a number of years. Abcam is leading the way in addressing this with our range of recombinant monoclonal antibodies and knockout edited cell lines for gold-standard validation. Please check that this product meets your needs before purchasing. If you have any questions, special requirements or concerns, please send us an inquiry and/or contact our Support team ahead of purchase. Recommended alternatives for this product can be found below, along with publications, customer reviews and Q&As

Properties

Form	Liquid
Storage instructions	Shipped at 4°C. Store at +4°C. Store In the Dark.
Storage buffer	pH: 7.20 Preservative: 0.09% Sodium azide Constituents: 0.12% Monobasic dihydrogen sodium phosphate, 0.87% Sodium chloride, 0.1% Gelatin
Purity	Affinity purified
Purification notes	Purified from tissue culture supernatant and conjugated under optimal conditions, with unreacted dye removed from the preparation.
Clonality	Monoclonal

Clone number	BNI3
Isotype	IgG2a
Light chain type	kappa

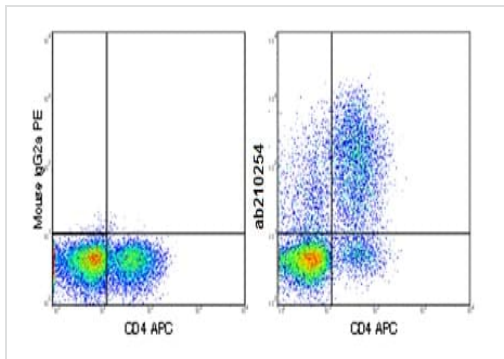
Applications

The Abpromise guarantee Our [Abpromise guarantee](#) covers the use of ab210254 in the following tested applications. The application notes include recommended starting dilutions; optimal dilutions/concentrations should be determined by the end user.

Application	Abreviews	Notes
Flow Cyt (Intra)		Use 5µl for 10 ⁵⁻⁸ cells.

Target

Function	Inhibitory receptor acting as a major negative regulator of T-cell responses. The affinity of CTLA4 for its natural B7 family ligands, CD80 and CD86, is considerably stronger than the affinity of their cognate stimulatory coreceptor CD28.
Tissue specificity	Widely expressed with highest levels in lymphoid tissues. Detected in activated T-cells where expression levels are 30- to 50-fold less than CD28, the stimulatory coreceptor, on the cell surface following activation.
Involvement in disease	<p>Genetic variation in CTLA4 influences susceptibility to systemic lupus erythematosus (SLE) [MIM:152700]. SLE is a chronic, inflammatory and often febrile multisystemic disorder of connective tissue. It affects principally the skin, joints, kidneys and serosal membranes. SLE is thought to represent a failure of the regulatory mechanisms of the autoimmune system. Note=Genetic variations in CTLA4 may influence susceptibility to Graves disease, an autoimmune disorder associated with overactivity of the thyroid gland and hyperthyroidism.</p> <p>Genetic variation in CTLA4 is the cause of susceptibility to diabetes mellitus insulin-dependent type 12 (IDDM12) [MIM:601388]. A multifactorial disorder of glucose homeostasis that is characterized by susceptibility to ketoacidosis in the absence of insulin therapy. Clinical features are polydipsia, polyphagia and polyuria which result from hyperglycemia-induced osmotic diuresis and secondary thirst. These derangements result in long-term complications that affect the eyes, kidneys, nerves, and blood vessels.</p> <p>Genetic variation in CTLA4 is the cause of susceptibility to celiac disease type 3 (CELIAC3) [MIM:609755]. It is a multifactorial disorder of the small intestine that is influenced by both environmental and genetic factors. It is characterized by malabsorption resulting from inflammatory injury to the mucosa of the small intestine after the ingestion of wheat gluten or related rye and barley proteins. In its classic form, celiac disease is characterized in children by malabsorption and failure to thrive.</p>
Sequence similarities	Contains 1 Ig-like V-type (immunoglobulin-like) domain.
Post-translational modifications	<p>N-glycosylation is important for dimerization.</p> <p>Phosphorylation at Tyr-201 prevents binding to the AP-2 adapter complex, blocks endocytosis, and leads to retention of CTLA4 on the cell surface.</p>
Cellular localization	Cell membrane. Exists primarily an intracellular antigen whose surface expression is tightly regulated by restricted trafficking to the cell surface and rapid internalisation and.



Flow Cytometry (Intracellular) - PE Anti-CTLA4 antibody [BNI3] (ab210254)

Intracellular Flow Cytometrical analysis of Human PBMC, stimulated overnight with PMA and Ionomycin, labeling CTLA4 with 0.5 μ g ab210254 (right panel) or 0.5 μ g Phycoerythrin Mouse IgG2a isotype control (left panel).

Please note: All products are "FOR RESEARCH USE ONLY. NOT FOR USE IN DIAGNOSTIC PROCEDURES"

Our Abpromise to you: Quality guaranteed and expert technical support

- Replacement or refund for products not performing as stated on the datasheet
- Valid for 12 months from date of delivery
- Response to your inquiry within 24 hours
- We provide support in Chinese, English, French, German, Japanese and Spanish
- Extensive multi-media technical resources to help you
- We investigate all quality concerns to ensure our products perform to the highest standards

If the product does not perform as described on this datasheet, we will offer a refund or replacement. For full details of the Abpromise, please visit <https://www.abcam.com/abpromise> or contact our technical team.

Terms and conditions

- Guarantee only valid for products bought direct from Abcam or one of our authorized distributors