


## Product datasheet

# PE Anti-Human Nuclear Antigen antibody [235-1] ab215755

[1 References](#) [2 Images](#)

### Overview

---

<b>Product name</b>	PE Anti-Human Nuclear Antigen antibody [235-1]
<b>Description</b>	PE Mouse monoclonal [235-1] to Human Nuclear Antigen
<b>Host species</b>	Mouse
<b>Conjugation</b>	PE. Ex: 488nm, Em: 575nm
<b>Specificity</b>	This antibody is an excellent marker for human cells in xenographic model research. It reacts specifically with human cells. It recognizes subcellular organelles or compartments of human cells. These markers may be useful in identification of these organelles in cells, tissues and biochemical preparations. This antibody recognizes an antigen associated with the nuclei in human cells.
<b>Tested applications</b>	<b>Suitable for:</b> Flow Cyt
<b>Species reactivity</b>	<b>Reacts with:</b> Human <b>Predicted to work with:</b> Non human primates  <b>Does not react with:</b> Mouse, Rat, Chicken
<b>Immunogen</b>	Tissue, cells or virus corresponding to Human Nuclear Antigen. Nuclei of human myeloid leukemia biopsy cells
<b>Positive control</b>	FACS: MCF7 and HeLa cells.
<b>General notes</b>	<p>The Life Science industry has been in the grips of a reproducibility crisis for a number of years. Abcam is leading the way in addressing this with our range of recombinant monoclonal antibodies and knockout edited cell lines for gold-standard validation. Please check that this product meets your needs before purchasing.</p> <p>If you have any questions, special requirements or concerns, please send us an inquiry and/or contact our Support team ahead of purchase. Recommended alternatives for this product can be found below, along with publications, customer reviews and Q&amp;As</p>

### Properties

---

<b>Form</b>	Liquid
<b>Storage instructions</b>	Shipped at 4°C. Store at +4°C. Store In the Dark.
<b>Storage buffer</b>	pH: 7.2

Preservative: 0.05% Sodium azide  
Constituents: 99% PBS, 0.05% BSA

**Purity** Protein G purified  
**Clonality** Monoclonal  
**Clone number** 235-1  
**Isotype** IgG1  
**Light chain type** kappa

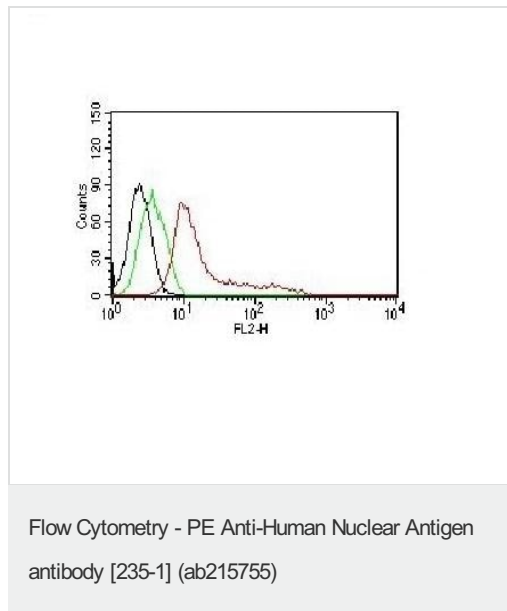
## Applications

**The Abpromise guarantee** Our [Abpromise guarantee](#) covers the use of ab215755 in the following tested applications. The application notes include recommended starting dilutions; optimal dilutions/concentrations should be determined by the end user.

Application	Abreviews	Notes
Flow Cyt		Use at an assay dependent concentration. 5 $\mu$ L per test per one million cells in 0.1 mL or 5 $\mu$ L per 100 $\mu$ L of whole blood.

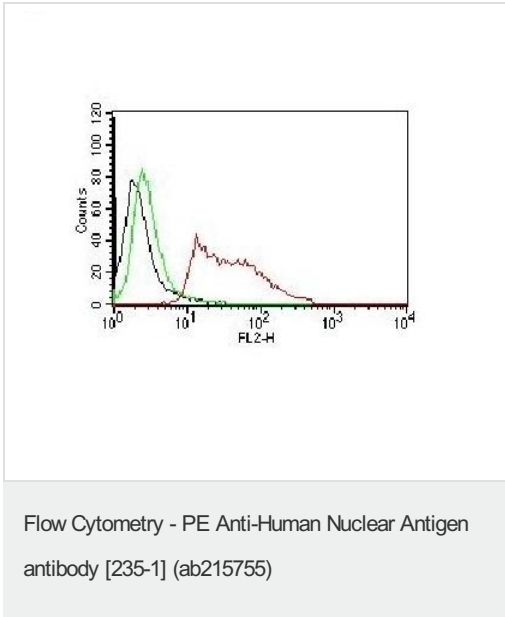
## Target

## Images



Flow cytometry analysis of MCF7 cells labeling Human Nuclear Antigen using ab215755 at 5  $\mu$ L per  $10^6$  cells (red).

Controls: Cells alone (black) and isotype control (green).



Flow cytometry analysis of HeLa cells labeling Human Nuclear Antigen using ab215755 at 5  $\mu$ L per  $10^6$  cells (red).

Controls: Cells alone (black) and isotype control (green).

**Please note:** All products are "FOR RESEARCH USE ONLY. NOT FOR USE IN DIAGNOSTIC PROCEDURES"

### Our Abpromise to you: Quality guaranteed and expert technical support

- Replacement or refund for products not performing as stated on the datasheet
- Valid for 12 months from date of delivery
- Response to your inquiry within 24 hours
- We provide support in Chinese, English, French, German, Japanese and Spanish
- Extensive multi-media technical resources to help you
- We investigate all quality concerns to ensure our products perform to the highest standards

If the product does not perform as described on this datasheet, we will offer a refund or replacement. For full details of the Abpromise, please visit <https://www.abcam.com/abpromise> or contact our technical team.

### Terms and conditions

- Guarantee only valid for products bought direct from Abcam or one of our authorized distributors