

Product datasheet

PE/Cy7® Anti-CD10 antibody [CB-CALLA] ab95544

1 Image

Overview

Product name	PE/Cy7® Anti-CD10 antibody [CB-CALLA]
Description	PE/Cy7® Mouse monoclonal [CB-CALLA] to CD10
Host species	Mouse
Conjugation	PE/Cy7®. Ex: 496nm, Em: 774nm
Tested applications	Suitable for: Flow Cyt
Species reactivity	Reacts with: Human
Immunogen	CD10 of human origin
Positive control	Human peripheral blood cells
General notes	<p>This Cy7 tandem dye is sensitive to photo-induced oxidation. Protect this vial from light during storage, handling and experimental procedures.</p> <p>The Life Science industry has been in the grips of a reproducibility crisis for a number of years. Abcam is leading the way in addressing this with our range of recombinant monoclonal antibodies and knockout edited cell lines for gold-standard validation. Please check that this product meets your needs before purchasing.</p> <p>If you have any questions, special requirements or concerns, please send us an inquiry and/or contact our Support team ahead of purchase. Recommended alternatives for this product can be found below, along with publications, customer reviews and Q&As</p>

Properties

Form	Liquid
Storage instructions	Shipped at 4°C. Store at +4°C.
Storage buffer	pH: 7.2 Preservative: 0.09% Sodium azide
	Constituents: aqueous buffer
Purity	Protein G purified
Clonality	Monoclonal
Clone number	CB-CALLA
Isotype	IgG2b

Applications

The Abpromise guarantee

Our [Abpromise guarantee](#) covers the use of ab95544 in the following tested applications.

The application notes include recommended starting dilutions; optimal dilutions/concentrations should be determined by the end user.

Application	Abreviews	Notes
Flow Cyt		Use 5µl for 10 ⁶ cells. ab154458 - Mouse monoclonal IgG2b, is suitable for use as an isotype control with this antibody.

Target

Function

Thermolysin-like specificity, but is almost confined on acting on polypeptides of up to 30 amino acids. Biologically important in the destruction of opioid peptides such as Met- and Leu-enkephalins by cleavage of a Gly-Phe bond. Able to cleave angiotensin-1, angiotensin-2 and angiotensin 1-9. Involved in the degradation of atrial natriuretic factor (ANF). Displays UV-inducible elastase activity toward skin preelastic and elastic fibers.

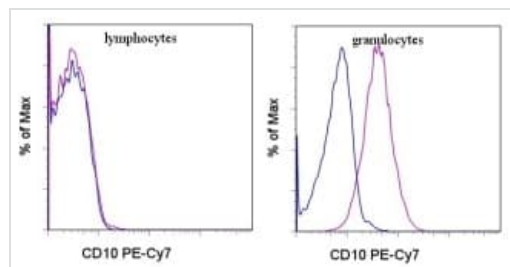
Sequence similarities

Belongs to the peptidase M13 family.

Cellular localization

Cell membrane.

Images



Flow Cytometry - PE/Cy7® Anti-CD10 antibody [CB-CALLA] (ab95544)

Staining of normal human peripheral blood cells with Mouse IgG2b Isotype Control PE-Cy7 (blue histogram) or Anti-Human CD10 PE-Cy7 (ab95544) (purple histogram).

Please note: All products are "FOR RESEARCH USE ONLY. NOT FOR USE IN DIAGNOSTIC PROCEDURES"

Our Abpromise to you: Quality guaranteed and expert technical support

- Replacement or refund for products not performing as stated on the datasheet
- Valid for 12 months from date of delivery
- Response to your inquiry within 24 hours
- We provide support in Chinese, English, French, German, Japanese and Spanish
- Extensive multi-media technical resources to help you

- We investigate all quality concerns to ensure our products perform to the highest standards

If the product does not perform as described on this datasheet, we will offer a refund or replacement. For full details of the Abpromise, please visit <https://www.abcam.com/abpromise> or contact our technical team.

Terms and conditions

- Guarantee only valid for products bought direct from Abcam or one of our authorized distributors