

## Product datasheet

# PEGylated Protein (Polyethylene Glycol) ELISA Kit ab133065

[2 References](#) [4 Images](#)

### Overview

**Product name** PEGylated Protein (Polyethylene Glycol) ELISA Kit

**Detection method** Colorimetric

**Precision**

Intra-assay

| Sample | n  | Mean    | SD | CV%  |
|--------|----|---------|----|------|
| 1      | 16 | 25ng/ml |    | 3.4% |
| 2      | 16 | 50ng/ml |    | 4.2% |

Inter-assay

| Sample       | n | Mean      | SD  | CV%  |
|--------------|---|-----------|-----|------|
| Expect conc1 | 3 | 113ng/ml  | 0.4 | 2.4% |
| Expect conc1 | 3 | 27.7ng/ml | 1.4 | 1.3% |
| Expect conc1 | 3 | 7.25ng/ml | 3.1 | 5.7% |

**Sample type** Serum, Plasma, Other biological fluids, Tissue

**Assay type** Competitive

**Range** 1.75 ng/ml - 225 ng/ml

**Assay time** 2h 00m

**Assay duration** Multiple steps standard assay

**Product overview**

PEGylated protein ELISA kit is a competitive ELISA designed for the accurate quantitative measurement of PEGylated protein in plasma, serum, tissue lysate samples and other biological samples.

The kit detects both free and conjugated forms of PEG. Due to the nature of the antibody used, this assay is more sensitive to higher molecular weight PEG molecules.

Consult our PEG FAQ page for more information: <https://www.abcam.com/primary->

A monoclonal antibody specific to PEGylated protein has been precoated onto 96-well plates. Standards or test samples are added to the wells, along with a solution of PEGylated protein conjugated to biotin, followed by a solution of polyclonal antibody to PEGylated protein. The plate is washed to remove unbound reagents. A solution of streptavidin-HRP conjugate is then added. After further incubation the excess reagents are washed away and TMB substrate is added, which is catalyzed by HRP to generate a blue color. A stop solution changes this color from blue to yellow, and the intensity of this yellow coloration is inversely proportional to the amount of PEGylated protein captured in the plate.

**This kit does not contain Tween 20.**

Tween 20 usage: Tween 20 is a detergent that can interfere with ELISA and potentially other applications (often used in antibody dilution buffers, such as TBST) when using anti-PEG products. This is also the same case for other polyoxyethylene detergents. Therefore, it is recommended to avoid Tween 20 and other polyoxyethylene detergents when performing ELISA using anti-PEG products.

**Learn more about PEG RabMAb primary antibodies and kit - [PEG RabMAb Product Portal Page](#)**

**Notes**

Poly(ethylene glycol) (PEG) is a widely used polymer in drug delivery systems and is often directly conjugated to a drug therapeutic. PEGylation of drug therapeutics is desirable as it has been found to increase the retention time, reduce the immunogenicity and increase stability towards metabolic enzymes. ab133065, the PEGylated protein ELISA Kit, is applicable for drug development and pharmaceutical manufacturing applications including drug formulations, pharmacokinetics analysis, drug comparison, lead candidate identification, lot release criteria and in-process QC studies. At this time, there are no long-term studies revealing the fate of this polymer in the body. The need for toxicology studies that would determine the accumulation of the metabolized PEGylated therapeutics in various tissues has been identified.

**Platform**

Microplate

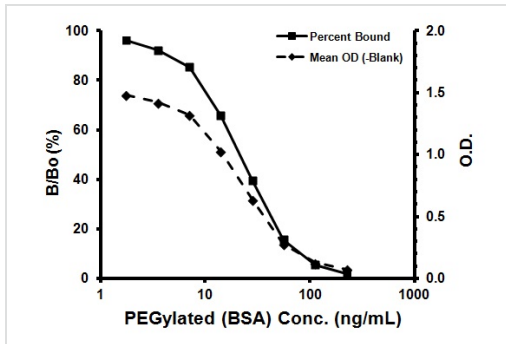
**Properties**

**Storage instructions** Store at +4°C. Please refer to protocols.

| Components                       | 1 x 96 tests |
|----------------------------------|--------------|
| 20X Wash Buffer 3 Concentrate    | 2 x 25ml     |
| 500X PEGylated Protein Conjugate | 1 x 50µl     |
| 10X Assay Buffer 39              | 1 x 25ml     |
| Biotinylated PEGylated Protein   | 1 x 5ml      |
| PEG Microtiter Plate             | 1 unit       |
| PEGylated BSA Control            | 1 x 50µl     |

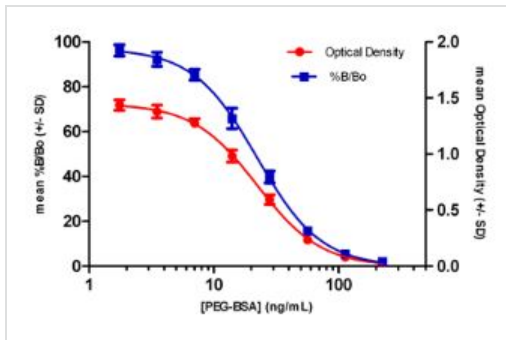
| Components                          | 1 x 96 tests |
|-------------------------------------|--------------|
| PEGylated Protein Conjugate Diluent | 1 x 12ml     |
| Plate Sealer                        | 2 units      |
| Stop Solution 2                     | 1 x 10ml     |
| TMB Substrate                       | 1 x 10ml     |

## Images



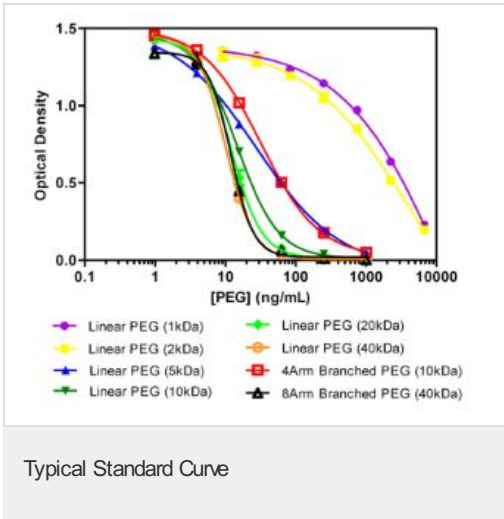
Typical Standard Curve

Representative standard curve using ab133065.

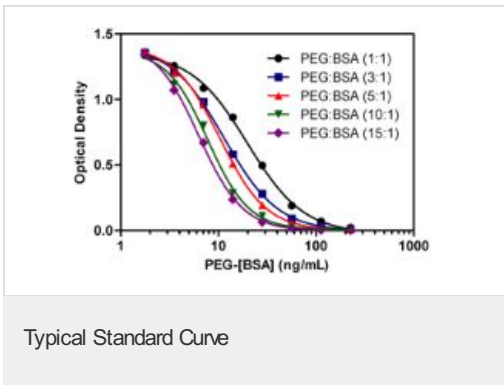


Typical Standard Curve

Representative standard curve using ab133065.



Representative standard curve using ab133065.



Representative standard curve using ab133065.

**Please note:** All products are "FOR RESEARCH USE ONLY. NOT FOR USE IN DIAGNOSTIC PROCEDURES"

### Our Abpromise to you: Quality guaranteed and expert technical support

- Replacement or refund for products not performing as stated on the datasheet
- Valid for 12 months from date of delivery
- Response to your inquiry within 24 hours
- We provide support in Chinese, English, French, German, Japanese and Spanish
- Extensive multi-media technical resources to help you
- We investigate all quality concerns to ensure our products perform to the highest standards

If the product does not perform as described on this datasheet, we will offer a refund or replacement. For full details of the Abpromise, please visit <https://www.abcam.com/abpromise> or contact our technical team.

### Terms and conditions

- Guarantee only valid for products bought direct from Abcam or one of our authorized distributors