


Product datasheet

Anti-Pepsinogen II/PGC antibody ab104595

1 References 1 Image

Overview

<b>Product name</b>	Anti-Pepsinogen II/PGC antibody
<b>Description</b>	Rabbit polyclonal to Pepsinogen II/PGC
<b>Host species</b>	Rabbit
<b>Tested applications</b>	<b>Suitable for:</b> WB
<b>Species reactivity</b>	<b>Reacts with:</b> Human <b>Predicted to work with:</b> Rat, Rabbit, Baboon, Macaque monkey, Common marmoset, Orangutan 
<b>Immunogen</b>	Synthetic peptide corresponding to Human Pepsinogen II/PGC aa 150-250 conjugated to keyhole limpet haemocyanin. (Peptide available as <a href="#">ab104933</a> )
<b>Positive control</b>	This antibody gave a positive signal in Human Stomach Tumour Tissue lysate.
<b>General notes</b>	This product was previously labelled as Pepsinogen II

Properties

<b>Form</b>	Liquid
<b>Storage instructions</b>	Shipped at 4°C. Store at +4°C short term (1-2 weeks). Upon delivery aliquot. Store at -20°C or -80°C. Avoid freeze / thaw cycle.
<b>Storage buffer</b>	Preservative: 0.02% Sodium Azide Constituents: 1% BSA, PBS, pH 7.4
<b>Purity</b>	Immunogen affinity purified
<b>Clonality</b>	Polyclonal
<b>Isotype</b>	IgG

Applications

Our [Abpromise guarantee](#) covers the use of **ab104595** in the following tested applications.

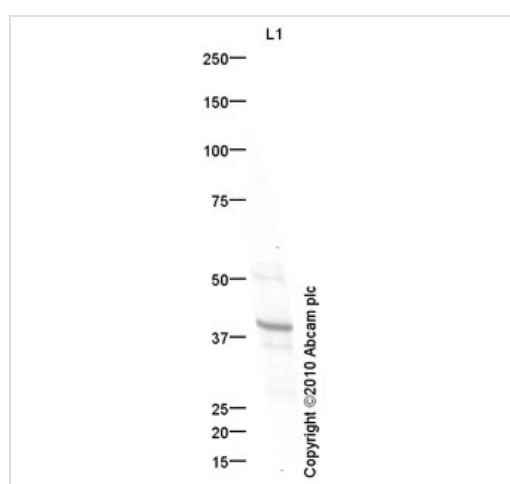
The application notes include recommended starting dilutions; optimal dilutions/concentrations should be determined by the end user.

Application	Abreviews	Notes
WB		Use a concentration of 1 µg/ml. Detects a band of approximately 40 kDa (predicted molecular weight: 42 kDa).

## Target

<b>Function</b>	Hydrolyzes a variety of proteins.
<b>Sequence similarities</b>	Belongs to the peptidase A1 family. Contains 1 peptidase A1 domain.
<b>Cellular localization</b>	Secreted.

## Images



Western blot - Anti-Pepsinogen II/PGC antibody (ab104595)

Anti-Pepsinogen II/PGC antibody (ab104595) at 1 µg/ml + Human stomach tumor tissue lysate (adenocarcinoma) - total protein (ab29678) at 10 µg

### Secondary

Human stomach tumor tissue lysate (adenocarcinoma) - total protein (ab29678) at 1/5000 dilution

Developed using the ECL technique.

Performed under reducing conditions.

**Predicted band size:** 42 kDa

**Observed band size:** 40 kDa

[why is the actual band size different from the predicted?](#)

**Exposure time:** 30 seconds

Pepsinogen II/PGC has a predicted molecular weight of 42-kDa. The first 16 amino acids of the Pepsinogen II/PGC sequence act as a signal sequence. This may explain the migration of the protein at a lower MW than expected.

**Please note:** All products are "FOR RESEARCH USE ONLY AND ARE NOT INTENDED FOR DIAGNOSTIC OR THERAPEUTIC USE"

## **Our Abpromise to you: Quality guaranteed and expert technical support**

---

- Replacement or refund for products not performing as stated on the datasheet
- Valid for 12 months from date of delivery
- Response to your inquiry within 24 hours
  
- We provide support in Chinese, English, French, German, Japanese and Spanish
- Extensive multi-media technical resources to help you
- We investigate all quality concerns to ensure our products perform to the highest standards

If the product does not perform as described on this datasheet, we will offer a refund or replacement. For full details of the Abpromise, please visit <https://www.abcam.com/abpromise> or contact our technical team.

## **Terms and conditions**

---

- Guarantee only valid for products bought direct from Abcam or one of our authorized distributors