

Product datasheet

Anti-Peripherin antibody [8G2] ab4653

★☆☆☆☆ 1 Abreviews 3 References 2 Images

Overview

Product name	Anti-Peripherin antibody [8G2]
Description	Mouse monoclonal [8G2] to Peripherin
Host species	Mouse
Tested applications	Suitable for: WB, ICC/IF
Species reactivity	Reacts with: Mouse, Rat, Cow, Human
Immunogen	Recombinant Rat Peripherin purified from E. coli.
Positive control	WB: Mouse, rat, cow spinal cord lysate, SH-SY5Y, PC-12 whole cell lysate. ICC: SH-SY5Y, PC-12 cells.
General notes	<p>The Life Science industry has been in the grips of a reproducibility crisis for a number of years. Abcam is leading the way in addressing this with our range of recombinant monoclonal antibodies and knockout edited cell lines for gold-standard validation. Please check that this product meets your needs before purchasing.</p> <p>If you have any questions, special requirements or concerns, please send us an inquiry and/or contact our Support team ahead of purchase. Recommended alternatives for this product can be found below, along with publications, customer reviews and Q&As</p>

Properties

Form	Liquid
Storage instructions	Shipped at 4°C. Store at +4°C short term (1-2 weeks). Upon delivery aliquot. Store at -20°C or -80°C. Avoid freeze / thaw cycle.
Storage buffer	Preservative: 0.032% Sodium azide Constituents: 49.98% Glycerol, 49.98% PBS
Purity	Protein A purified
Purification notes	Purified antibody from TCS.
Clonality	Monoclonal
Clone number	8G2
Isotype	IgG1
Light chain type	kappa

Applications

The Abpromise guarantee

Our [Abpromise guarantee](#) covers the use of ab4653 in the following tested applications.

The application notes include recommended starting dilutions; optimal dilutions/concentrations should be determined by the end user.

Application	Abreviews	Notes
WB		1/5000. Detects a band of approximately 57 kDa (predicted molecular weight: 57 kDa).
ICC/IF		1/500.

Target

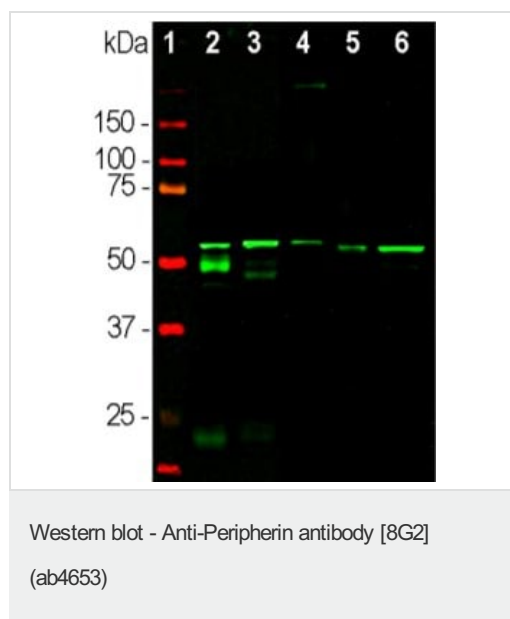
Function

Class-III neuronal intermediate filament protein.

Sequence similarities

Belongs to the intermediate filament family.

Images



All lanes : Anti-Peripherin antibody [8G2] (ab4653) at 1/500 dilution

Lane 2 : Mouse spinal cord lysate

Lane 3 : Rat spinal cord lysate

Lane 4 : Cow spinal cord lysate

Lane 5 : SH-SY5Y (human bone marrow neuroblastoma cell) whole cell lysate

Lane 6 : PC-12 (rat adrenal gland pheochromocytoma cell) whole cell lysate

Secondary

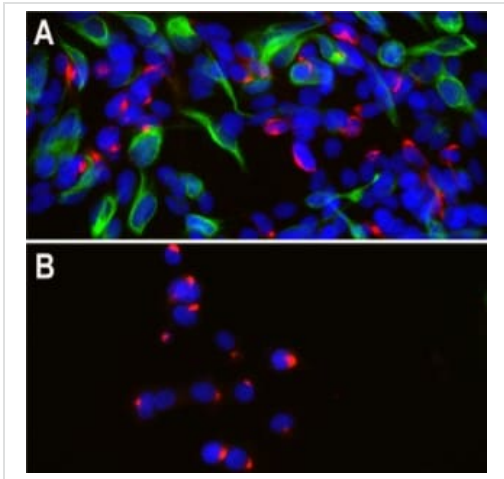
All lanes : Anti-Mouse IgG

Predicted band size: 57 kDa

Observed band size: 57 kDa

Additional bands at: 25 kDa (possible IgG), 50 kDa (possible IgG)

The band at ~57kDa corresponds to the peripherin protein. Bands at 50 and 25kDa detected in the mouse spinal cord lysate, correspond to the heavy and light chains of mouse IgG.



Immunofluorescent analysis of SH-SY5Y (human bone marrow neuroblastoma cell) cells (A) and PC-12 (rat adrenal gland pheochromocytoma cell) cells (B), stained with ab4653 at 1/500 dilution (Red) and costained with chicken polyclonal anti-vimentin antibody at 1/10,000 dilution (Green). Blue: DAPI staining of nuclear DNA.

Immunocytochemistry/ Immunofluorescence - Anti-
Peripherin antibody [8G2] (ab4653)

Please note: All products are "FOR RESEARCH USE ONLY. NOT FOR USE IN DIAGNOSTIC PROCEDURES"

Our Abpromise to you: Quality guaranteed and expert technical support

- Replacement or refund for products not performing as stated on the datasheet
- Valid for 12 months from date of delivery
- Response to your inquiry within 24 hours
- We provide support in Chinese, English, French, German, Japanese and Spanish
- Extensive multi-media technical resources to help you
- We investigate all quality concerns to ensure our products perform to the highest standards

If the product does not perform as described on this datasheet, we will offer a refund or replacement. For full details of the Abpromise, please visit <https://www.abcam.com/abpromise> or contact our technical team.

Terms and conditions

- Guarantee only valid for products bought direct from Abcam or one of our authorized distributors