


Product datasheet

Anti-Periplakin antibody ab72422

1 References 2 Images

Overview

---

<b>Product name</b>	Anti-Periplakin antibody
<b>Description</b>	Rabbit polyclonal to Periplakin
<b>Host species</b>	Rabbit
<b>Tested applications</b>	<b>Suitable for:</b> WB, IP
<b>Species reactivity</b>	<b>Reacts with:</b> Mouse, Rat, Human <b>Predicted to work with:</b> Guinea pig, Cow, Xenopus laevis, Chimpanzee, Amphibian, Rhesus monkey, Gorilla, Orangutan, Medaka fish 
<b>Immunogen</b>	Synthetic peptide corresponding to a region between residues 1150 and 1200 of human Periplakin (NP_002696.3)
<b>General notes</b>	<p>Reproducibility is key to advancing scientific discovery and accelerating scientists' next breakthrough.</p> <p>Abcam is leading the way with our range of recombinant antibodies, knockout-validated antibodies and knockout cell lines, all of which support improved reproducibility.</p> <p>We are also planning to innovate the way in which we present recommended applications and species on our product datasheets, so that only applications &amp; species that have been tested in our own labs, our suppliers or by selected trusted collaborators are covered by our Abpromise™ guarantee.</p> <p>In preparation for this, we have started to update the applications &amp; species that this product is Abpromise guaranteed for.</p> <p>We are also updating the applications &amp; species that this product has been “predicted to work with,” however this information is not covered by our Abpromise guarantee.</p> <p>Applications &amp; species from publications and Abreviews that have not been tested in our own labs or in those of our suppliers are not covered by the Abpromise guarantee.</p> <p>Please check that this product meets your needs before purchasing. If you have any questions, special requirements or concerns, please send us an inquiry and/or contact our Support team ahead of purchase. Recommended alternatives for this product can be found below, as well as customer reviews and Q&amp;As.</p>

Properties

---

<b>Form</b>	Liquid
-------------	--------

<b>Storage instructions</b>	Shipped at 4°C. Upon delivery aliquot and store at -20°C. Avoid freeze / thaw cycles.
<b>Storage buffer</b>	pH: 6.8 Preservative: 0.09% Sodium azide Constituents: 0.1% BSA, Tris buffered saline
<b>Purity</b>	Immunogen affinity purified
<b>Purification notes</b>	ab72422 was affinity purified using an epitope specific to Periplakin immobilized on solid support.
<b>Clonality</b>	Polyclonal
<b>Isotype</b>	IgG

## Applications

Our [Abpromise guarantee](#) covers the use of **ab72422** in the following tested applications.

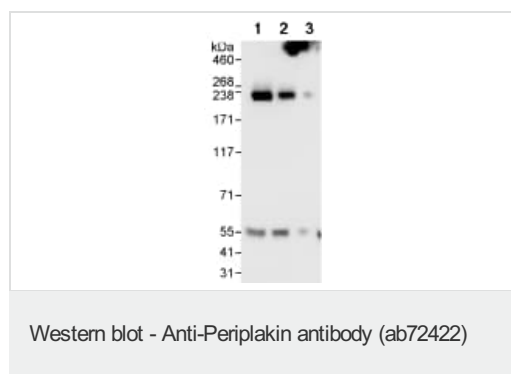
The application notes include recommended starting dilutions; optimal dilutions/concentrations should be determined by the end user.

Application	Abreviews	Notes
WB		1/2000 - 1/10000. Detects a band of approximately 205 kDa (predicted molecular weight: 205 kDa).
IP		Use at 2-5 µg/mg of lysate.

## Target

<b>Function</b>	Component of the cornified envelope of keratinocytes. May link the cornified envelope to desmosomes and intermediate filaments. May act as a localization signal in PKB/AKT-mediated signaling.
<b>Tissue specificity</b>	Expressed in stratified squamous epithelia and in some other epithelia.
<b>Sequence similarities</b>	Belongs to the plakin or cytolinker family. Contains 2 plectin repeats. Contains 4 spectrin repeats.
<b>Cellular localization</b>	Cell junction > desmosome. Cytoplasm > cytoskeleton. Cell membrane. Nucleus. Mitochondrion. Associated with desmosomes and intermediate filaments.

## Images



**All lanes :** Anti-Periplakin antibody (ab72422) at 0.04 µg/ml

**Lane 1 :** HeLa whole cell lysate at 50 µg

**Lane 2 :** HeLa whole cell lysate at 15 µg

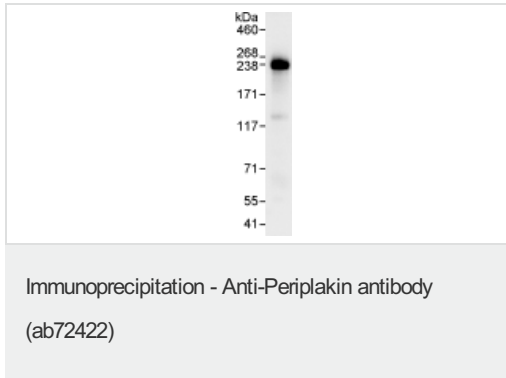
**Lane 3 :** HeLa whole cell lysate at 5 µg

**Predicted band size:** 205 kDa

**Observed band size:** 205 kDa

**Additional bands at:** 55 kDa. We are unsure as to the identity of these extra bands.

**Exposure time:** 10 seconds



Detection of Periplakin by Western Blot of Immunoprecipitate.  
ab72422 at 1 µg/ml staining Periplakin in HeLa whole cell lysate immunoprecipitated using ab72422 at 3 µg/mg lysate (1 mg/IP; 20% of IP loaded/lane).

Detection: Chemiluminescence with exposure time of 10 seconds.

**Please note:** All products are "FOR RESEARCH USE ONLY. NOT FOR USE IN DIAGNOSTIC PROCEDURES"

### Our Abpromise to you: Quality guaranteed and expert technical support

---

- Replacement or refund for products not performing as stated on the datasheet
- Valid for 12 months from date of delivery
- Response to your inquiry within 24 hours
- We provide support in Chinese, English, French, German, Japanese and Spanish
- Extensive multi-media technical resources to help you
- We investigate all quality concerns to ensure our products perform to the highest standards

If the product does not perform as described on this datasheet, we will offer a refund or replacement. For full details of the Abpromise, please visit <https://www.abcam.com/abpromise> or contact our technical team.

### Terms and conditions

---

- Guarantee only valid for products bought direct from Abcam or one of our authorized distributors