

Product datasheet

Anti-Pescadillo antibody ab72539

4 References 3 Images

Overview

<b>Product name</b>	Anti-Pescadillo antibody
<b>Description</b>	Rabbit polyclonal to Pescadillo
<b>Host species</b>	Rabbit
<b>Tested applications</b>	<b>Suitable for:</b> IHC-P, WB, IP
<b>Species reactivity</b>	<b>Reacts with:</b> Human <b>Predicted to work with:</b> Chimpanzee, Rhesus monkey, Gorilla, Orangutan ▲
<b>Immunogen</b>	Synthetic peptide corresponding to a region between residue 535 and the C-terminus (residue 588) of human Pescadillo (NP_055118.1)
<b>Positive control</b>	HeLa and 293T whole cell lysates.
<b>General notes</b>	<p>The Life Science industry has been in the grips of a reproducibility crisis for a number of years. Abcam is leading the way in addressing this with our range of recombinant monoclonal antibodies and knockout edited cell lines for gold-standard validation. Please check that this product meets your needs before purchasing.</p> <p>If you have any questions, special requirements or concerns, please send us an inquiry and/or contact our Support team ahead of purchase. Recommended alternatives for this product can be found below, along with publications, customer reviews and Q&amp;As</p>

Properties

<b>Form</b>	Liquid
<b>Storage instructions</b>	Shipped at 4°C. Upon delivery aliquot and store at -20°C. Avoid freeze / thaw cycles.
<b>Storage buffer</b>	pH: 6.8 Preservative: 0.09% Sodium azide Constituents: 0.1% BSA, Tris buffered saline
<b>Purity</b>	Immunogen affinity purified
<b>Clonality</b>	Polyclonal
<b>Isotype</b>	IgG

Applications

## The Abpromise guarantee

Our [Abpromise guarantee](#) covers the use of ab72539 in the following tested applications.

The application notes include recommended starting dilutions; optimal dilutions/concentrations should be determined by the end user.

Application	Abreviews	Notes
IHC-P		1/100 - 1/500. Perform heat mediated antigen retrieval with citrate buffer pH 6 before commencing with IHC staining protocol.
WB		1/2000 - 1/10000. Detects a band of approximately 68 kDa (predicted molecular weight: 68 kDa).
IP		Use at 2-5 µg/mg of lysate.

## Target

### Function

Component of the PeBoW complex, which is required for maturation of 28S and 5.8S ribosomal RNAs and formation of the 60S ribosome.

### Tissue specificity

Significant levels are detected in a variety of cancer cell lines, including glioblastoma, breast carcinoma, colon carcinoma and cervical carcinoma cells. Levels are abnormally elevated in malignant tumors of astrocytic origin.

### Sequence similarities

Belongs to the pescadillo family.  
Contains 1 BRCT domain.

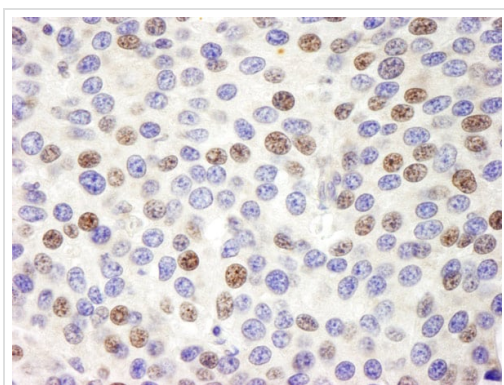
### Post-translational modifications

Sumoylated.

### Cellular localization

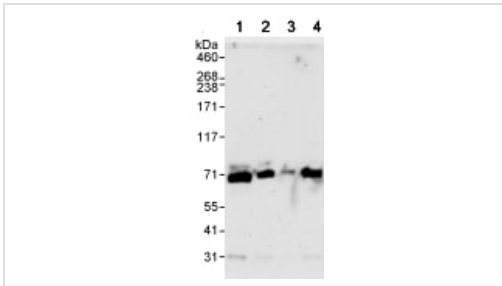
Nucleus > nucleolus. Nucleus > nucleoplasm. Chromosome. Appears to localize to the periphery of metaphase chromosomes during mitosis and to the prenucleolar bodies that form in mitotic cells prior to the actual nucleoli.

## Images



Immunohistochemistry (Formalin/PFA-fixed paraffin-embedded sections) analysis of human breast carcinoma tissue labelling Pescadillo with ab72539 at 1/200 (1µg/ml). Detection: DAB.

Immunohistochemistry (Formalin/PFA-fixed paraffin-embedded sections) - Anti-Pescadillo antibody (ab72539)



Western blot - Anti-Pescadillo antibody (ab72539)

**All lanes :** Anti-Pescadillo antibody (ab72539) at 0.04 µg/ml

**Lane 1 :** HeLa whole cell lysate at 50 µg

**Lane 2 :** HeLa whole cell lysate at 15 µg

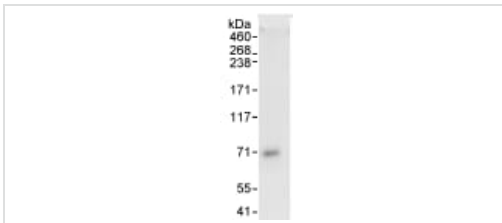
**Lane 3 :** HeLa whole cell lysate at 5 µg

**Lane 4 :** 293T whole cell lysate at 50 µg

**Predicted band size:** 68 kDa

**Observed band size:** 68 kDa

**Additional bands at:** 31 kDa. We are unsure as to the identity of these extra bands.



Immunoprecipitation - Anti-Pescadillo antibody (ab72539)

Detection of Human Pescadillo by Immunoprecipitation from Whole cell lysate from HeLa cells (1 mg for IP, 20% of IP loaded), using ab72539 at 3 µg/mg lysate for IP and at 1 µg/ml for subsequent Western blot detection.

**Please note:** All products are "FOR RESEARCH USE ONLY. NOT FOR USE IN DIAGNOSTIC PROCEDURES"

### Our Abpromise to you: Quality guaranteed and expert technical support

- Replacement or refund for products not performing as stated on the datasheet
- Valid for 12 months from date of delivery
- Response to your inquiry within 24 hours
- We provide support in Chinese, English, French, German, Japanese and Spanish
- Extensive multi-media technical resources to help you
- We investigate all quality concerns to ensure our products perform to the highest standards

If the product does not perform as described on this datasheet, we will offer a refund or replacement. For full details of the Abpromise, please visit <https://www.abcam.com/abpromise> or contact our technical team.

### Terms and conditions

- Guarantee only valid for products bought direct from Abcam or one of our authorized distributors