

Product datasheet

Anti-PGM1 antibody [EPR15240] ab188869

Recombinant RabMAb

5 Images

Overview

Product name	Anti-PGM1 antibody [EPR15240]
Description	Rabbit monoclonal [EPR15240] to PGM1
Host species	Rabbit
Tested applications	Suitable for: WB, Flow Cyt, IP, ICC/IF
Species reactivity	Reacts with: Human
Immunogen	Synthetic peptide within Human PGM1 aa 1-100. The exact sequence is proprietary. Database link: P36871
Positive control	Human fetal heart, fetal liver, HepG2, 293T and Jurkat lysates; 293T cells.
General notes	

Our RabMAb[®] technology is a patented hybridoma-based technology for making rabbit monoclonal antibodies. For details on our patents, please refer to [RabMAb[®] patents](#).

This product is a [recombinant rabbit monoclonal antibody](#).

Properties

Form	Liquid
Storage instructions	Shipped at 4°C. Store at +4°C short term (1-2 weeks). Upon delivery aliquot. Store at -20°C long term. Avoid freeze / thaw cycle.
Storage buffer	Preservative: 0.01% Sodium azide Constituents: 40% Glycerol, 59% PBS, 0.05% BSA
Purity	Protein A purified
Clonality	Monoclonal
Clone number	EPR15240
Isotype	IgG

Applications

Our [Abpromise guarantee](#) covers the use of **ab188869** in the following tested applications.

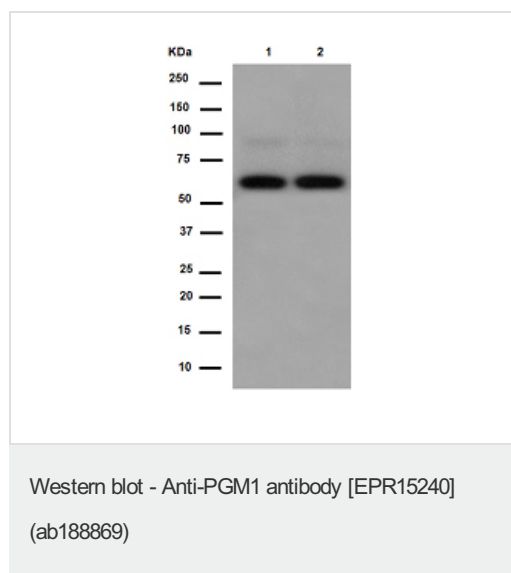
The application notes include recommended starting dilutions; optimal dilutions/concentrations should be determined by the end user.

Application	Abreviews	Notes
WB		1/1000 - 1/2000. Detects a band of approximately 61 kDa (predicted molecular weight: 61 kDa).
Flow Cyt		1/360. ab172730 - Rabbit monoclonal IgG, is suitable for use as an isotype control with this antibody.
IP		1/30 - 1/50.
ICC/IF		1/250.

Target

Function	This enzyme participates in both the breakdown and synthesis of glucose.
Involvement in disease	Defects in PGM1 are the cause of glycogen storage disease type 14 (GSD14) [MIM:612934]. A metabolic disorder resulting in a myopathy characterized by exercise-induced intolerance with episodes of rhabdomyolysis, normal elevation of lactate, and hyperammonemia on a forearm-exercise test.
Sequence similarities	Belongs to the phosphohexose mutase family.
Cellular localization	Cytoplasm.

Images



All lanes : Anti-PGM1 antibody [EPR15240] (ab188869) at 1/1000 dilution

Lane 1 : HepG2 cell lysate

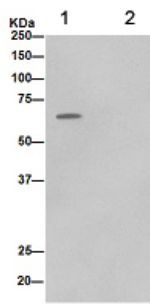
Lane 2 : Jurkat cell lysate

Lysates/proteins at 20 µg per lane.

Secondary

All lanes : Goat Anti-Rabbit IgG, (H+L), Peroxidase conjugate at 1/1000 dilution

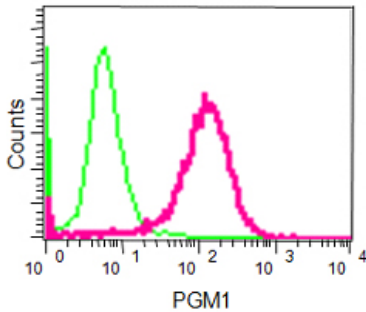
Predicted band size: 61 kDa



Immunoprecipitation - Anti-PGM1 antibody
[EPR15240] (ab188869)

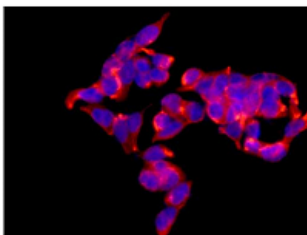
Western blot analysis of immunoprecipitation pellet from Human fetal liver lysate immunoprecipitated using ab188869 at 1/50 dilution.

Secondary: Anti-Rabbit IgG (HRP), specific to the non-reduced form of IgG at 1/1500 dilution.



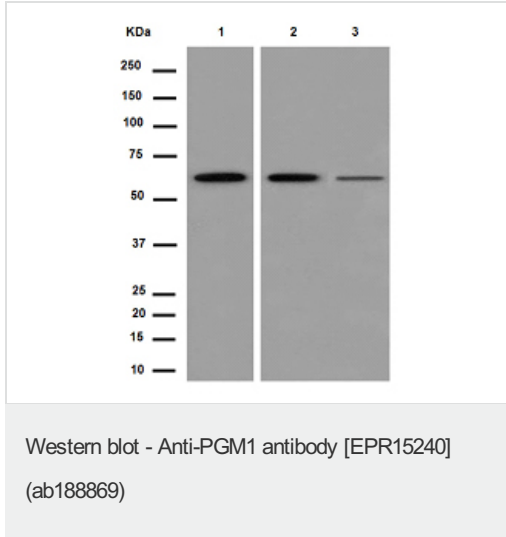
Flow Cytometry - Anti-PGM1 antibody [EPR15240]
(ab188869)

Flow cytometric analysis of 293T cells (paraformaldehyde-fixed, 2%) labeling PGM1 with ab188869 at 1/360 dilution (red) or a rabbit IgG (negative) (green), followed by Goat anti rabbit IgG (FITC) secondary at 1/150 dilution.



Immunocytochemistry/ Immunofluorescence - Anti-PGM1 antibody [EPR15240] (ab188869)

Immunofluorescent analysis of 293T cells (4% Paraformaldehyde-fixed) labeling PGM1 with ab188869 at 1/250 dilution followed by Goat anti rabbit IgG (Alexa Fluor® 555) secondary at 1/200 dilution and counter-stained with DAPI (blue).



All lanes : Anti-PGM1 antibody [EPR15240] (ab188869) at 1/1000 dilution

Lane 1 : Human fetal heart lysate

Lane 2 : Human fetal liver lysate

Lane 3 : 293T lysate

Lysates/proteins at 10 µg per lane.

Secondary

All lanes : Anti-Rabbit IgG (HRP), specific to the non-reduced form of IgG at 1/500 dilution

Predicted band size: 61 kDa

Please note: All products are "FOR RESEARCH USE ONLY. NOT FOR USE IN DIAGNOSTIC PROCEDURES"

Our Abpromise to you: Quality guaranteed and expert technical support

- Replacement or refund for products not performing as stated on the datasheet
- Valid for 12 months from date of delivery
- Response to your inquiry within 24 hours
- We provide support in Chinese, English, French, German, Japanese and Spanish
- Extensive multi-media technical resources to help you
- We investigate all quality concerns to ensure our products perform to the highest standards

If the product does not perform as described on this datasheet, we will offer a refund or replacement. For full details of the Abpromise, please visit <https://www.abcam.com/abpromise> or contact our technical team.

Terms and conditions

- Guarantee only valid for products bought direct from Abcam or one of our authorized distributors