




Product datasheet

Anti-PGRMC1 antibody - C-terminal ab189848

1 Image

Overview

<b>Product name</b>	Anti-PGRMC1 antibody - C-terminal
<b>Description</b>	Rabbit polyclonal to PGRMC1 - C-terminal
<b>Host species</b>	Rabbit
<b>Tested applications</b>	<b>Suitable for:</b> WB, IHC-P
<b>Species reactivity</b>	<b>Reacts with:</b> Mouse, Rat, Human <b>Predicted to work with:</b> Cow, Pig, Orngutan 
<b>Immunogen</b>	Recombinant fragment corresponding to Human PGRMC1 aa 44-195 (C terminal). Sequence: KIVRGDQPAASGDSDDDEPPPLPRLKRRDFTPaelrr FDGVQDPRILMAI NGKVFdvTKGRkFYGPEgPYGVfAGRDASRGLATFC LDKEALKDEYDDLs DLTAAQQETLSDWESQFTFKYHHVgKLLKEGEEPTVY SDEEEPkDESARK ND  Database link: <a href="#">O00264</a>   <a href="#">Run BLAST with</a>  <a href="#">Run BLAST with</a>
<b>Positive control</b>	HepG2, 293T, SW480, OVCAR, H460 cell extracts; Mouse liver and brain tissue extracts

Properties

<b>Form</b>	Liquid
<b>Storage instructions</b>	Shipped at 4°C. Store at +4°C short term (1-2 weeks). Upon delivery aliquot. Store at -20°C long term. Avoid freeze / thaw cycle.
<b>Storage buffer</b>	pH: 7.3 Preservative: 0.02% Sodium azide Constituents: 50% Glycerol, 49% PBS
<b>Purity</b>	Immunogen affinity purified
<b>Clonality</b>	Polyclonal
<b>Isotype</b>	IgG

## Applications

Our [Abpromise guarantee](#) covers the use of **ab189848** in the following tested applications.

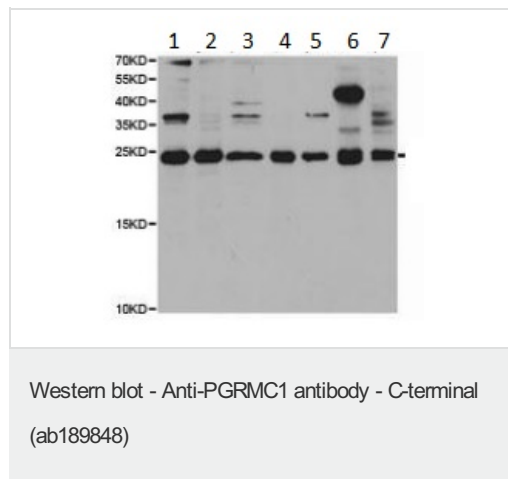
The application notes include recommended starting dilutions; optimal dilutions/concentrations should be determined by the end user.

Application	Abreviews	Notes
WB		1/500 - 1/2000. Predicted molecular weight: 22 kDa.
IHC-P		1/50 - 1/200.

## Target

<b>Function</b>	Receptor for progesterone.
<b>Tissue specificity</b>	Widely expressed, with highest expression in liver and kidney.
<b>Sequence similarities</b>	Belongs to the cytochrome b5 family. MAPR subfamily. Contains 1 cytochrome b5 heme-binding domain.
<b>Domain</b>	The cytochrome b5 heme-binding domain lacks the conserved iron-binding His residues at positions 107 and 131.
<b>Cellular localization</b>	Microsome membrane. Endoplasmic reticulum membrane.

## Images



**All lanes** : Anti-PGRMC1 antibody - C-terminal (ab189848) at 1/500 dilution

**Lane 1** : HepG2 cell extract

**Lane 2** : 293T cell extract

**Lane 3** : SW480 cell extract

**Lane 4** : OVCAR cell extract

**Lane 5** : NCI-H460 cell extract

**Lane 6** : Mouse liver tissue extract

**Lane 7** : Mouse brain tissue extract

**Predicted band size:** 22 kDa

**Please note:** All products are "FOR RESEARCH USE ONLY. NOT FOR USE IN DIAGNOSTIC PROCEDURES"

## Our Abpromise to you: Quality guaranteed and expert technical support

- Replacement or refund for products not performing as stated on the datasheet
- Valid for 12 months from date of delivery

- Response to your inquiry within 24 hours
- We provide support in Chinese, English, French, German, Japanese and Spanish
- Extensive multi-media technical resources to help you
- We investigate all quality concerns to ensure our products perform to the highest standards

If the product does not perform as described on this datasheet, we will offer a refund or replacement. For full details of the Abpromise, please visit <https://www.abcam.com/abpromise> or contact our technical team.

### **Terms and conditions**

---

- Guarantee only valid for products bought direct from Abcam or one of our authorized distributors