




Product datasheet

Anti-PGRMC1 antibody - C-terminal ab194879

2 Images

Overview

Product name	Anti-PGRMC1 antibody - C-terminal
Description	Rabbit polyclonal to PGRMC1 - C-terminal
Host species	Rabbit
Tested applications	Suitable for: IP, WB
Species reactivity	Reacts with: Mouse, Human Predicted to work with: Sheep, Rabbit, Horse, Cow, Cat, Pig, Chimpanzee, Cynomolgus monkey, Rhesus monkey, Orangutan 
Immunogen	Synthetic peptide within Human PGRMC1 aa 145-195 (C terminal). The exact sequence is proprietary. (NP_006658.1). Sequence: LTAAQQETLSDWESQFTFKYHHVGKLLKEGEEPTVYS DEEEPKDESARKN D Database link: O00264  Run BLAST with  Run BLAST with
Positive control	HeLa, Jurkat, 293T and NIH3T3 whole cell lysates.

Properties

Form	Liquid
Storage instructions	Shipped at 4°C. Store at +4°C short term (1-2 weeks). Upon delivery aliquot. Store at -20°C long term. Avoid freeze / thaw cycle.
Storage buffer	Preservative: 0.09% Sodium azide Constituent: 99% Tris citrate/phosphate pH 7 to 8
Purity	Immunogen affinity purified
Purification notes	ab194879 was affinity purified using an epitope specific to PGRMC1 immobilized on solid support.
Clonality	Polyclonal
Isotype	IgG

Applications

Our [Abpromise guarantee](#) covers the use of **ab194879** in the following tested applications.

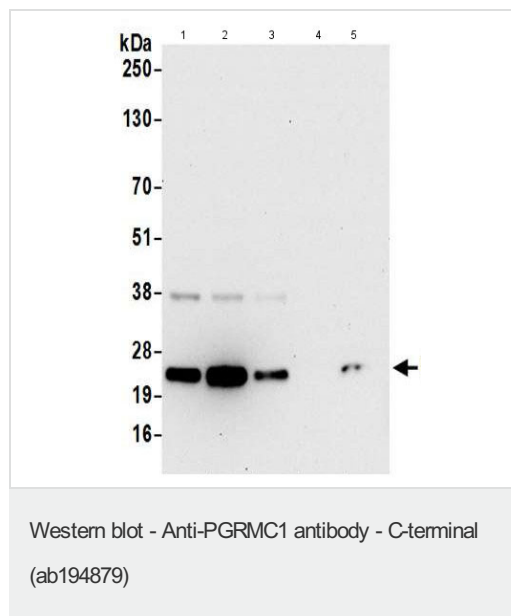
The application notes include recommended starting dilutions; optimal dilutions/concentrations should be determined by the end user.

Application	Abreviews	Notes
IP		Use at 2-10 µg/mg of lysate.
WB		1/1000 - 1/5000. Predicted molecular weight: 22 kDa.

Target

Function	Receptor for progesterone.
Tissue specificity	Widely expressed, with highest expression in liver and kidney.
Sequence similarities	Belongs to the cytochrome b5 family. MAPR subfamily. Contains 1 cytochrome b5 heme-binding domain.
Domain	The cytochrome b5 heme-binding domain lacks the conserved iron-binding His residues at positions 107 and 131.
Cellular localization	Microsome membrane. Endoplasmic reticulum membrane.

Images



All lanes : Anti-PGRMC1 antibody - C-terminal (ab194879) at 0.4 µg/ml

Lane 1 : HeLa whole cell lysate

Lane 2 : 293T whole cell lysate

Lane 3 : Jurkat whole cell lysate

Lane 4 : TCMK-1 whole cell lysate

Lane 5 : NIH3T3 whole cell lysate

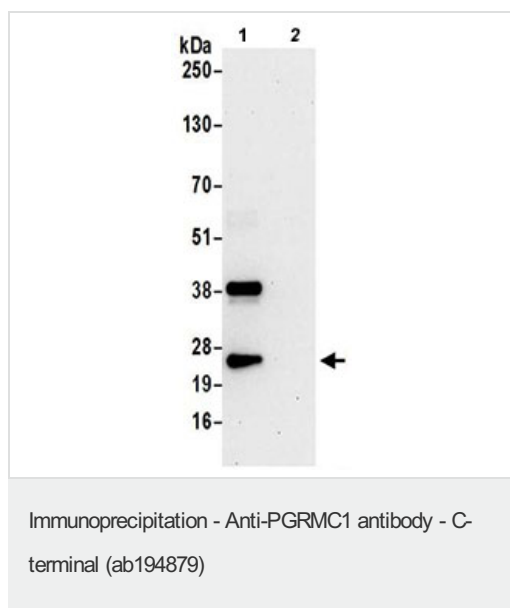
Lysates/proteins at 50 µg per lane.

Developed using the ECL technique.

Predicted band size: 22 kDa

Exposure time: 30 seconds

Lysates in lanes 1-3 were prepared using RIPA lysis buffer. Lysates in lanes 4-5 were prepared using NETN lysis buffer.



Detection of PGRMC1 in immunoprecipitates of 293T whole cell lysate prepared using RIPA lysis buffer (1 mg for IP, 20% of IP loaded) using ab194879 at 6 μ g/mg lysate for IP and at 1 μ g/ml for subsequent Western blot detection (Lane 1). Lane 2 represents control IgG IP.

Detection: Chemiluminescence with an exposure time of 30 seconds.

Please note: All products are "FOR RESEARCH USE ONLY. NOT FOR USE IN DIAGNOSTIC PROCEDURES"

Our Abpromise to you: Quality guaranteed and expert technical support

- Replacement or refund for products not performing as stated on the datasheet
- Valid for 12 months from date of delivery
- Response to your inquiry within 24 hours
- We provide support in Chinese, English, French, German, Japanese and Spanish
- Extensive multi-media technical resources to help you
- We investigate all quality concerns to ensure our products perform to the highest standards

If the product does not perform as described on this datasheet, we will offer a refund or replacement. For full details of the Abpromise, please visit <https://www.abcam.com/abpromise> or contact our technical team.

Terms and conditions

- Guarantee only valid for products bought direct from Abcam or one of our authorized distributors