

## Product datasheet

# Anti-PGS1 antibody ab235379

[2 Images](#)

### Overview

---

<b>Product name</b>	Anti-PGS1 antibody
<b>Description</b>	Rabbit polyclonal to PGS1
<b>Host species</b>	Rabbit
<b>Tested applications</b>	<b>Suitable for:</b> WB, IHC-P
<b>Species reactivity</b>	<b>Reacts with:</b> Mouse, Human
<b>Immunogen</b>	Recombinant fragment corresponding to Human PGS1 aa 110-400. Database link: <a href="#">Q32NB8</a>
<b>Positive control</b>	WB: Mouse liver, spleen, thymus and kidney tissue lysate; HeLa, jurkat, HepG2 and THP-1 whole cell lysate. IHC-P: Human placenta tissue.
<b>General notes</b>	<p>Reproducibility is key to advancing scientific discovery and accelerating scientists' next breakthrough.</p> <p>Abcam is leading the way with our range of recombinant antibodies, knockout-validated antibodies and knockout cell lines, all of which support improved reproducibility.</p> <p>We are also planning to innovate the way in which we present recommended applications and species on our product datasheets, so that only applications &amp; species that have been tested in our own labs, our suppliers or by selected trusted collaborators are covered by our Abpromise™ guarantee.</p> <p>In preparation for this, we have started to update the applications &amp; species that this product is Abpromise guaranteed for.</p> <p>We are also updating the applications &amp; species that this product has been “predicted to work with,” however this information is not covered by our Abpromise guarantee.</p> <p>Applications &amp; species from publications and Abreviews that have not been tested in our own labs or in those of our suppliers are not covered by the Abpromise guarantee.</p> <p>Please check that this product meets your needs before purchasing. If you have any questions, special requirements or concerns, please send us an inquiry and/or contact our Support team ahead of purchase. Recommended alternatives for this product can be found below, as well as customer reviews and Q&amp;As.</p>

### Properties

---

<b>Form</b>	Liquid
-------------	--------

<b>Storage instructions</b>	Shipped at 4°C. Store at +4°C short term (1-2 weeks). Upon delivery aliquot. Store at -20°C long term. Avoid freeze / thaw cycle.
<b>Storage buffer</b>	pH: 7.40 Constituents: PBS, 50% Glycerol (glycerin, glycerine), 0.03% Proclin 300
<b>Purity</b>	Protein G purified
<b>Purification notes</b>	Purity >95%
<b>Clonality</b>	Polyclonal
<b>Isotype</b>	IgG

## Applications

Our [Abpromise guarantee](#) covers the use of **ab235379** in the following tested applications.

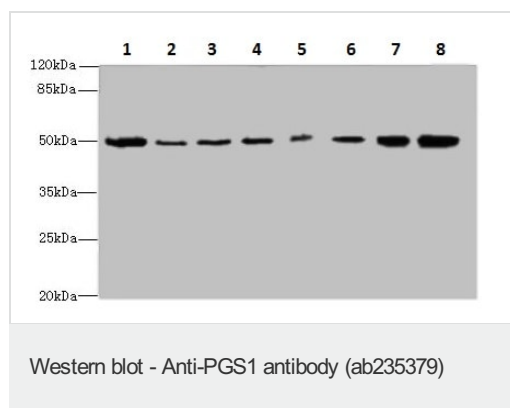
The application notes include recommended starting dilutions; optimal dilutions/concentrations should be determined by the end user.

Application	Abreviews	Notes
WB		1/1000 - 1/5000.
IHC-P		1/20 - 1/200.

## Target

<b>Function</b>	Functions in the biosynthesis of the anionic phospholipids phosphatidylglycerol and cardiolipin.
<b>Pathway</b>	Phospholipid metabolism; phosphatidylglycerol biosynthesis; phosphatidylglycerol from CDP-diacylglycerol: step 1/2.
<b>Sequence similarities</b>	Belongs to the CDP-alcohol phosphatidyltransferase class-II family. Contains 2 PLD phosphodiesterase domains.
<b>Cellular localization</b>	Mitochondrion.

## Images



**All lanes** : Anti-PGS1 antibody (ab235379) at 1/500 dilution

**Lane 1** : Mouse liver tissue lysate

**Lane 2** : HeLa (human epithelial cell line from cervix adenocarcinoma) whole cell lysate

**Lane 3** : Jurkat (human T cell leukemia cell line from peripheral blood) whole cell lysate

**Lane 4** : HepG2 (human liver hepatocellular carcinoma cell line) whole cell lysate

**Lane 5** : THP-1 (human monocytic leukemia cell line) whole cell lysate

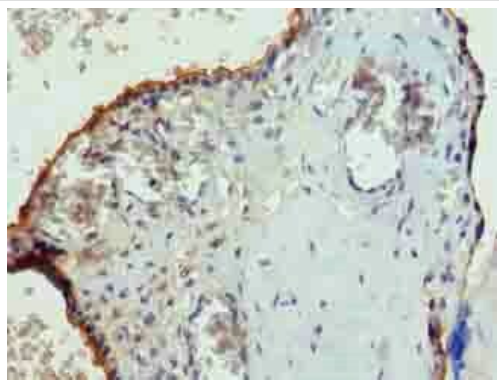
**Lane 6** : Mouse spleen tissue lysate

**Lane 7** : Mouse thymus tissue lysate

**Lane 8** : Mouse kidney tissue lysate

### Secondary

**All lanes** : Goat polyclonal to Rabbit IgG at 1/10000 dilution



Paraffin-embedded human placenta tissue stained for PGS1 using ab235379 at 1/100 dilution in immunohistochemical analysis.

Immunohistochemistry (Formalin/PFA-fixed paraffin-embedded sections) - Anti-PGS1 antibody (ab235379)

**Please note:** All products are "FOR RESEARCH USE ONLY. NOT FOR USE IN DIAGNOSTIC PROCEDURES"

### Our Abpromise to you: Quality guaranteed and expert technical support

---

- Replacement or refund for products not performing as stated on the datasheet
- Valid for 12 months from date of delivery
- Response to your inquiry within 24 hours
- We provide support in Chinese, English, French, German, Japanese and Spanish
- Extensive multi-media technical resources to help you
- We investigate all quality concerns to ensure our products perform to the highest standards

If the product does not perform as described on this datasheet, we will offer a refund or replacement. For full details of the Abpromise, please visit <https://www.abcam.com/abpromise> or contact our technical team.

### Terms and conditions

---

- Guarantee only valid for products bought direct from Abcam or one of our authorized distributors