

Product datasheet

Phalloidin-iFluor 350 Reagent ab176751

★★★★★ 1 Abreviews 2 Images

Overview

<b>Product name</b>	Phalloidin-iFluor 350 Reagent
<b>Sample type</b>	Adherent cells, Suspension cells
<b>Assay type</b>	Cell-based (qualitative)
<b>Product overview</b>	Phalloidin-iFluor 350 Reagent (ab176751) is one of a series of phalloidin conjugates that bind to actin filaments, also known as F-actin. Phalloidin-iFluor 350 can be easily detected with a fluorescent microscope at Ex/Em = 353/442 nm.

Phalloidin conjugates are convenient probes for labeling, identifying and quantifying animal or plant actin filaments in formaldehyde-fixed and permeabilized tissue sections, cell cultures or cell-free experiments. They can also be used in paraffin-embedded samples that have been deparaffinized.

Review other popular phalloidin dye conjugates, including [Phalloidin-iFluor 488](#), [Phalloidin-iFluor 647](#), [Phalloidin-iFluor 594](#), [Phalloidin-iFluor 555](#), and [Rhodamine Phalloidin](#), search the website to see [all phalloidin conjugates](#), or read the [phalloidin staining protocol](#).

<b>Notes</b>	<p>Staining fixed cell or tissue samples with phalloidin conjugates is very simple; it requires a single 20-90 min incubation with the phalloidin, followed by 3 short wash steps. Phalloidin staining can be combined with antibody-based staining by adding the phalloidin conjugate during either the primary or secondary antibody incubation step.</p> <p>When used in unfixed samples, phalloidin binding leads to a decrease in the disassociation rate of actin subunits from the ends of actin filaments, essentially stabilizing actin filaments through the prevention of filament depolymerisation.</p>
--------------	---

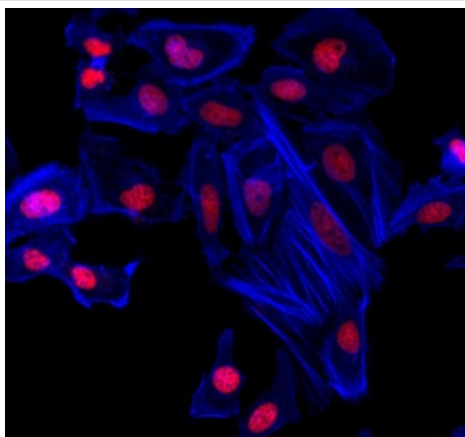
<b>Platform</b>	Fluorescence microscope
-----------------	-------------------------

Properties

<b>Storage instructions</b>	Store at -20°C. Please refer to protocols.
-----------------------------	--

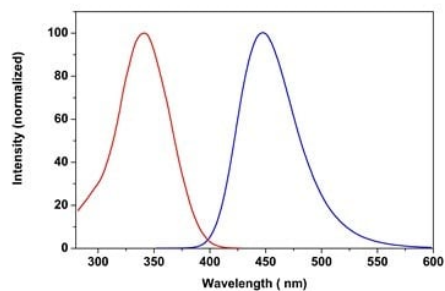
Components	300 tests
Phalloidin-iFluor 350 Conjugate	1 x 300 tests

## Images



CytoPainter Phalloidin-iFluor 350 Reagent  
(ab176751)

Actin filaments staining in HeLa cells. Actin filaments (blue) were stained with CytoPainter Phalloidin-iFluor 350 reagent (ab176751).



CytoPainter Phalloidin-iFluor 350 Reagent  
(ab176751)

Excitation and emission spectra of phalloidin-iFluor 350 reagent.

**Please note:** All products are "FOR RESEARCH USE ONLY. NOT FOR USE IN DIAGNOSTIC PROCEDURES"

### Our Abpromise to you: Quality guaranteed and expert technical support

- Replacement or refund for products not performing as stated on the datasheet
- Valid for 12 months from date of delivery
- Response to your inquiry within 24 hours
- We provide support in Chinese, English, French, German, Japanese and Spanish
- Extensive multi-media technical resources to help you
- We investigate all quality concerns to ensure our products perform to the highest standards

If the product does not perform as described on this datasheet, we will offer a refund or replacement. For full details of the Abpromise, please visit <https://www.abcam.com/abpromise> or contact our technical team.

## Terms and conditions

---

- Guarantee only valid for products bought direct from Abcam or one of our authorized distributors