


Product datasheet

Anti-PHF23 antibody ab264292

3 Images

Overview

Product name	Anti-PHF23 antibody
Description	Rabbit polyclonal to PHF23
Host species	Rabbit
Tested applications	Suitable for: IP, IHC-P, WB
Species reactivity	Reacts with: Human Predicted to work with: Cow 
Immunogen	Synthetic peptide within Human PHF23 aa 353-403. The exact sequence is proprietary. NP_077273.2 Database link: Q9BUL5
Positive control	IHC-P: Human prostate carcinoma. WB: HeLa whole cell lysate. IP: HeLa whole cell lysate.
General notes	<p>The Life Science industry has been in the grips of a reproducibility crisis for a number of years. Abcam is leading the way in addressing this with our range of recombinant monoclonal antibodies and knockout edited cell lines for gold-standard validation. Please check that this product meets your needs before purchasing.</p> <p>If you have any questions, special requirements or concerns, please send us an inquiry and/or contact our Support team ahead of purchase. Recommended alternatives for this product can be found below, along with publications, customer reviews and Q&As</p>

Properties

Form	Liquid
Storage instructions	Shipped at 4°C. Store at +4°C short term (1-2 weeks). Upon delivery aliquot. Store at -20°C. Avoid freeze / thaw cycle.
Storage buffer	pH: 7 Preservative: 0.09% Sodium azide Constituent: Tris citrate/phosphate
Purity	pH 7 to 8 Immunogen affinity purified
Clonality	Polyclonal
Isotype	IgG

Applications

The Abpromise guarantee Our [Abpromise guarantee](#) covers the use of ab264292 in the following tested applications. The application notes include recommended starting dilutions; optimal dilutions/concentrations should be determined by the end user.

Application	Abreviews	Notes
IP		Use at 10 µg/mg of lysate.
IHC-P		1/500 - 1/2000. Perform heat mediated antigen retrieval with citrate buffer pH 6 before commencing with IHC staining protocol.
WB		1/2000 - 1/10000.

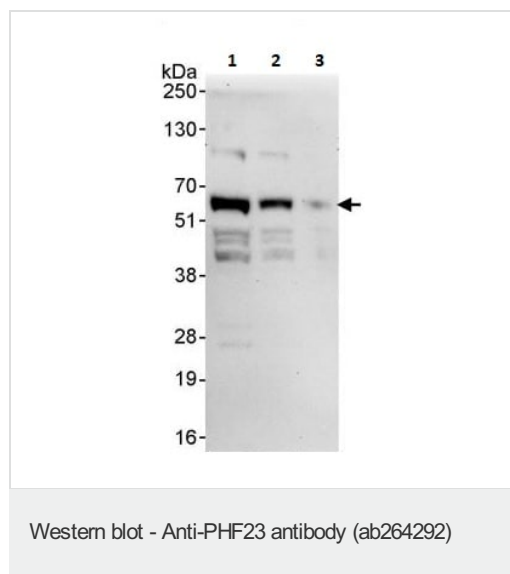
Target

Involvement in disease Note=A chromosomal aberration involving PHF23 is found in a patient with acute myeloid leukemia (AML). Translocation t(11;17)(p15;p13) with NUP98.

Sequence similarities Belongs to the PHF23 family.
Contains 1 PHD-type zinc finger.

Post-translational modifications Phosphorylated upon DNA damage, probably by ATM or ATR.

Images



All lanes : Anti-PHF23 antibody (ab264292) at 0.1 µg/ml

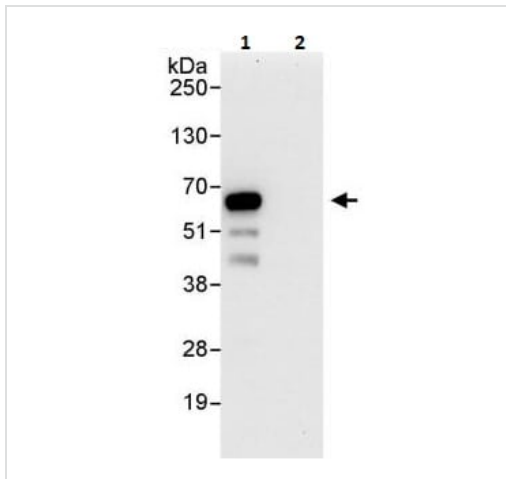
Lane 1 : HeLa whole cell lysate at 50 µg

Lane 2 : HeLa whole cell lysate at 15 µg

Lane 3 : HeLa whole cell lysate at 5 µg

Developed using the ECL technique.

Exposure time: 30 seconds



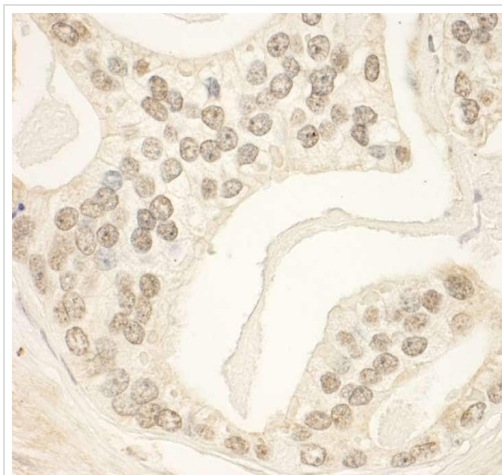
Immunoprecipitation - Anti-PHF23 antibody
(ab264292)

PHF23 was immunoprecipitated from 1mg of HeLa (Human epithelial cell line from cervix adenocarcinoma) whole cell lysate with ab264292 at 10 µg/mg lysate. Western blot was performed from the immunoprecipitate using ab264292 at 0.4 µg/ml.

Lane 1: ab264292 IP in HeLa whole cell lysate.

Lane 2: Control IgG.

Exposure time: 30 secs.



Immunohistochemistry (Formalin/PFA-fixed paraffin-embedded sections) - Anti-PHF23 antibody
(ab264292)

Immunohistochemical analysis of formalin-fixed, paraffin-embedded human prostate carcinoma tissue labeling PHF23 with ab264292 at 1/1,000 dilution. Detection: DAB.

Epitope retrieval with citrate buffer pH 6.0 is recommended for FFPE tissue sections.

Please note: All products are "FOR RESEARCH USE ONLY. NOT FOR USE IN DIAGNOSTIC PROCEDURES"

Our Promise to you: Quality guaranteed and expert technical support

- Replacement or refund for products not performing as stated on the datasheet
- Valid for 12 months from date of delivery
- Response to your inquiry within 24 hours
- We provide support in Chinese, English, French, German, Japanese and Spanish
- Extensive multi-media technical resources to help you
- We investigate all quality concerns to ensure our products perform to the highest standards

If the product does not perform as described on this datasheet, we will offer a refund or replacement. For full details of the Abpromise, please visit <https://www.abcam.com/abpromise> or contact our technical team.

Terms and conditions

- Guarantee only valid for products bought direct from Abcam or one of our authorized distributors