

Product datasheet

Anti-PHGDH/Malate dehydrogenase antibody ab125865

KO VALIDATED

3 Images

Overview

Product name	Anti-PHGDH/Malate dehydrogenase antibody
Description	Rabbit polyclonal to PHGDH/Malate dehydrogenase
Host species	Rabbit
Tested applications	Suitable for: WB, IHC-P
Species reactivity	Reacts with: Human
Immunogen	Recombinant fragment corresponding to Human PHGDH/Malate dehydrogenase aa 209-397 (internal sequence). Database link: NP_006614
Positive control	293T, Raji, A431 and Jurkat whole cell lysates; Human breast carcinoma tissue.
General notes	This product was previously labelled as PHGDH

Properties

Form	Liquid
Storage instructions	Shipped at 4°C. Upon delivery aliquot and store at -20°C or -80°C. Avoid repeated freeze / thaw cycles.
Storage buffer	pH: 7.00 Preservative: 0.025% Proclin Constituents: PBS, 1% BSA, 20% Glycerol
Purity	Immunogen affinity purified
Purification notes	ab125865 is purified by antigen-affinity chromatography.
Clonality	Polyclonal
Isotype	IgG

Applications

Our [Abpromise guarantee](#) covers the use of **ab125865** in the following tested applications.

The application notes include recommended starting dilutions; optimal dilutions/concentrations should be determined by the end user.

Application	Abreviews	Notes
WB		1/5000 - 1/20000. Predicted molecular weight: 57 kDa.
IHC-P		1/100 - 1/500. Perform heat mediated antigen retrieval with citrate buffer pH 6 before commencing with IHC staining protocol.

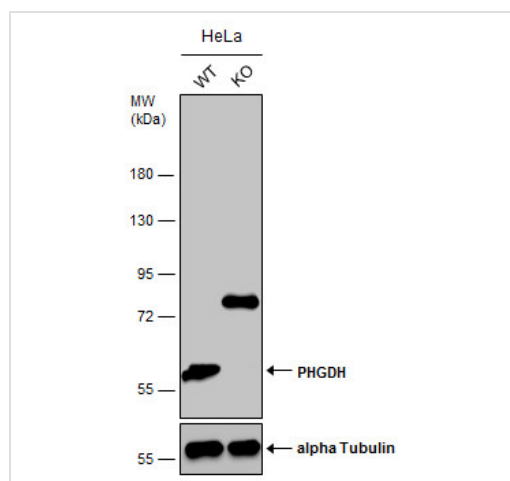
Target

Pathway Amino-acid biosynthesis; L-serine biosynthesis; L-serine from 3-phospho-D-glycerate: step 1/3.

Involvement in disease Defects in PHGDH are the cause of phosphoglycerate dehydrogenase deficiency (PHGDH deficiency) [MIM:601815]. It is characterized by congenital microcephaly, psychomotor retardation, and seizures.

Sequence similarities Belongs to the D-isomer specific 2-hydroxyacid dehydrogenase family.

Images



Western blot - Anti-PHGDH/Malate dehydrogenase antibody (ab125865)

All lanes : Anti-PHGDH/Malate dehydrogenase antibody (ab125865) at 1/1000 dilution

Lane 1 : WT HeLa cell extract

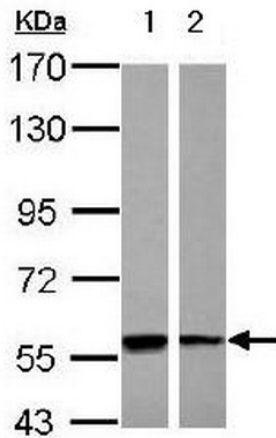
Lane 2 : PHGDH/Malate dehydrogenase Knockout HeLa cell extracts

Lysates/proteins at 30 µg per lane.

Secondary

All lanes : HRP-conjugated anti-rabbit IgG

Predicted band size: 57 kDa



Western blot - Anti-PHGDH/Malate dehydrogenase antibody (ab125865)

All lanes : Anti-PHGDH/Malate dehydrogenase antibody (ab125865) at 1/10000 dilution

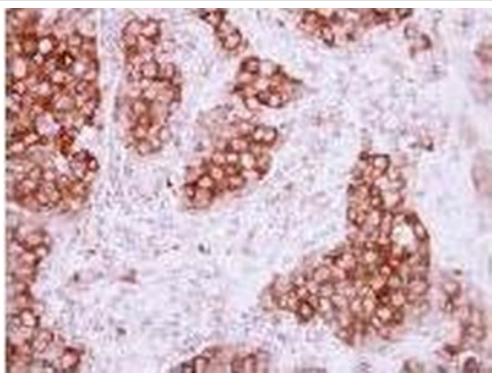
Lane 1 : A431 whole cell lysate

Lane 2 : Raji whole cell lysate

Lysates/proteins at 30 µg per lane.

Predicted band size: 57 kDa

7.5% SDS PAGE



Immunohistochemistry (Formalin/PFA-fixed paraffin-embedded sections) - Anti-PHGDH/Malate dehydrogenase antibody (ab125865)

ab125865, at 1/250, staining PHGDH/Malate dehydrogenase in formalin fixed, paraffin embedded Human breast carcinoma tissue by Immunohistochemistry.

Please note: All products are "FOR RESEARCH USE ONLY. NOT FOR USE IN DIAGNOSTIC PROCEDURES"

Our Abpromise to you: Quality guaranteed and expert technical support

- Replacement or refund for products not performing as stated on the datasheet
- Valid for 12 months from date of delivery

- Response to your inquiry within 24 hours
- We provide support in Chinese, English, French, German, Japanese and Spanish
- Extensive multi-media technical resources to help you
- We investigate all quality concerns to ensure our products perform to the highest standards

If the product does not perform as described on this datasheet, we will offer a refund or replacement. For full details of the Abpromise, please visit <https://www.abcam.com/abpromise> or contact our technical team.

Terms and conditions

- Guarantee only valid for products bought direct from Abcam or one of our authorized distributors