

Product datasheet

Anti-Phospho SQ/TQ ATM/ATR Substrate antibody  
ab130947

2 References 1 Image

Overview

<b>Product name</b>	Anti-Phospho SQ/TQ ATM/ATR Substrate antibody
<b>Description</b>	Rabbit polyclonal to Phospho SQ/TQ ATM/ATR Substrate
<b>Host species</b>	Rabbit
<b>Specificity</b>	Ab130947 recognizes proteins phosphorylated on SQ/TQ motifs (ATM/ATR kinase consensus phosphorylation site motif)
<b>Tested applications</b>	<b>Suitable for:</b> WB
<b>Species reactivity</b>	<b>Reacts with:</b> Human
<b>Immunogen</b>	Synthetic peptide corresponding to Human Phospho SQ/TQ ATM/ATR Substrate aa 2600-2700 (phospho S2609 + T2609) conjugated to keyhole limpet haemocyanin. Database link: <a href="#">P78527</a>
<b>Positive control</b>	This antibody gave a positive signal in Western Blot in the following cell line: HeLa untreated and UV treated whole cell
<b>General notes</b>	<p>The Life Science industry has been in the grips of a reproducibility crisis for a number of years. Abcam is leading the way in addressing this with our range of recombinant monoclonal antibodies and knockout edited cell lines for gold-standard validation. Please check that this product meets your needs before purchasing.</p> <p>If you have any questions, special requirements or concerns, please send us an inquiry and/or contact our Support team ahead of purchase. Recommended alternatives for this product can be found below, along with publications, customer reviews and Q&amp;As</p>

Properties

<b>Form</b>	Liquid
<b>Storage instructions</b>	Shipped at 4°C. Store at +4°C short term (1-2 weeks). Upon delivery aliquot. Store at -20°C or -80°C. Avoid freeze / thaw cycle.
<b>Storage buffer</b>	<p>pH: 7.40</p> <p>Preservative: 0.02% Sodium azide</p> <p>Constituent: PBS</p> <p>Batches of this product that have a concentration &lt; 1mg/ml may have BSA added as a stabilising</p>

agent. If you would like information about the formulation of a specific lot, please contact our scientific support team who will be happy to help.

<b>Purity</b>	Immunogen affinity purified
<b>Clonality</b>	Polyclonal
<b>Isotype</b>	IgG

## Applications

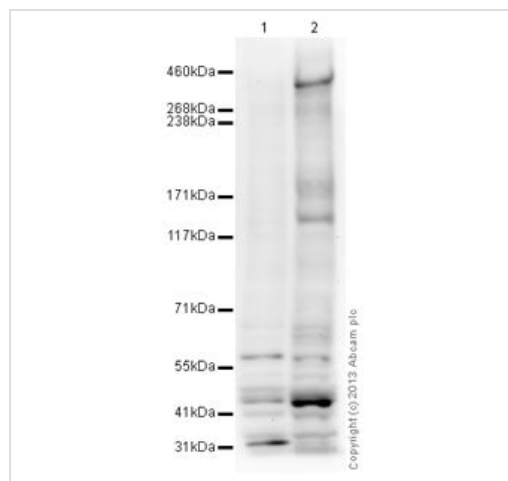
**The Abpromise guarantee** Our [Abpromise guarantee](#) covers the use of ab130947 in the following tested applications. The application notes include recommended starting dilutions; optimal dilutions/concentrations should be determined by the end user.

Application	Abreviews	Notes
<b>WB</b>		Use a concentration of 1 µg/ml. Detects a band of approximately 450 kDa (predicted molecular weight: 469 kDa). An increase in signal is observed upon UV treatment

## Target

**Relevance** Several protein kinases mediate cellular responses to DNA damage. This includes the serine/threonine kinases ATM (ataxia telangiectasia mutated) and ATR (ATM and Rad3-related). In response to DNA damage ATM and ATR phosphorylate a large range of proteins on Serine (S) or Threonine (T) residues next to a Glutamine (Q) residue, so called SQ or TQ consensus sites.

## Images



Western blot - Anti-Phospho SQ/TQ ATM/ATR Substrate antibody (ab130947)

**All lanes :** Anti-Phospho SQ/TQ ATM/ATR Substrate antibody (ab130947) at 1 µg/ml

**Lane 1 :** HeLa (Human epithelial carcinoma cell line) Whole Cell Lysate

**Lane 2 :** HeLa Whole Cell Lysate - UV Irradiated

Lysates/proteins at 25 µg per lane.

### Secondary

**All lanes :** Goat Anti-Rabbit IgG H&L (HRP) (ab97051) at 1/10000 dilution

Developed using the ECL technique.

Performed under reducing conditions.

**Predicted band size:** 469 kDa

**Observed band size:** 450 kDa

**Exposure time:** 8 minutes

This blot was produced using a 3-8% Tris Acetate gel under the TA buffer system. The gel was run at 150V for 60 minutes before being transferred onto a Nitrocellulose membrane at 30V for 70 minutes. The membrane was then blocked for an hour using 5% Bovine Serum Albumin before being incubated with ab130947 overnight at 4°C. Antibody binding was detected using an anti-rabbit antibody conjugated to HRP, and visualised using ECL development solution.

**Please note:** All products are "FOR RESEARCH USE ONLY. NOT FOR USE IN DIAGNOSTIC PROCEDURES"

#### **Our Abpromise to you: Quality guaranteed and expert technical support**

---

- Replacement or refund for products not performing as stated on the datasheet
- Valid for 12 months from date of delivery
- Response to your inquiry within 24 hours
  
- We provide support in Chinese, English, French, German, Japanese and Spanish
- Extensive multi-media technical resources to help you
- We investigate all quality concerns to ensure our products perform to the highest standards

If the product does not perform as described on this datasheet, we will offer a refund or replacement. For full details of the Abpromise, please visit <https://www.abcam.com/abpromise> or contact our technical team.

#### **Terms and conditions**

---

- Guarantee only valid for products bought direct from Abcam or one of our authorized distributors