




Product datasheet

Anti-Phospholipase A2 XII/PLA2G12A antibody [7C7C9] ab201950

[3 Images](#)

Overview

Product name	Anti-Phospholipase A2 XII/PLA2G12A antibody [7C7C9]
Description	Mouse monoclonal [7C7C9] to Phospholipase A2 XII/PLA2G12A
Host species	Mouse
Tested applications	Suitable for: WB, Flow Cyt
Species reactivity	Reacts with: Human Predicted to work with: Mouse 
Immunogen	Recombinant full length protein corresponding to Human Phospholipase A2 XII/PLA2G12A aa 21-189. Recombinant full length mature expressed in E coli Sequence: RCQEQAQTTD WRATLKTIRN GVHKIDTYLN AALDLLGGED GLCQYKCS DG SKPFPRYG YK PSPPNGCGSP LFGVHLNIGI PSLTKCCNQH DRCYETCGKS KNDCDEEFQY CLSKICRDVQ KTLGLTQHVQ ACETTVELLF DSVIHLGCKP YLDSQRAACR CHYEEKTDL Database link: Q9BZM1  Run BLAST with  Run BLAST with
Positive control	Human Phospholipase A2 XII/PLA2G12A (AA: 21-189) recombinant protein; Phospholipase A2 XII/PLA2G12A (AA: 21-189)-hlgGFc transfected HEK293 cell lysate and HeLa cells.
General notes	This product was previously labelled as Phospholipase A2 XII

Properties

Form	Liquid
Storage instructions	Shipped at 4°C. Store at +4°C short term (1-2 weeks). Upon delivery aliquot. Store at -20°C long term. Avoid freeze / thaw cycle.
Storage buffer	Preservative: 0.05% Sodium azide Constituent: 99% PBS

Purity	Protein G purified
Purification notes	Purified from tissue culture supernatant.
Clonality	Monoclonal
Clone number	7C7C9
Isotype	IgG1

Applications

Our [Abpromise guarantee](#) covers the use of **ab201950** in the following tested applications.

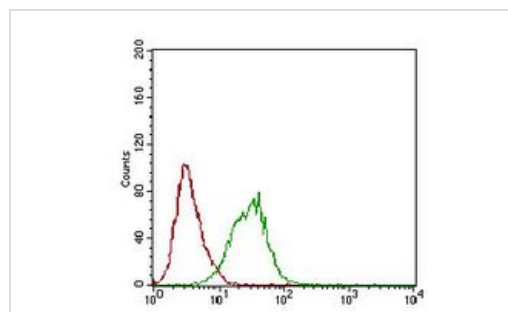
The application notes include recommended starting dilutions; optimal dilutions/concentrations should be determined by the end user.

Application	Abreviews	Notes
WB		1/500 - 1/2000. Predicted molecular weight: 21 kDa.
Flow Cyt		1/200 - 1/400. ab170190 - Mouse monoclonal IgG1, is suitable for use as an isotype control with this antibody.

Target

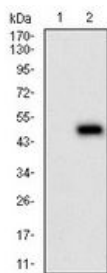
Function	PA2 catalyzes the calcium-dependent hydrolysis of the 2-acyl groups in 3-sn-phosphoglycerides. Does not exhibit detectable activity toward sn-2-arachidonoyl- or linoleoyl-phosphatidylcholine or -phosphatidylethanolamine.
Tissue specificity	Abundantly expressed in heart, skeletal muscle, kidney, liver and pancreas.
Sequence similarities	Belongs to the phospholipase A2 family.
Cellular localization	Secreted. Cytoplasm.

Images



Flow cytometric analysis of HeLa cells labeling Phospholipase A2 XII/PLA2G12A (green) using ab201950 at 1/200 dilution and negative control (red).

Flow Cytometry - Anti-Phospholipase A2 XII/PLA2G12A antibody [7C7C9] (ab201950)



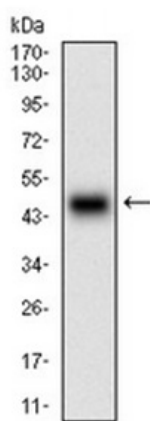
Western blot - Anti-Phospholipase A2 XII/PLA2G12A antibody [7C7C9] (ab201950)

All lanes : Anti-Phospholipase A2 XII/PLA2G12A antibody [7C7C9] (ab201950) at 1/500 dilution

Lane 1 : HEK293 cell lysate

Lane 2 : Phospholipase A2 XII/PLA2G12A (AA: 21-189)-hlgGFc transfected HEK293 cell lysate

Predicted band size: 21 kDa



Western blot - Anti-Phospholipase A2 XII/PLA2G12A antibody [7C7C9] (ab201950)

Anti-Phospholipase A2 XII/PLA2G12A antibody [7C7C9] (ab201950) at 1/500 dilution + Human Phospholipase A2 XII/PLA2G12A (AA: 21-189) recombinant protein.

Predicted band size: 21 kDa

Please note: All products are "FOR RESEARCH USE ONLY. NOT FOR USE IN DIAGNOSTIC PROCEDURES"

Our Abpromise to you: Quality guaranteed and expert technical support

- Replacement or refund for products not performing as stated on the datasheet
- Valid for 12 months from date of delivery
- Response to your inquiry within 24 hours
- We provide support in Chinese, English, French, German, Japanese and Spanish
- Extensive multi-media technical resources to help you
- We investigate all quality concerns to ensure our products perform to the highest standards

If the product does not perform as described on this datasheet, we will offer a refund or replacement. For full details of the Abpromise, please visit <https://www.abcam.com/abpromise> or contact our technical team.

Terms and conditions

- Guarantee only valid for products bought direct from Abcam or one of our authorized distributors