

Product datasheet

Anti-Phospholipase C beta 2/PLCB2 antibody - C-terminal ab220285

[2 Images](#)

Overview

Product name	Anti-Phospholipase C beta 2/PLCB2 antibody - C-terminal
Description	Rabbit polyclonal to Phospholipase C beta 2/PLCB2 - C-terminal
Host species	Rabbit
Tested applications	Suitable for: ICC/IF, WB
Species reactivity	Reacts with: Human
Immunogen	Recombinant fragment corresponding to Human Phospholipase C beta 2/PLCB2 aa 1095-1174. Sequence: ERHQEKLEEKQAACLEQIREMEKQFQKEALAEYEARM KGLEAEVKESVRA CLRTCFPSEAKDKPERACECPPELCEQDPL Database link: Q00722 Run BLAST with Run BLAST with
Positive control	ICC/IF: PC-3 cells.
General notes	This product was previously labelled as Phospholipase C beta 2

Properties

Form	Liquid
Storage instructions	Shipped at 4°C. Store at +4°C short term (1-2 weeks). Upon delivery aliquot. Store at -20°C long term. Avoid freeze / thaw cycle.
Storage buffer	pH: 7.20 Preservative: 0.02% Sodium azide Constituents: 40% Glycerol, 59% PBS
Purity	Immunogen affinity purified
Clonality	Polyclonal
Isotype	IgG

Applications

Our [Abpromise guarantee](#) covers the use of **ab220285** in the following tested applications.

The application notes include recommended starting dilutions; optimal dilutions/concentrations should be determined by the end user.

Application	Abreviews	Notes
ICC/IF		Use a concentration of 1 - 4 µg/ml. Fixation/Permeabilization: PFA/Triton X-100.
WB		Use a concentration of 0.4 µg/ml. Predicted molecular weight: 134 kDa.

Target

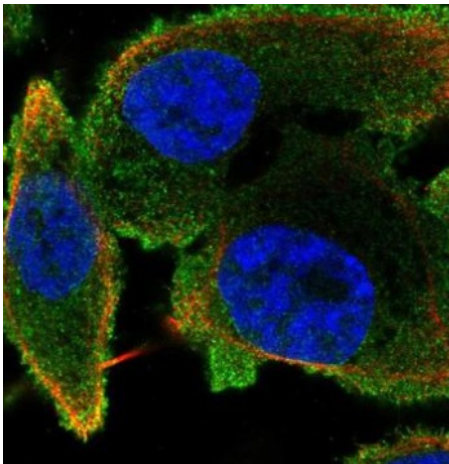
Function

The production of the second messenger molecules diacylglycerol (DAG) and inositol 1,4,5-trisphosphate (IP3) is mediated by activated phosphatidylinositol-specific phospholipase C enzymes.

Sequence similarities

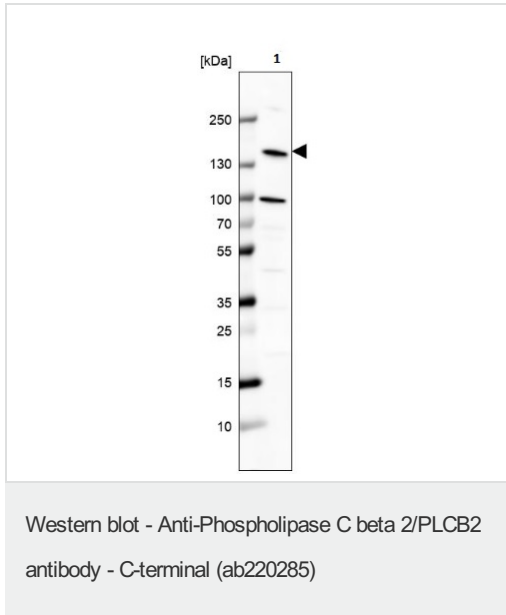
Contains 1 C2 domain.
Contains 1 PI-PLC X-box domain.
Contains 1 PI-PLC Y-box domain.

Images



Immunofluorescent analysis of PFA fixed, triton X-100 permeabilized PC-3 cells labeling Phospholipase C beta 2/PLCB2 with ab220285 at 4 µg/mL (green).

Immunocytochemistry/ Immunofluorescence - Anti-Phospholipase C beta 2/PLCB2 antibody - C-terminal (ab220285)



Anti-Phospholipase C beta 2/PLCB2 antibody - C-terminal (ab220285) at 0.4 µg/ml + Human cell line HEL

Predicted band size: 134 kDa

Please note: All products are "FOR RESEARCH USE ONLY. NOT FOR USE IN DIAGNOSTIC PROCEDURES"

Our Abpromise to you: Quality guaranteed and expert technical support

- Replacement or refund for products not performing as stated on the datasheet
- Valid for 12 months from date of delivery
- Response to your inquiry within 24 hours
- We provide support in Chinese, English, French, German, Japanese and Spanish
- Extensive multi-media technical resources to help you
- We investigate all quality concerns to ensure our products perform to the highest standards

If the product does not perform as described on this datasheet, we will offer a refund or replacement. For full details of the Abpromise, please visit <https://www.abcam.com/abpromise> or contact our technical team.

Terms and conditions

- Guarantee only valid for products bought direct from Abcam or one of our authorized distributors