


Product datasheet

Anti-Phospholipase C gamma 1/PLC-gamma-1 antibody ab52200

[2 Images](#)

Overview

Product name	Anti-Phospholipase C gamma 1/PLC-gamma-1 antibody
Description	Rabbit polyclonal to Phospholipase C gamma 1/PLC-gamma-1
Host species	Rabbit
Specificity	This antibody detects endogenous levels of total Phospholipase C gamma 1/PLC-gamma-1 protein.
Tested applications	Suitable for: WB, IHC-P, ELISA
Species reactivity	Reacts with: Human Predicted to work with: Mouse, Rat 
Immunogen	Synthetic peptide corresponding to Human Phospholipase C gamma 1/PLC-gamma-1.
Positive control	Human breast carcinoma tissue (IHC-P).
General notes	<p>Previously labelled as Phospholipase C gamma 1.</p> <p>Reproducibility is key to advancing scientific discovery and accelerating scientists' next breakthrough.</p> <p>Abcam is leading the way with our range of recombinant antibodies, knockout-validated antibodies and knockout cell lines, all of which support improved reproducibility.</p> <p>We are also planning to innovate the way in which we present recommended applications and species on our product datasheets, so that only applications & species that have been tested in our own labs, our suppliers or by selected trusted collaborators are covered by our Abpromise™ guarantee.</p> <p>In preparation for this, we have started to update the applications & species that this product is Abpromise guaranteed for.</p> <p>We are also updating the applications & species that this product has been “predicted to work with,” however this information is not covered by our Abpromise guarantee.</p> <p>Applications & species from publications and Abreviews that have not been tested in our own labs or in those of our suppliers are not covered by the Abpromise guarantee.</p> <p>Please check that this product meets your needs before purchasing. If you have any questions, special requirements or concerns, please send us an inquiry and/or contact our Support team ahead of purchase. Recommended alternatives for this product can be found below, as well as customer reviews and Q&As.</p>

Properties

Form	Liquid
Storage instructions	Shipped at 4°C. Upon delivery aliquot and store at -20°C. Avoid freeze / thaw cycles.
Storage buffer	pH: 7.40 Preservative: 0.02% Sodium azide Constituents: 50% Glycerol (glycerin, glycerine), 0.87% Sodium chloride, PBS Without Mg ⁺² and Ca ⁺²
Purity	Immunogen affinity purified
Purification notes	The antibody was affinity-purified from rabbit antiserum by affinity-chromatography using epitope-specific immunogen.
Clonality	Polyclonal
Isotype	IgG

Applications

Our [Abpromise guarantee](#) covers the use of **ab52200** in the following tested applications.

The application notes include recommended starting dilutions; optimal dilutions/concentrations should be determined by the end user.

Application	Abreviews	Notes
WB		1/500 - 1/1000. Detects a band of approximately 149 kDa (predicted molecular weight: 149 kDa).
IHC-P		Use at an assay dependent concentration.
ELISA		1/10000.

Target

Function	Plays a role in actin reorganization and cell migration. The production of the second messenger molecules diacylglycerol (DAG) and inositol 1,4,5-trisphosphate (IP3) is mediated by activated phosphatidylinositol-specific phospholipase C enzymes. Major substrate for heparin-binding growth factor 1 (acidic fibroblast growth factor)-activated tyrosine kinase.
Sequence similarities	Contains 1 C2 domain. Contains 1 EF-hand domain. Contains 2 PH domains. Contains 1 PI-PLC X-box domain. Contains 1 PI-PLC Y-box domain. Contains 2 SH2 domains. Contains 1 SH3 domain.
Domain	The SH3 domain mediates interaction with CLNK (By similarity). The SH3 domain also mediates interaction with RALGPS1.
Post-translational modifications	The receptor-mediated activation of PLC-gamma-1 and PLC-gamma-2 involves their phosphorylation by tyrosine kinases in response to ligation of a variety of growth factor receptors

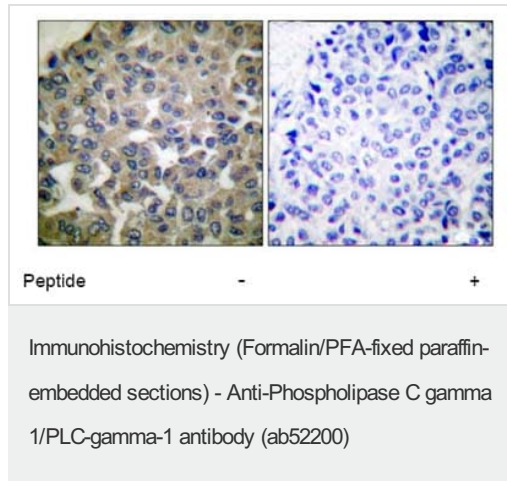
and immune system receptors. May be dephosphorylated by PTPRJ.

Ubiquitinated by CBLB in activated T-cells.

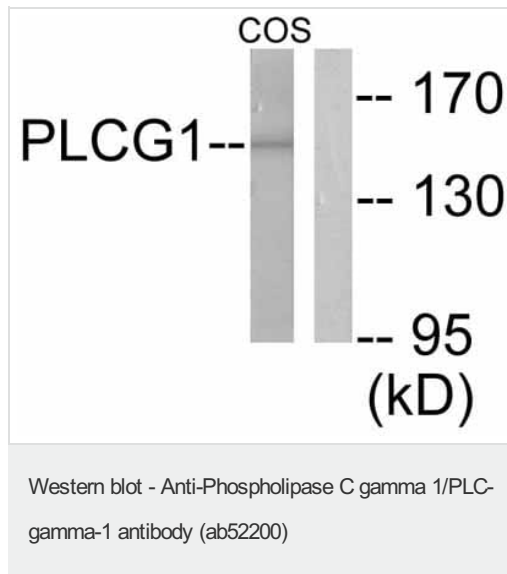
Cellular localization

Cell projection > lamellipodium. Cell projection > ruffle. Rapidly redistributed to ruffles and lamellipodia structures in response to epidermal growth factor (EGF) treatment.

Images



Paraffin-embedded human breast carcinoma tissue stained for Phospholipase C gamma 1/PLC-gamma-1, using ab52200 (1/100). The right hand panel represents a negative control where ab52200 was pre-incubated with the immunizing (blocking) peptide.



All lanes : Anti-Phospholipase C gamma 1/PLC-gamma-1 antibody (ab52200) at 1/500 dilution

Lane 1 : Extracts from COS7 cells treated with EGF (200ng/ml, 30min).

Lane 2 : Extracts from COS7 cells treated with EGF (200ng/ml, 30min). For this panel, ab52200 was pre-incubated with the immunizing (blocking) peptide.

Predicted band size: 149 kDa

Observed band size: 149 kDa

Please note: All products are "FOR RESEARCH USE ONLY. NOT FOR USE IN DIAGNOSTIC PROCEDURES"

Our Abpromise to you: Quality guaranteed and expert technical support

- Replacement or refund for products not performing as stated on the datasheet
- Valid for 12 months from date of delivery
- Response to your inquiry within 24 hours
- We provide support in Chinese, English, French, German, Japanese and Spanish
- Extensive multi-media technical resources to help you
- We investigate all quality concerns to ensure our products perform to the highest standards

If the product does not perform as described on this datasheet, we will offer a refund or replacement. For full details of the Abpromise, please visit <https://www.abcam.com/abpromise> or contact our technical team.

Terms and conditions

- Guarantee only valid for products bought direct from Abcam or one of our authorized distributors