

## Product datasheet

# Anti-Phosphoserine antibody (HRP) ab9334

9 References 1 Image

### Overview

---

<b>Product name</b>	Anti-Phosphoserine antibody (HRP)
<b>Description</b>	Rabbit polyclonal to Phosphoserine (HRP)
<b>Host species</b>	Rabbit
<b>Conjugation</b>	HRP
<b>Specificity</b>	Specifically recognizes both free-phosphoserine, serine-phosphorylated peptide and proteins. Does not cross-react with ATP, phosphotyrosine, peptidyl phosphothreonine and serine. Has slight cross-reactivity with free phosphothreonine. Readily reacts to known phosphoproteins such as phosvitin and alpha casein.
<b>Tested applications</b>	<b>Suitable for:</b> WB, ELISA
<b>Species reactivity</b>	<b>Reacts with:</b> Species independent
<b>Immunogen</b>	BSA and KLH-phosphoserine conjugates.
<b>Positive control</b>	Use Mouse brain extract for Western Blotting or synthetic phosphopeptide or phosvitin for ELISA.
<b>General notes</b>	<p>Reproducibility is key to advancing scientific discovery and accelerating scientists' next breakthrough.</p> <p>Abcam is leading the way with our range of recombinant antibodies, knockout-validated antibodies and knockout cell lines, all of which support improved reproducibility.</p> <p>We are also planning to innovate the way in which we present recommended applications and species on our product datasheets, so that only applications &amp; species that have been tested in our own labs, our suppliers or by selected trusted collaborators are covered by our Abpromise™ guarantee.</p> <p>In preparation for this, we have started to update the applications &amp; species that this product is Abpromise guaranteed for.</p> <p>We are also updating the applications &amp; species that this product has been “predicted to work with,” however this information is not covered by our Abpromise guarantee.</p> <p>Applications &amp; species from publications and Abreviews that have not been tested in our own labs or in those of our suppliers are not covered by the Abpromise guarantee.</p> <p>Please check that this product meets your needs before purchasing. If you have any questions, special requirements or concerns, please send us an inquiry and/or contact our Support team ahead of purchase. Recommended alternatives for this product can be found below, as well as customer reviews and Q&amp;As.</p>

## Properties

---

<b>Form</b>	Liquid
<b>Storage instructions</b>	Shipped at 4°C. Store at +4°C.
<b>Storage buffer</b>	pH: 6.00 Constituent: Tris buffered saline
<b>Purity</b>	Immunogen affinity purified
<b>Purification notes</b>	Immunoaffinity chromatography with phosphoserine-agarose.
<b>Clonality</b>	Polyclonal
<b>Isotype</b>	IgG

## Applications

---

Our [Abpromise guarantee](#) covers the use of **ab9334** in the following tested applications.

The application notes include recommended starting dilutions; optimal dilutions/concentrations should be determined by the end user.

Application	Abreviews	Notes
WB		Use a concentration of 2 µg/ml. To block use 3%BSA with 0.1% gelatin (do not use milk). We recommend that the antibody solution should contain 0.5% BSA to prevent non-specific binding.
ELISA		Use a concentration of 1 µg/ml.

## Target

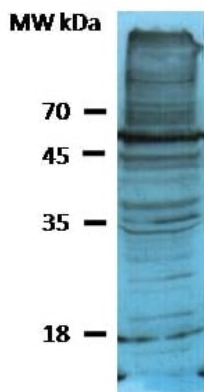
---

### Relevance

Changes in the serine/threonine phosphorylation state of a protein in response to various external stimuli can have profound effects on cellular signal transduction, apoptosis and carcinogenesis. The reagents, including phosphorylated protein/peptides, antibodies against the phosphospecific amino acid, are important tools to explore the activation of serine, threonine or tyrosine containing proteins. An aberrant protein phosphorylation is a hallmark of human disease, and the enzymes, particularly protein kinases, which control protein phosphorylation are recognized as a major new drug target family.

## Images

---



Western blot - Anti-Phosphoserine antibody (HRP)  
(ab9334)

Western blotting of mouse brain extract with ab9334 at a 1/200 dilution on a 12% SDS gel. 50 µg protein loaded in each lane. Antibody incubated for 2 hours incubation at room temperature.

**Please note:** All products are "FOR RESEARCH USE ONLY. NOT FOR USE IN DIAGNOSTIC PROCEDURES"

### Our Abpromise to you: Quality guaranteed and expert technical support

---

- Replacement or refund for products not performing as stated on the datasheet
- Valid for 12 months from date of delivery
- Response to your inquiry within 24 hours
- We provide support in Chinese, English, French, German, Japanese and Spanish
- Extensive multi-media technical resources to help you
- We investigate all quality concerns to ensure our products perform to the highest standards

If the product does not perform as described on this datasheet, we will offer a refund or replacement. For full details of the Abpromise, please visit <https://www.abcam.com/abpromise> or contact our technical team.

### Terms and conditions

---

- Guarantee only valid for products bought direct from Abcam or one of our authorized distributors