

Product datasheet

Anti-PI3 Kinase p110 beta antibody ab232951

8 Images

Overview

| | |
|----------------------------|--|
| Product name | Anti-PI3 Kinase p110 beta antibody |
| Description | Rabbit polyclonal to PI3 Kinase p110 beta |
| Host species | Rabbit |
| Tested applications | Suitable for: ICC/IF, WB, IHC-P |
| Species reactivity | Reacts with: Human Predicted to work with: Mouse, Rat |
| Immunogen | Recombinant fragment (His-tag) corresponding to Human PI3 Kinase p110 beta aa 321-507. (Expressed in E.coli). Sequence: RIISHVWENNNPFQMLVKGNKLNTEETVKVHVRAGLFH GTELLCKTIVS SEVSGKNDHMNEPLEFDINICDLPRMARLCFAVYAVL DKVKTKKSTKI NPSKYQTIKAGKVHYPVAWVNTMVDFKQQLRTGDII LHSWSSFPDELE EMLNPMGTVQTNPYTENATALHVKFPENKKQPYYYPP Database link: P42338 <div style="text-align: right;"> Run BLAST with Run BLAST with </div> |
| Positive control | IHC-P: Human cerebrum, liver, kidney, breast cancer and prostate cancer tissues. WB: HeLa, HepG2, Jurkat and K562 cell lysates; Recombinant human PI3 Kinase p110 beta protein. ICC/IF: HeLa cells. |

Properties

| | |
|-----------------------------|---|
| Form | Liquid |
| Storage instructions | Shipped at 4°C. Store at +4°C short term (1-2 weeks). Upon delivery aliquot. Store at -20°C long term. Avoid freeze / thaw cycle. |
| Storage buffer | pH: 7.40 Preservative: 0.02% Sodium azide Constituents: PBS, 50% Glycerol |
| Purity | Immunogen affinity purified |

| | |
|---------------------------|--|
| Purification notes | ab232951 was purified by antigen-specific affinity chromatography followed by Protein A affinity chromatography. |
| Clonality | Polyclonal |
| Isotype | IgG |

Applications

Our [Abpromise guarantee](#) covers the use of **ab232951** in the following tested applications.

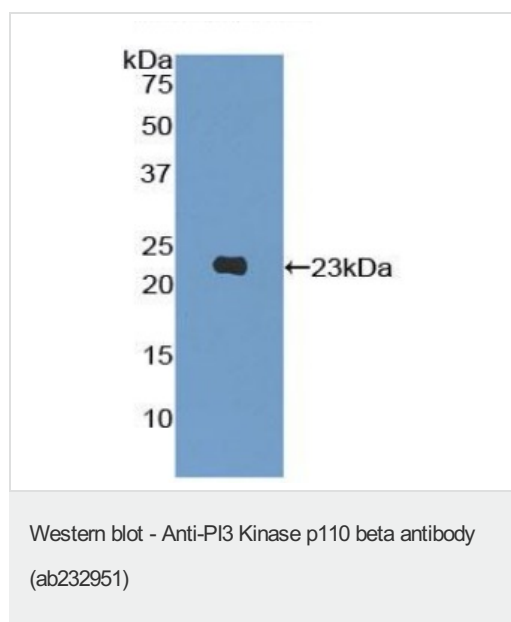
The application notes include recommended starting dilutions; optimal dilutions/concentrations should be determined by the end user.

| Application | Abreviews | Notes |
|-------------|-----------|--|
| ICC/IF | | Use a concentration of 5 - 20 µg/ml. |
| WB | | Use a concentration of 0.5 - 2 µg/ml. Predicted molecular weight: 123 kDa. |
| IHC-P | | Use a concentration of 5 - 20 µg/ml. |

Target

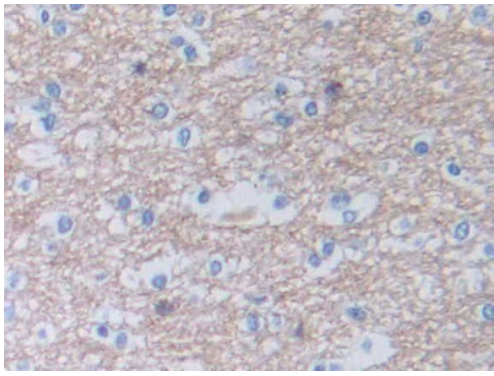
| | |
|------------------------------|--|
| Function | Phosphorylates PtdIns, PtdIns4P and PtdIns(4,5)P2 with a preference for PtdIns(4,5)P2. |
| Tissue specificity | Expressed ubiquitously. |
| Pathway | Phospholipid metabolism; phosphatidylinositol phosphate biosynthesis. |
| Sequence similarities | Belongs to the PI3/PI4-kinase family. Contains 1 PI3K/PI4K domain. |

Images



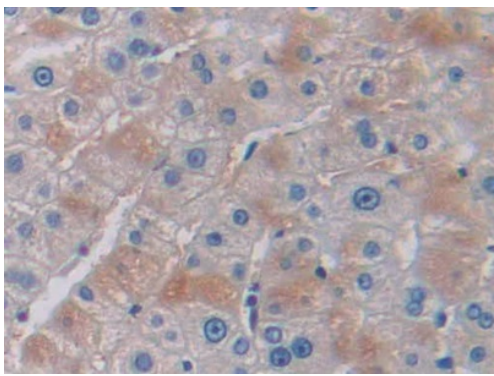
Anti-PI3 Kinase p110 beta antibody (ab232951) at 2 µg/ml +
Recombinant human PI3 Kinase p110 beta protein

Predicted band size: 123 kDa



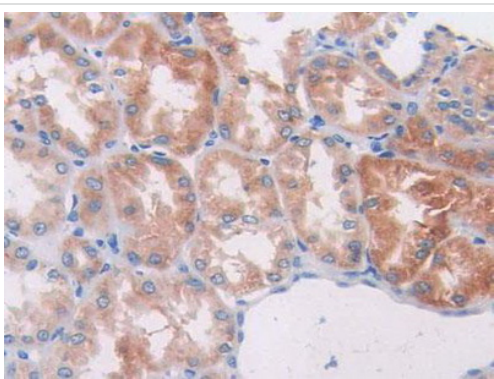
Immunohistochemistry (Formalin/PFA-fixed paraffin-embedded sections) - Anti-PI3 Kinase p110 beta antibody (ab232951)

Paraffin-embedded human cerebrum tissue stained for PI3 Kinase p110 beta antibody using ab232951 at 20 µg/ml in immunohistochemical analysis. DAB staining.



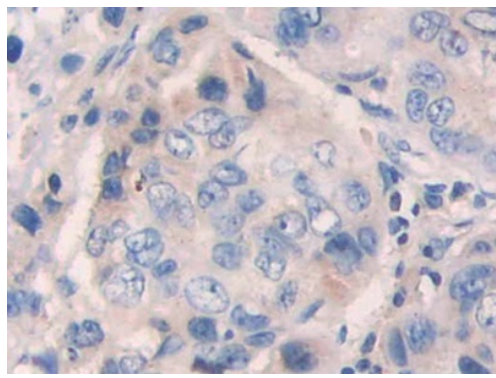
Immunohistochemistry (Formalin/PFA-fixed paraffin-embedded sections) - Anti-PI3 Kinase p110 beta antibody (ab232951)

Paraffin-embedded human liver tissue stained for PI3 Kinase p110 beta antibody using ab232951 at 20 µg/ml in immunohistochemical analysis. DAB staining.



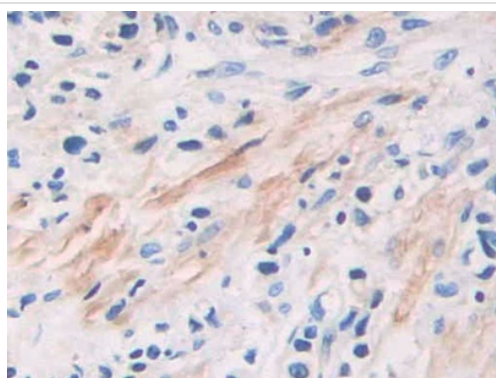
Immunohistochemistry (Formalin/PFA-fixed paraffin-embedded sections) - Anti-PI3 Kinase p110 beta antibody (ab232951)

Paraffin-embedded human kidney tissue stained for PI3 Kinase p110 beta antibody using ab232951 at 20 µg/ml in immunohistochemical analysis. DAB staining.



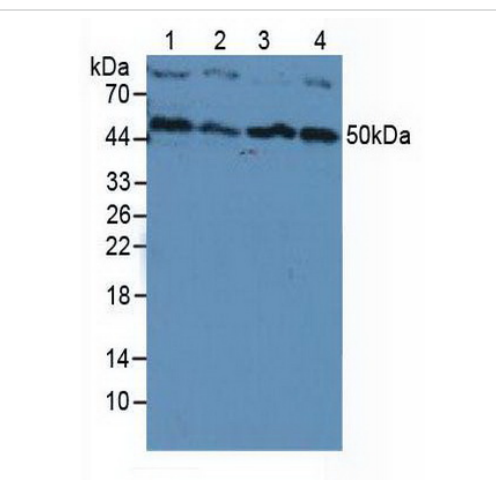
Immunohistochemistry (Formalin/PFA-fixed paraffin-embedded sections) - Anti-PI3 Kinase p110 beta antibody (ab232951)

Paraffin-embedded human breast cancer tissue stained for PI3 Kinase p110 beta antibody using ab232951 at 20 µg/ml in immunohistochemical analysis. DAB staining.



Immunohistochemistry (Formalin/PFA-fixed paraffin-embedded sections) - Anti-PI3 Kinase p110 beta antibody (ab232951)

Paraffin-embedded human prostate cancer tissue stained for PI3 Kinase p110 beta antibody using ab232951 at 20 µg/ml in immunohistochemical analysis. DAB staining.



Western blot - Anti-PI3 Kinase p110 beta antibody (ab232951)

All lanes : Anti-PI3 Kinase p110 beta antibody (ab232951) at 2 µg/ml

Lane 1 : HeLa (human epithelial cell line from cervix adenocarcinoma) cell lysate

Lane 2 : HepG2 (human liver hepatocellular carcinoma cell line) cell lysate

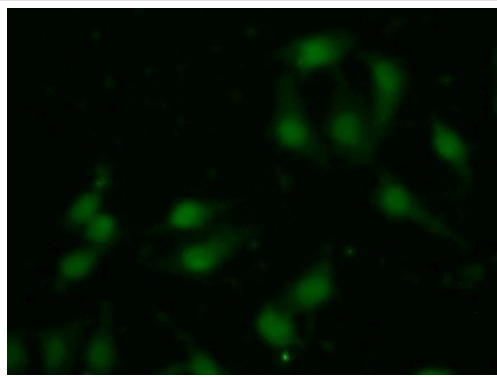
Lane 3 : Jurkat (human T cell leukemia cell line from peripheral blood) cell lysate

Lane 4 : K562 (human chronic myelogenous leukemia cell line from bone marrow) cell lysate

Secondary

All lanes : HRP-Linked Guinea pig Anti-Rabbit at 1/2000 dilution

Predicted band size: 123 kDa



HeLa (human epithelial cell line from cervix adenocarcinoma) cells labelling PI3 Kinase p110 beta using ab232951 at 20µg/mL in ICC/IF. FITC staining.

Immunocytochemistry/ Immunofluorescence - Anti-PI3 Kinase p110 beta antibody (ab232951)

Please note: All products are "FOR RESEARCH USE ONLY. NOT FOR USE IN DIAGNOSTIC PROCEDURES"

Our Abpromise to you: Quality guaranteed and expert technical support

- Replacement or refund for products not performing as stated on the datasheet
- Valid for 12 months from date of delivery
- Response to your inquiry within 24 hours
- We provide support in Chinese, English, French, German, Japanese and Spanish
- Extensive multi-media technical resources to help you
- We investigate all quality concerns to ensure our products perform to the highest standards

If the product does not perform as described on this datasheet, we will offer a refund or replacement. For full details of the Abpromise, please visit <https://www.abcam.com/abpromise> or contact our technical team.

Terms and conditions

- Guarantee only valid for products bought direct from Abcam or one of our authorized distributors