


Product datasheet

Anti-PIM3 antibody - C-terminal ab198842

1 References 2 Images

Overview

Product name	Anti-PIM3 antibody - C-terminal
Description	Rabbit Polyclonal to PIM3 - C-terminal
Host species	Rabbit
Tested applications	Suitable for: WB, IHC-P
Species reactivity	Reacts with: Mouse, Human Predicted to work with: Rat 
Immunogen	Synthetic peptide within Human PIM3 (C terminal). The exact sequence is proprietary. Database link: Q86V86
Positive control	Mouse skeletal muscle tissue lysate, Human brain tissue
General notes	<p>The Life Science industry has been in the grips of a reproducibility crisis for a number of years. Abcam is leading the way in addressing this with our range of recombinant monoclonal antibodies and knockout edited cell lines for gold-standard validation. Please check that this product meets your needs before purchasing.</p> <p>If you have any questions, special requirements or concerns, please send us an inquiry and/or contact our Support team ahead of purchase. Recommended alternatives for this product can be found below, along with publications, customer reviews and Q&As</p>

Properties

Form	Liquid
Storage instructions	Shipped at 4°C. Store at +4°C short term (1-2 weeks). Upon delivery aliquot. Store at -20°C long term. Avoid freeze / thaw cycle.
Storage buffer	pH: 7.4 Preservative: 0.05% Sodium azide Constituents: 49% PBS, 50% Glycerol (glycerin, glycerine)
Purity	Immunogen affinity purified
Clonality	Polyclonal
Isotype	IgG

Applications

The Abpromise guarantee

Our [Abpromise guarantee](#) covers the use of ab198842 in the following tested applications.

The application notes include recommended starting dilutions; optimal dilutions/concentrations should be determined by the end user.

Application	Abreviews	Notes
WB		1/200 - 1/1000. Predicted molecular weight: 36 kDa.
IHC-P		1/25 - 1/100.

Target

Function

Able to phosphorylate CDKN1B in vitro. Involved in cell cycle progression and suppression of apoptosis. Implicated in proliferation of human hepatoma cell lines.

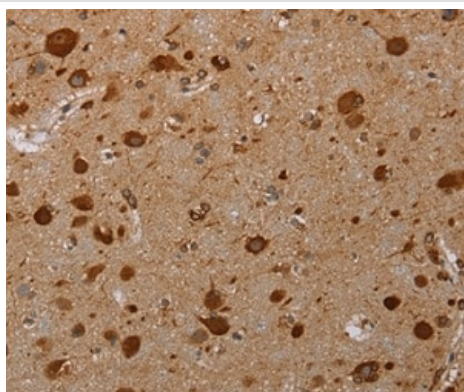
Tissue specificity

Widely expressed. No expression in colon, thymus, and small intestine. Expressed in human hepatoma cell lines but not in normal liver tissues. Expressed in colon cancer samples, particularly at the less advanced stages of cancer development.

Sequence similarities

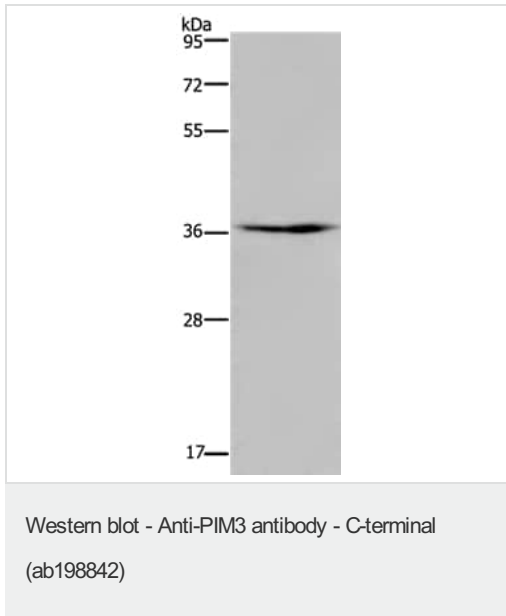
Belongs to the protein kinase superfamily. CAMK Ser/Thr protein kinase family. PIM subfamily. Contains 1 protein kinase domain.

Images



Immunohistochemical analysis of paraffin-embedded Human brain tissue labeling PIM3 using ab198842 at 1/20

Immunohistochemistry (Formalin/PFA-fixed paraffin-embedded sections) - Anti-PIM3 antibody - C-terminal (ab198842)



Anti-PIM3 antibody - C-terminal (ab198842) at 1/250 dilution +
Mouse skeletal muscle tissue lysate at 40 µg

Predicted band size: 36 kDa

Exposure time: 5 minutes

Please note: All products are "FOR RESEARCH USE ONLY. NOT FOR USE IN DIAGNOSTIC PROCEDURES"

Our Abpromise to you: Quality guaranteed and expert technical support

- Replacement or refund for products not performing as stated on the datasheet
- Valid for 12 months from date of delivery
- Response to your inquiry within 24 hours
- We provide support in Chinese, English, French, German, Japanese and Spanish
- Extensive multi-media technical resources to help you
- We investigate all quality concerns to ensure our products perform to the highest standards

If the product does not perform as described on this datasheet, we will offer a refund or replacement. For full details of the Abpromise, please visit <https://www.abcam.com/abpromise> or contact our technical team.

Terms and conditions

- Guarantee only valid for products bought direct from Abcam or one of our authorized distributors