


Product datasheet

Anti-Pin1 antibody ab191271

2 Images

Overview

Product name	Anti-Pin1 antibody
Description	Rabbit polyclonal to Pin1
Host species	Rabbit
Tested applications	Suitable for: IHC-P, IP, WB
Species reactivity	Reacts with: Human Predicted to work with: Mouse, Rat, Cow, Dog, Monkey 
Immunogen	Synthetic peptide corresponding to Human Pin1 (internal sequence). Database link: Q13526
Positive control	Human testis tissue; HeLa cell lysate

Properties

Form	Liquid
Storage instructions	Shipped at 4°C. Store at +4°C short term (1-2 weeks). Upon delivery aliquot. Store at -20°C long term. Avoid freeze / thaw cycle.
Storage buffer	pH: 7.2 Preservative: 0.01% Sodium azide Constituents: 0.42% Potassium phosphate, 0.87% Sodium chloride
Purity	Immunogen affinity purified
Clonality	Polyclonal
Isotype	IgG

Applications

Our [Abpromise guarantee](#) covers the use of **ab191271** in the following tested applications.

The application notes include recommended starting dilutions; optimal dilutions/concentrations should be determined by the end user.

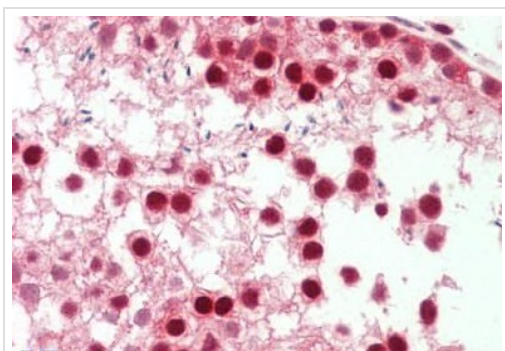
Application	Abreviews	Notes
IHC-P		Use a concentration of 5 µg/ml.

Application	Abreviews	Notes
IP		1/100.
WB		1/500 - 1/3000. Predicted molecular weight: 18 kDa.

Target

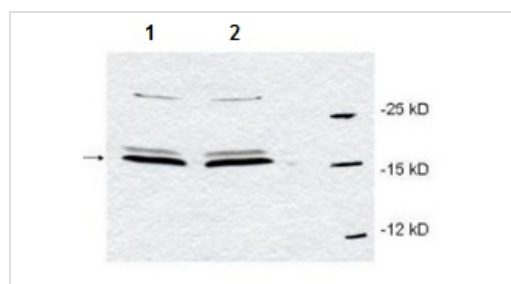
Function	Essential PPlase that regulates mitosis presumably by interacting with NIMA and attenuating its mitosis-promoting activity. Displays a preference for an acidic residue N-terminal to the isomerized proline bond. Catalyzing pSer/Thr-Pro cis/trans isomerizations.
Sequence similarities	Contains 1 PpiC domain. Contains 1 WW domain.
Domain	The WW domain is required for the interaction with STIL and KIF20B.
Post-translational modifications	Phosphorylated upon DNA damage, probably by ATM or ATR.
Cellular localization	Nucleus.

Images



Immunohistochemical analysis of paraffin-embedded, formalin-fixed Human testis tissue labeling Pin1 using ab191271 at 5 µg/ml.

Immunohistochemistry (Formalin/PFA-fixed paraffin-embedded sections) - Anti-Pin1 antibody (ab191271)



All lanes : Anti-Pin1 antibody (ab191271) at 1/700 dilution

All lanes : HeLa cell lysate

Secondary

All lanes : HRP Goat-anti-Rabbit IgG at 1/5000 dilution

Western blot - Anti-Pin1 antibody (ab191271)

Developed using the ECL technique.

Predicted band size: 18 kDa

Exposure time: 15 seconds

15% SDS Page. 15 seconds exposure time.

Please note: All products are "FOR RESEARCH USE ONLY. NOT FOR USE IN DIAGNOSTIC PROCEDURES"

Our Abpromise to you: Quality guaranteed and expert technical support

- Replacement or refund for products not performing as stated on the datasheet
- Valid for 12 months from date of delivery
- Response to your inquiry within 24 hours

- We provide support in Chinese, English, French, German, Japanese and Spanish
- Extensive multi-media technical resources to help you
- We investigate all quality concerns to ensure our products perform to the highest standards

If the product does not perform as described on this datasheet, we will offer a refund or replacement. For full details of the Abpromise, please visit <https://www.abcam.com/abpromise> or contact our technical team.

Terms and conditions

- Guarantee only valid for products bought direct from Abcam or one of our authorized distributors