




Product datasheet

Anti-PINX1/LPTS antibody ab217960

1 Image

Overview

<b>Product name</b>	Anti-PINX1/LPTS antibody
<b>Description</b>	Rabbit polyclonal to PINX1/LPTS
<b>Host species</b>	Rabbit
<b>Tested applications</b>	<b>Suitable for:</b> IHC-P
<b>Species reactivity</b>	<b>Reacts with:</b> Mouse <b>Predicted to work with:</b> Rat, Human 
<b>Immunogen</b>	Synthetic peptide within Human PINX1/LPTS aa 85-133 conjugated to keyhole limpet haemocyanin. The exact sequence is proprietary. Sequence:  NQLLAELNTCHGQETTDSSDKKEKKSFSLEEKSKISK NRVHYMKFTKGK  Database link: <a href="#">Q96BK5</a>   <a href="#">Run BLAST with</a>  <a href="#">Run BLAST with</a>
<b>Positive control</b>	IHC-P; Mouse kidney tissue.
<b>General notes</b>	This product was previously labelled as PINX1

Properties

<b>Form</b>	Liquid
<b>Storage instructions</b>	Shipped at 4°C. Store at +4°C short term (1-2 weeks). Upon delivery aliquot. Store at -20°C long term. Avoid freeze / thaw cycle.
<b>Storage buffer</b>	Preservative: 0.09% Sodium azide Constituents: 1% BSA, 50% Glycerol
<b>Purity</b>	Protein A purified
<b>Clonality</b>	Polyclonal
<b>Isotype</b>	IgG

Applications

## Applications

Our [Abpromise guarantee](#) covers the use of **ab217960** in the following tested applications.

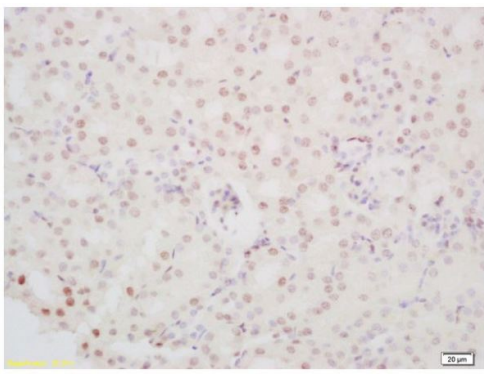
The application notes include recommended starting dilutions; optimal dilutions/concentrations should be determined by the end user.

Application	Abreviews	Notes
IHC-P		1/100 - 1/500.

## Target

<b>Function</b>	Microtubule-binding protein essential for faithful chromosome segregation. Mediates TRF1 and TERT accumulation in nucleolus and enhances TRF1 binding to telomeres. Inhibits telomerase activity. May inhibit cell proliferation and act as tumor suppressor.
<b>Tissue specificity</b>	Ubiquitous; expressed at low levels. Not detectable in a number of hepatocarcinoma cell lines.
<b>Sequence similarities</b>	Belongs to the PINX1 family. Contains 1 G-patch domain.
<b>Domain</b>	The TID (telomerase inhibiting domain) domain is sufficient to bind TERT and inhibit its activity. The TBM domain mediates interaction with TERF1.
<b>Cellular localization</b>	Nucleus. Nucleus > nucleolus. Chromosome > telomere. Chromosome > centromere > kinetochore. Localizes in nucleoli, at telomere speckles and to the outer plate of kinetochores. Localization to the kinetochore is mediated by its central region and depends on NDC80 and CENPE.

## Images



Immunohistochemical analysis of formalin-fixed, paraffin-embedded Mouse kidney tissue labeling PINX1/LPTS with ab217960 at 1/200 dilution followed by conjugation to the secondary antibody and DAB staining.

Immunohistochemistry (Formalin/PFA-fixed paraffin-embedded sections) - Anti-PINX1/LPTS antibody (ab217960)

**Please note:** All products are "FOR RESEARCH USE ONLY. NOT FOR USE IN DIAGNOSTIC PROCEDURES"

**Our Abpromise to you: Quality guaranteed and expert technical support**

- Replacement or refund for products not performing as stated on the datasheet
- Valid for 12 months from date of delivery
- Response to your inquiry within 24 hours
  
- We provide support in Chinese, English, French, German, Japanese and Spanish
- Extensive multi-media technical resources to help you
- We investigate all quality concerns to ensure our products perform to the highest standards

If the product does not perform as described on this datasheet, we will offer a refund or replacement. For full details of the Abpromise, please visit <https://www.abcam.com/abpromise> or contact our technical team.

### **Terms and conditions**

---

- Guarantee only valid for products bought direct from Abcam or one of our authorized distributors