


Product datasheet

Anti-PIP5K1C antibody ab228620

2 Images

Overview

Product name	Anti-PIP5K1C antibody
Description	Rabbit polyclonal to PIP5K1C
Host species	Rabbit
Tested applications	Suitable for: WB
Species reactivity	Reacts with: Mouse, Human Predicted to work with: Rat, Chicken, Cow 
Immunogen	Recombinant fragment within Human PIP5K1C (internal sequence). The exact sequence is proprietary. Database link: O60331
Positive control	WB: A431, NCI-H1299 and HeLa S3 whole cell lysates; Mouse brain lysate.
General notes	This product was previously labelled as PIP5K1 gamma

Reproducibility is key to advancing scientific discovery and accelerating scientists' next breakthrough.

Abcam is leading the way with our range of recombinant antibodies, knockout-validated antibodies and knockout cell lines, all of which support improved reproducibility.

We are also planning to innovate the way in which we present recommended applications and species on our product datasheets, so that only applications & species that have been tested in our own labs, our suppliers or by selected trusted collaborators are covered by our Abpromise™ guarantee.

In preparation for this, we have started to update the applications & species that this product is Abpromise guaranteed for.

We are also updating the applications & species that this product has been “predicted to work with,” however this information is not covered by our Abpromise guarantee.

Applications & species from publications and Abreviews that have not been tested in our own labs or in those of our suppliers are not covered by the Abpromise guarantee.

Please check that this product meets your needs before purchasing. If you have any questions, special requirements or concerns, please send us an inquiry and/or contact our Support team ahead of purchase. Recommended alternatives for this product can be found below, as well as customer reviews and Q&As.

Properties

Form	Liquid
Storage instructions	Shipped at 4°C. Store at +4°C short term (1-2 weeks). Upon delivery aliquot. Store at -20°C long term. Avoid freeze / thaw cycle.
Storage buffer	pH: 7.00 Preservative: 0.01% Thimerosal (merthiolate) Constituents: 1.21% Tris, 0.75% Glycine, 10% Glycerol (glycerin, glycerine)
Purity	Immunogen affinity purified
Clonality	Polyclonal
Isotype	IgG

Applications

Our [Abpromise guarantee](#) covers the use of **ab228620** in the following tested applications.

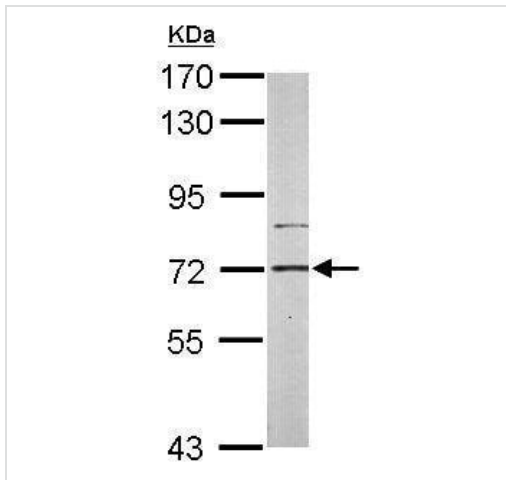
The application notes include recommended starting dilutions; optimal dilutions/concentrations should be determined by the end user.

Application	Abreviews	Notes
WB		1/500 - 1/3000. Predicted molecular weight: 73 kDa.

Target

Function	Plays a role in membrane ruffling and assembly of clathrin-coated pits at the synapse. Mediates RAC1-dependent reorganization of actin filaments (By similarity). Participates in the biosynthesis of phosphatidylinositol-4,5-bisphosphate.
Involvement in disease	Defects in PIP5K1C are the cause of lethal congenital contracture syndrome type 3 (LCCS3) [MIM:611369]; also known as multiple contractural syndrome Israeli Bedouin type B. LCCS is an autosomal recessive disorder characterized by early fetal hydrops and akinesia, the Pena-Shokeir phenotype, specific neuropathology with degeneration of anterior horn neurons and extreme skeletal muscle atrophy. LCCS3 patients present at birth with severe multiple joint contractures with severe muscle wasting and atrophy, mainly in the legs. LCCS3 can be distinguished from the original LCCS by the absence of hydrops, fractures, and multiple pterygia.
Sequence similarities	Contains 1 PIPK domain.
Cellular localization	Cell membrane. Cytoplasmic, associated with the plasma membrane. Detected in focal adhesion plaques, membrane ruffles and plasma membrane invaginations.

Images

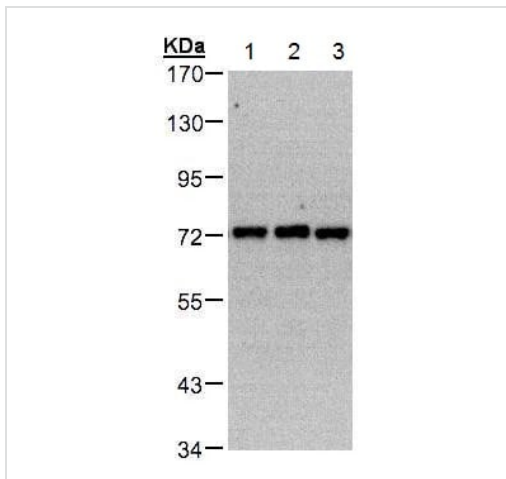


Western blot - Anti-PIP5K1C antibody (ab228620)

Anti-PIP5K1C antibody (ab228620) at 1/1000 dilution + Mouse brain lysate at 50 µg

Predicted band size: 73 kDa

7.5% SDS-PAGE gel.



Western blot - Anti-PIP5K1C antibody (ab228620)

All lanes : Anti-PIP5K1C antibody (ab228620) at 1/500 dilution

Lane 1 : A431 (human epidermoid carcinoma cell line) whole cell lysate

Lane 2 : NCI-H1299 (human lung carcinoma cell line) whole cell lysate

Lane 3 : HeLa S3 whole cell lysate

Lysates/proteins at 30 µg per lane.

Predicted band size: 73 kDa

7.5% SDS-PAGE gel.

Please note: All products are "FOR RESEARCH USE ONLY. NOT FOR USE IN DIAGNOSTIC PROCEDURES"

Our Abpromise to you: Quality guaranteed and expert technical support

- Replacement or refund for products not performing as stated on the datasheet
- Valid for 12 months from date of delivery
- Response to your inquiry within 24 hours
- We provide support in Chinese, English, French, German, Japanese and Spanish

- Extensive multi-media technical resources to help you
- We investigate all quality concerns to ensure our products perform to the highest standards

If the product does not perform as described on this datasheet, we will offer a refund or replacement. For full details of the Abpromise, please visit <https://www.abcam.com/abpromise> or contact our technical team.

Terms and conditions

- Guarantee only valid for products bought direct from Abcam or one of our authorized distributors