


Product datasheet

Anti-Pit1 antibody [2C11] ab10623

3 References 1 Image

Overview

Product name	Anti-Pit1 antibody [2C11]
Description	Mouse monoclonal [2C11] to Pit1
Host species	Mouse
Tested applications	Suitable for: WB, ICC/IF, IHC-P
Species reactivity	Reacts with: Mouse Predicted to work with: Rat, Sheep, Cow, Human, Pig, Macaque monkey 
Immunogen	Fusion protein: SAAECLPASN HATNVMSTAT GLHYSVPSCH YGNQPSTYGV MAGSLTPCLYKFPDHTLSHG FPPLHQPLLA EDPAASEFKQ ELRRKSKLVEE PIDMDSPEIR ELEQFANEFK VRRIKL , corresponding to amino acids 30-146 of Rat Pit1. Run BLAST with Run BLAST with

Properties

Form	Liquid
Storage instructions	Shipped at 4°C. Upon delivery aliquot and store at -20°C or -80°C. Avoid repeated freeze / thaw cycles.
Storage buffer	Tissue culture media: 15% FBS, DMEN 4.5g/litre glucose and 10% NCTC 109. Additives: bovine insulin, oxaloacetic acid, glycine, L-glutamine and pen-strep.
Purity	Tissue culture supernatant
Clonality	Monoclonal
Clone number	2C11
Myeloma	NS1
Isotype	IgG1
Light chain type	kappa

Applications

Our [Abpromise guarantee](#) covers the use of **ab10623** in the following tested applications.

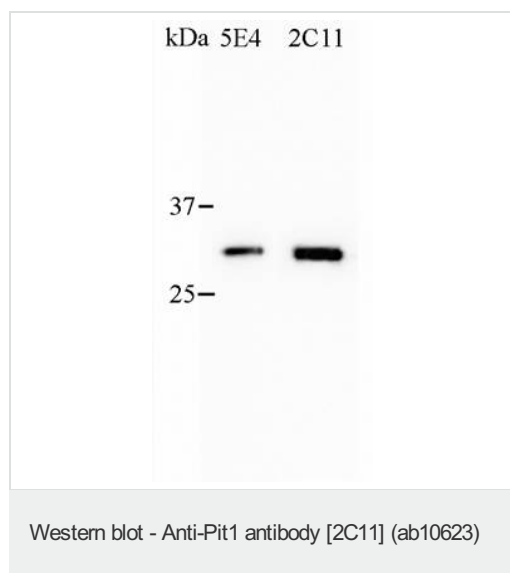
The application notes include recommended starting dilutions; optimal dilutions/concentrations should be determined by the end user.

Application	Abreviews	Notes
WB		1/50. Detects a band of approximately 31 kDa (predicted molecular weight: 33 kDa).
ICC/IF		Use at an assay dependent concentration.
IHC-P		Use at an assay dependent concentration. PubMed: 20807761

Target

Function	Transcription factor involved in the specification of the lactotrope, somatotrope, and thyrotrope phenotypes in the developing anterior pituitary. Activates growth hormone and prolactin genes. Specifically binds to the consensus sequence 5'-TAAAT-3'.
Involvement in disease	Defects in POU1F1 are the cause of pituitary hormone deficiency combined type 1 (CPHD1) [MIM:613038]. CPHD is characterized by impaired production of growth hormone (GH) and one or more of the other five anterior pituitary hormones.
Sequence similarities	Belongs to the POU transcription factor family. Class-1 subfamily. Contains 1 homeobox DNA-binding domain. Contains 1 POU-specific domain.
Cellular localization	Nucleus.

Images



At 1:40 dilution the western was very good on GH3 nuclear lysate which has an abundant expression of Pit1.

At 1:40 dilution the western was very good on GH3 nuclear lysate which has an abundant expression of Pit1.

Please note: All products are "FOR RESEARCH USE ONLY. NOT FOR USE IN DIAGNOSTIC PROCEDURES"

Our Abpromise to you: Quality guaranteed and expert technical support

- Replacement or refund for products not performing as stated on the datasheet
- Valid for 12 months from date of delivery
- Response to your inquiry within 24 hours

- We provide support in Chinese, English, French, German, Japanese and Spanish
- Extensive multi-media technical resources to help you
- We investigate all quality concerns to ensure our products perform to the highest standards

If the product does not perform as described on this datasheet, we will offer a refund or replacement. For full details of the Abpromise, please visit <https://www.abcam.com/abpromise> or contact our technical team.

Terms and conditions

- Guarantee only valid for products bought direct from Abcam or one of our authorized distributors