


Product datasheet

Anti-PITX2/RGS antibody ab98297

★☆☆☆☆ 1 Abreviews 2 References 2 Images

Overview

<b>Product name</b>	Anti-PITX2/RGS antibody
<b>Description</b>	Rabbit polyclonal to PITX2/RGS
<b>Host species</b>	Rabbit
<b>Tested applications</b>	<b>Suitable for:</b> ICC/IF, WB
<b>Species reactivity</b>	<b>Reacts with:</b> Human <b>Predicted to work with:</b> Mouse, Dog 
<b>Immunogen</b>	Synthetic peptide corresponding to Human PITX2/RGS aa 1-100 conjugated to keyhole limpet haemocyanin. (Peptide available as <a href="#">ab111328</a> )
<b>Positive control</b>	This antibody gave a positive signal in Human Heart Tissue Lysate.
<b>General notes</b>	This product was previously labelled as PITX2

Reproducibility is key to advancing scientific discovery and accelerating scientists' next breakthrough.

Abcam is leading the way with our range of recombinant antibodies, knockout-validated antibodies and knockout cell lines, all of which support improved reproducibility.

We are also planning to innovate the way in which we present recommended applications and species on our product datasheets, so that only applications & species that have been tested in our own labs, our suppliers or by selected trusted collaborators are covered by our Abpromise™ guarantee.

In preparation for this, we have started to update the applications & species that this product is Abpromise guaranteed for.

We are also updating the applications & species that this product has been “predicted to work with,” however this information is not covered by our Abpromise guarantee.

Applications & species from publications and Abreviews that have not been tested in our own labs or in those of our suppliers are not covered by the Abpromise guarantee.

Please check that this product meets your needs before purchasing. If you have any questions, special requirements or concerns, please send us an inquiry and/or contact our Support team ahead of purchase. Recommended alternatives for this product can be found below, as well as customer reviews and Q&As.

## Properties

---

<b>Form</b>	Liquid
<b>Storage instructions</b>	Shipped at 4°C. Store at +4°C short term (1-2 weeks). Upon delivery aliquot. Store at -20°C or -80°C. Avoid freeze / thaw cycle.
<b>Storage buffer</b>	pH: 7.40 Preservative: 0.02% Sodium azide Constituent: PBS  Batches of this product that have a concentration < 1mg/ml may have BSA added as a stabilising agent. If you would like information about the formulation of a specific lot, please contact our scientific support team who will be happy to help.
<b>Purity</b>	Immunogen affinity purified
<b>Clonality</b>	Polyclonal
<b>Isotype</b>	IgG

## Applications

---

Our [Abpromise guarantee](#) covers the use of **ab98297** in the following tested applications.

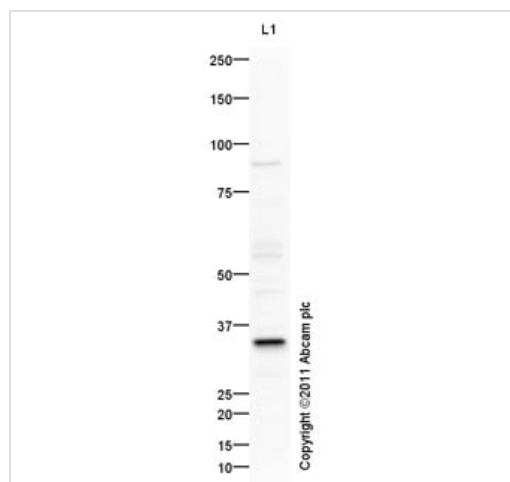
The application notes include recommended starting dilutions; optimal dilutions/concentrations should be determined by the end user.

Application	Abreviews	Notes
ICC/IF		Use a concentration of 1 µg/ml.
WB		Use a concentration of 1 µg/ml. Detects a band of approximately 35 kDa (predicted molecular weight: 35 kDa).

## Target

---

<b>Function</b>	May play an important role in development and maintenance of anterior structures. Isoform PTX2C is involved in left-right asymmetry the developing embryo.
<b>Involvement in disease</b>	Defects in PITX2 are the cause of Axenfeld-Rieger syndrome type 1 (RIEG1) [MIM:180500]; also known as Rieger syndrome type 1. RIEG1 is an autosomal dominant defect characterized by hypodontia (partial anodontia), anal stenosis, hypertelorism, mental deficiency, agenesis of the facial bones, with malformation of the anterior chamber of the eye. Defects in PITX2 are the cause of iridogoniodysgenesis type 2 (IRID2) [MIM:137600]; also known as iridogoniodysgenesis syndrome 2 (IGDS2). It is an autosomal dominant inherited disease. Defects in PITX2 are a cause of Peters anomaly (PAN) [MIM:604229]. It is a congenital defect of the anterior chamber of the eye. Defects in PITX2 are associated with ring dermoid of cornea (RDC) [MIM:180550]. RDC is an autosomal dominantly inherited syndrome characterized by bilateral annular limbal dermoids with corneal and conjunctival extension.
<b>Sequence similarities</b>	Belongs to the paired homeobox family. Bicoid subfamily. Contains 1 homeobox DNA-binding domain.
<b>Cellular localization</b>	Nucleus.



Western blot - Anti-PITX2/RGS antibody (ab98297)

Anti-PITX2/RGS antibody (ab98297) at 1 µg/ml + Human heart tissue lysate - total protein (ab29431) at 10 µg

### Secondary

Goat Anti-Rabbit IgG H&L (HRP) preadsorbed (ab97080) at 1/5000 dilution

Developed using the ECL technique.

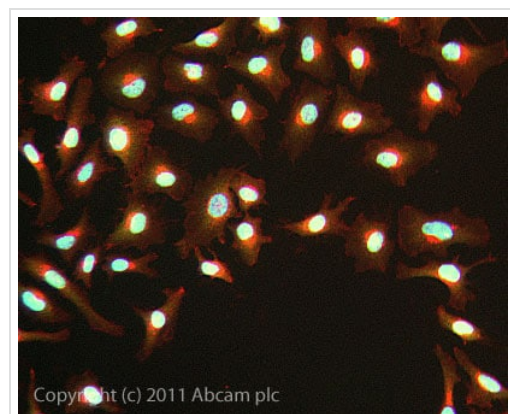
Performed under reducing conditions.

**Predicted band size:** 35 kDa

**Observed band size:** 35 kDa

**Additional bands at:** 55 kDa, 60 kDa, 85 kDa. We are unsure as to the identity of these extra bands.

**Exposure time:** 4 minutes



Immunocytochemistry/ Immunofluorescence - Anti-PITX2/RGS antibody (ab98297)

ICC/IF image of ab98297 stained HeLa cells. The cells were 100% methanol fixed (5 min) and then incubated in 1%BSA / 10% normal goat serum / 0.3M glycine in 0.1% PBS-Tween for 1h to permeabilise the cells and block non-specific protein-protein interactions. The cells were then incubated with the antibody ab98297 at 1 µg/ml overnight at +4°C. The secondary antibody (green) was DyLight® 488 goat anti- rabbit (ab96899) IgG (H+L) used at a 1/250 dilution for 1h. Alexa Fluor® 594 WGA was used to label plasma membranes (red) at a 1/200 dilution for 1h. DAPI was used to stain the cell nuclei (blue) at a concentration of 1.43µM. This antibody also gave a positive result in methanol fixed (100%, 5min) HepG2, HEK293, and MCF-7 cell lines at 1 µg/ml

**Please note:** All products are "FOR RESEARCH USE ONLY. NOT FOR USE IN DIAGNOSTIC PROCEDURES"

### Our Abpromise to you: Quality guaranteed and expert technical support

- Replacement or refund for products not performing as stated on the datasheet
- Valid for 12 months from date of delivery
- Response to your inquiry within 24 hours

- We provide support in Chinese, English, French, German, Japanese and Spanish
- Extensive multi-media technical resources to help you
- We investigate all quality concerns to ensure our products perform to the highest standards

If the product does not perform as described on this datasheet, we will offer a refund or replacement. For full details of the Abpromise, please visit <https://www.abcam.com/abpromise> or contact our technical team.

### **Terms and conditions**

---

- Guarantee only valid for products bought direct from Abcam or one of our authorized distributors