

Product datasheet

Anti-Piwi antibody ab5207

1 Abreviews 8 References 2 Images

Overview

Product name	Anti-Piwi antibody
Description	Rabbit polyclonal to Piwi
Host species	Rabbit
Tested applications	Suitable for: WB
Species reactivity	Reacts with: Drosophila melanogaster
Immunogen	Synthetic peptide. This information is proprietary to Abcam and/or its suppliers.
Positive control	This antibody gave a positive signal in Drosophila embryo nuclear extract
General notes	<p>The Life Science industry has been in the grips of a reproducibility crisis for a number of years. Abcam is leading the way in addressing this with our range of recombinant monoclonal antibodies and knockout edited cell lines for gold-standard validation. Please check that this product meets your needs before purchasing.</p> <p>If you have any questions, special requirements or concerns, please send us an inquiry and/or contact our Support team ahead of purchase. Recommended alternatives for this product can be found below, along with publications, customer reviews and Q&As</p>

Properties

Form	Liquid
Storage instructions	Shipped at 4°C. Store at +4°C short term (1-2 weeks). Upon delivery aliquot. Store at -20°C or -80°C. Avoid freeze / thaw cycle.
Storage buffer	<p>pH: 7.40</p> <p>Preservative: 0.02% Sodium azide</p> <p>Constituent: PBS</p> <p>Batches of this product that have a concentration < 1mg/ml may have BSA added as a stabilising agent. If you would like information about the formulation of a specific lot, please contact our scientific support team who will be happy to help.</p>
Purity	Immunogen affinity purified
Clonality	Polyclonal
Isotype	IgG

Applications

The Abpromise guarantee

Our [Abpromise guarantee](#) covers the use of ab5207 in the following tested applications.

The application notes include recommended starting dilutions; optimal dilutions/concentrations should be determined by the end user.

Application	Abreviews	Notes
WB		

Application notes

WB: 1/500. Detects a band of approximately 90 kDa (predicted molecular weight: 97 kDa). Can be blocked with [Piwi peptide \(ab14803\)](#).

Not yet tested in other applications.

Optimal dilutions/concentrations should be determined by the end user.

Target

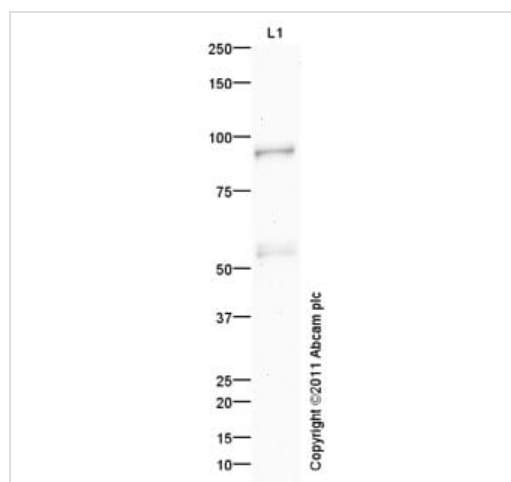
Relevance

Piwi mediates a somatic signaling mechanism required for the maintenance of germline stem cells to produce and maintain a daughter germline stem cell. It is not essential for the further differentiation of the committed daughter cell. Acts cell autonomously to promote germline stem cell division. It is expressed somatically in the ovariole terminal filament and epithelial sheath cells. Expressed in the germarium at low levels during oogenesis stages 1-6, at a lower level during stages 7-9, strongly at stage 10 and eventually accumulating in early embryos.

Cellular localization

Nuclear

Images



Western blot - Anti-Piwi antibody (ab5207)

Anti-Piwi antibody (ab5207) at 1 μ g/ml + Drosophila embryo nuclear extract (from melanogaster embryos 0-12Hr) at 20 μ g

Secondary

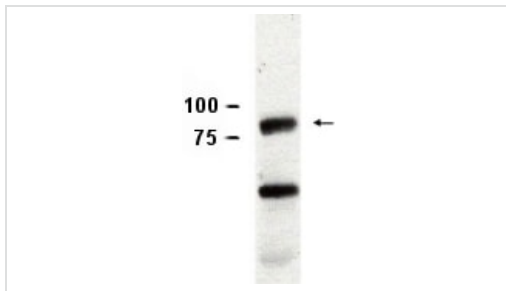
IRDye 680 Conjugated Goat Anti-Rabbit IgG (H+L) at 1/3000 dilution

Performed under reducing conditions.

Predicted band size: 97 kDa

Observed band size: 90 kDa

Additional bands at: 53 kDa. We are unsure as to the identity of these extra bands.



Western blot - Anti-Piwi antibody (ab5207)

This image is courtesy of Ahmet Denli

Drosophila embryo lysate, 8% TRIS SDS-PAGE.

The arrow indicates Piwi at a predicted MW of 90 kDa.

Pre-immune sera was used as a control and showed no equivalent band (data not shown).

Drosophila embryo lysate, 8% TRIS SDS-PAGE. The arrow indicates Piwi at a predicted MW of 90 kDa. Pre-immune sera was used as a control and showed no equivalent band (data not shown).

Ahmet Denli

Please note: All products are "FOR RESEARCH USE ONLY. NOT FOR USE IN DIAGNOSTIC PROCEDURES"

Our Abpromise to you: Quality guaranteed and expert technical support

- Replacement or refund for products not performing as stated on the datasheet
- Valid for 12 months from date of delivery
- Response to your inquiry within 24 hours
- We provide support in Chinese, English, French, German, Japanese and Spanish
- Extensive multi-media technical resources to help you
- We investigate all quality concerns to ensure our products perform to the highest standards

If the product does not perform as described on this datasheet, we will offer a refund or replacement. For full details of the Abpromise, please visit <https://www.abcam.com/abpromise> or contact our technical team.

Terms and conditions

- Guarantee only valid for products bought direct from Abcam or one of our authorized distributors